

**Chapter 29. Small Islands****Coordinating Lead Authors**

Leonard Nurse (Barbados), Roger McLean (Australia)

**Lead Authors**

John Agard (Trinidad and Tobago), Lino Pascal Briguglio (Malta), Rolph Payet (Seychelles), Netatua Pelesikoti (Samoa), Emma Tompkins (UK), Arthur Webb (Fiji)

**Contributing Authors**

Dave Chadee (Trinidad and Tobago), Shobha Maharaj (Trinidad and Tobago)

**Review Editors**

Thomas Spencer (UK), Kazuya Yasuhara (Japan)

**Volunteer Chapter Scientist**

Veronique Morin (Canada)

**Contents**

Executive Summary

29.1. Introduction

29.2. Major Conclusions from Previous Assessments

29.3. Observed Impacts of Climate Change, including Detection and Attribution

29.3.1. Observed Impacts on Coastal and Marine Biophysical Systems

29.3.1.1. Sea Level and Inundation

29.3.1.2. Beaches and Coasts

29.3.1.3. Coral Reefs and Reef Fishes

29.3.1.4. Coastal Wetlands: Mangroves and Seagrasses

29.3.2. Observed Impacts on Terrestrial Biophysical Systems

29.3.2.1. Biodiversity and Forests

29.3.2.2. Hydrology and Water Resources

29.3.3. Observed Impacts on Human Systems

29.3.3.1. Settlements and Infrastructure

29.3.3.2. Tourism and Recreation

29.3.3.3. Human Health

29.3.3.4. Migration and Resettlement

29.4. Projected Integrated Climate Change Impacts

29.4.1. Projected Impacts for Islands based on Existing SRES Scenarios

29.4.2. New RCP Projections and Implications for Small Islands of GMST <2.0 Degrees

29.5. Inter- and Intra-Regional Transboundary Impacts

29.5.1. Physical Events and Impacts

29.5.1.1. Large Ocean Waves from Distant Sources

29.5.1.2. Trans-Continental Dust Clouds and their Impact

29.5.2. Movement and Impact of Introduced and Invasive Species across Boundaries

29.5.3. Spread of Aquatic Pathogens within Island Regions

29.5.4. Transboundary Movements and Human Health

- 1 29.6. Adaptation and Management of Risks
- 2 29.6.1. Addressing Current Vulnerabilities and Adaptation Gaps
- 3 29.6.2. Practical Experiences of Adaptation
- 4 29.6.2.1. Building Adaptive Capacity (using Traditional Knowledge, Linking Science with
- 5 Community Use, Technologies)
- 6 29.6.2.2. Addressing Risks
- 7 29.6.2.3. Working Collectively to Address Climate Impacts
- 8 29.6.2.4. Addressing Long-Term Climate Impacts, and Migration
- 9 29.6.3. Barriers to Adaptation
- 10 29.6.4. Mainstreaming and Integrating Climate Change into Development Plans and Policies
- 11
- 12 29.7. Adaptation and Mitigation Interactions
- 13 29.7.1. Assumptions/Uncertainties Associated with Adaptation and Mitigation Responses
- 14 29.7.2. Potential Synergies and Conflicts
- 15 29.7.2.1. Coastal Forestry
- 16 29.7.2.2. Energy Supply
- 17 29.7.2.3. Tourism
- 18
- 19 29.8. Facilitating Adaptation and Avoiding Maladaptation
- 20
- 21 29.9. Research and Data Gaps
- 22

23 Frequently Asked Questions

24

25 References

26

27

## 28 Executive Summary

29

30 **Distinguishing small islands.** Small islands are distinguished by their limited size, insular setting, maritime  
31 climates, small populations and economies, poor land resource base, and frequently their exposure to weather-  
32 climate- and ocean-related natural hazards. The small island states and territories considered here are mainly located  
33 in the tropics in the southern, central and western Pacific Ocean, central and western Indian Ocean, the Caribbean  
34 Sea, the eastern Atlantic off the west coast of Africa, and the more temperate Mediterranean Sea. The concerns of  
35 small island states and their needs in relation to future climate change differ in many ways from those of larger  
36 countries and continental regions. They also differ among themselves because of their cultural, economic and  
37 political diversity as well as in their contrasting physical and ecological characteristics and land and marine  
38 resources.

39

40 **Sea level, inundation and erosion.** Small islands have a long length of coast in proportion to island size. Their  
41 small land area and often low elevation coasts makes them particularly vulnerable to rising sea levels and impacts  
42 such as inundation, saltwater intrusion into ground water lenses and shoreline change. The *very likely* contribution of  
43 future mean sea level rise and increased extreme sea levels, coupled with the *likely* increase in tropical cyclone  
44 maximum wind speed is a specific issue for small island states (SREX Box 3-4). Observed impacts of past sea-level  
45 rise on small islands are not well documented. A sea-level rise signal cannot be discriminated from those of climate  
46 variability (e.g. ENSO) or storms in cases of inundation and seawater over-wash and intrusion into ground water  
47 lenses on small islands. [29.3.1.1] Similarly in the few studies of shoreline change on atoll and reef islands over the  
48 last few years and decades, a general coastal erosion trend has not been identified. [29.3.1.2] Thus, we have *low*  
49 *confidence* that sea-level rise will cause widespread destruction of islands in the next few decades, except in those  
50 locations that are presently experiencing coastal erosion and inundation and where human impacts have had major  
51 effects. [29.3.3.1, 29.6.1]

52

53 **Coastal environments and stresses.** Coral reefs, mangrove forests and sea grass beds are important marine  
54 resources in most tropical small islands and the well-being of island communities and many businesses (eg tourism)

1 is intimately linked to their on-going function. We have *high confidence* that reefs, mangrove and seagrass  
2 environments that are presently stressed by non-climatic factors are more at risk to the effects of climate change than  
3 those that are not so stressed. [29.3.1.3, 29.3.1.4] Increases in the frequency and extent of coral bleaching have been  
4 forecast and landward movement of mangroves is frequently constrained by coastal structures. [29.4.1.1] There is a  
5 need to fully understand the potential impacts of sea-level rise, increases in sea surface temperature and ocean  
6 acidification on these important small island littoral environments.

7  
8 **Freshwater availability and quality.** Freshwater availability and quality has been a major issue on many small  
9 islands. On atolls there is no surface water and on high limestone and volcanic islands catchments are small and  
10 steep. Model projections (SRES A1B) of future rainfall by 2100 across four small island' regions show an overall  
11 annual decrease of about 12 % in the Caribbean and a 3-5 % increase in the Indian and Pacific small island regions.  
12 [29.4.1.1, Table 29-1] But in addition to input precipitation many other factors are involved in the supply and quality  
13 of potable water on small islands. [29.3.2.2]

14  
15 **Local impacts; distant origins.** Many impacts on small islands are generated from well beyond the borders of an  
16 individual nation or island. These trans-boundary impacts may originate in distant regions including continental  
17 countries. Most trans-boundary processes have negative impacts. These include: airborne dust from the Sahara and  
18 Asia reaching small islands far down-drift from the desert source; and, large ocean swells generated by extra tropical  
19 cyclones and high latitude low pressure systems. [29.5.1.1, 29.5.1.2] Given the *likely* poleward shift in the main  
20 northern and southern hemisphere extra-tropical storm tracks it is possible that there will be a decline in the  
21 magnitude and frequency of such swell events in the future (SREX Chapter 3). Other trans-boundary impacts result  
22 from invasive plant and animal species that reach the warmth of small islands and the spread of aquatic pathogens  
23 that may have implications for human health. For island communities the trans-boundary implications of existing  
24 and future 'invasions' and human health challenges are projected to increase in a changing climate. [29.3.3.3,  
25 29.5.4]

26  
27 **Observed versus projected impacts.** The distinction between *observed impacts* of climate change and *projected*  
28 *impacts* is often not clear-cut in the literature on small islands. In fact many publications deal with both types of  
29 impact, often using a recent 'observed' impact relating to some extreme weather- climate- or ocean-related event as  
30 an analogy to what may happen in the future. Moreover, much of the literature on projected (future) climate change  
31 impacts on small islands is not specific about the scenario (s) used in impact studies, partly because of the difficulty  
32 in moving from global-scale scenarios and models to the scale of small islands. Downscaling has been a perennial  
33 problem. One implication of this blurring of the distinction between observed and projected is our *low confidence* in  
34 the scale of future impacts. However, on a positive note in-roads are now being made to redress this situation and  
35 three examples are given including of the use of downscaled SRES scenarios in a comprehensive assessment of the  
36 vulnerability of the fisheries in 22 Pacific island countries. If such studies are duplicated elsewhere confidence in  
37 projected impacts will increase.

38  
39 **Vulnerability indices: Inadequate to date.** Several attempts have been made to assess levels of vulnerability and  
40 identify gaps through national level indices. None provide a complete picture of island vulnerability. We have *low*  
41 *confidence* in any indicators of vulnerability that do not capture the essence of small islands. Rather we encourage  
42 the use of multiple measures of vulnerability (e.g. Table 29-3; Figure 29-3). Although lessons learned from  
43 adaptation experiences on one island may offer some helpful guidance to other small island states, we have *low*  
44 *confidence* in the wholesale transfer of adaptation options when the lenses through which they are viewed differ  
45 from one community to the next, based on ecological, socio-economic, cultural and political values. [29.8]

46  
47 **Vulnerability and experience.** Island vulnerability to climate change may be related to the experience and  
48 perceptions of islanders to both climate and non-climate stressors. Islands and islanders are recognized for their long  
49 experience of adapting to a host of hazards including weather-climate- and ocean-related hazards and for their  
50 resilience in coping with such events. We have *medium confidence* that adaptive capacity is better when the  
51 frequency of hazards is greater, but there may be limits to this capacity when small islands are going through rapid  
52 socio-economic change. We also recognize the need to combine indigenous or local knowledge and experience with  
53 modern technology into adaptation planning and execution. [29.6.2.1]

1 **Climate change and multiple stressors.** For most small islands climate change is just one of a series of multiple  
2 stresses that they must cope with, and often it is not the most important one. Increasingly there are arguments that  
3 priority in the short-term should be given to addressing immediate development problems such as water supply,  
4 waste management, deteriorating ecosystems and food security. We agree that addressing the critical social,  
5 economic and environmental issues of the day will *likely* increase human and environmental resilience to the longer-  
6 term impacts of climate change.

7  
8 **Constraints to adaptation.** Whilst lack of access to adequate financial, technology and human resources is often  
9 cited as the most critical constraint to implementing various climate change response strategies, there is evidence to  
10 show that endogenous factors such as culture, ethics, knowledge and attitudes to risk are equally important in  
11 making adaptation choices both at the national and community level (*high confidence*). [29.6.3] Mainstreaming and  
12 integrating climate change into contemporary development plans is seen as an appropriate goal, though several case  
13 studies document the difficulties in achieving that goal.

14  
15 **Adaptation and mitigation.** There is now a convergence of views that adaptation and mitigation on small islands  
16 are not trade-offs, but can be regarded as complementary components in the response to climate change (*medium*  
17 *confidence*). At least three key areas for adaptation-mitigation inter-linkages in small islands are identified here:  
18 coastal forestry, energy supply and tourism. The alignment of these sectors for potential emission reductions  
19 together with adaptation needs offers co-benefits in small islands, especially in the energy sector.

20  
21 **Adaptation and mal-adaptation.** Whilst there is agreement that assistance from the international community is  
22 vital for supporting adaptation and mitigation programs in small islands, there is increasing concern that some types  
23 of interventions may actually be maladaptive. [29.8, Box 29-1] Thus, caution is needed to ensure that donors are not  
24 driving the adaptation and mitigation agenda in small islands, as there is a risk that donor-driven adaptation or  
25 mitigation will not address the salient challenges on small islands (*high agreement*). This may lead to inadequate  
26 adaptation or a waste of scarce resources and may unintentionally cause enhanced vulnerability by supporting  
27 adaptation strategies that are externally derived, rather than optimizing the benefits of local practices that have  
28 proven to be efficacious through time. [29.6.2.3, 29.6.3, 29.8]

29  
30 **Community engagement.** Decisions about adaptation choices and their implementation are best facilitated where  
31 there is constructive engagement with the communities at risk, in a manner that fosters transparency, trust and  
32 genuine commitment to the process (*high confidence*). Participatory stakeholder involvement can yield valuable  
33 information about the priorities and expectations that communities attach to the sector for which adaptation is being  
34 sought. [29.6.2.1, 29.6.2.3, 29.6.4, 29.8]

## 35 36 37 **29.1. Introduction**

38  
39 It has long been recognized that greenhouse gas emissions from small islands are negligible in relation to global  
40 emissions, but that the threats of climate change and sea-level rise to small islands are very real. Indeed, it has been  
41 suggested that the very existence of some atoll nations are threatened by rising sea levels associated with global  
42 warming. Whilst such extreme scenarios are not applicable to all small island nations, there is no doubt that on the  
43 whole the impacts of climate change on small islands will have serious negative effects especially on socio-  
44 economic conditions and bio-physical resources – although impacts will be ameliorated by the extent and  
45 effectiveness of adaptation.

46  
47 The small islands considered in this chapter are principally sovereign states and territories located within the tropics  
48 of the southern and western Pacific Ocean, central and western Indian Ocean, the Caribbean Sea, and the eastern  
49 Atlantic off the coast of west Africa, as well as in the more temperate Mediterranean Sea.

50  
51 Although these small islands nations are by no means homogenous politically, socially, or culturally, or in terms of  
52 physical size and character or economic development, there has been a tendency to generalise about the potential  
53 impacts on small islands and their adaptive capacity. In this chapter we attempt to strike a balance between  
54 identifying the differences between small islands as well as recognising that small islands tend to share a number of

1 common characteristics that have distinguished them as a particular group in international affairs. Also in this  
2 chapter we reiterate some of the frequently voiced and key concerns relating to climate change impacts,  
3 vulnerability and adaptation whilst emphasising a number of additional themes that have emerged in the literature on  
4 small islands since the IPCC Fourth Assessment. These include situating climate change within the context of  
5 multiple stresses; the relationships between climate change policy, activities and development issues; externally  
6 generated trans-boundary impacts; and the implications of risk in relation to adaptation and the adaptive capacity of  
7 small island nations.  
8  
9

## 10 **29.2. Major Conclusions from Previous Assessments**

11

12 Small islands were not given a separate chapter in the IPCC First Assessment (FAR) in 1990 though they were  
13 discussed in the chapter on ‘World Oceans and Coastal Zones’ (Tsyban *et al.*, 1990). Two points were highlighted.  
14 First, that a 30-50 cm sea-level rise projected by 2050 would threaten low islands, and that a 1 m rise by 2100  
15 ‘would render some island countries uninhabitable’ (Tegart *et al.*, 1990: 4). Second, the costs of protection works to  
16 combat sea-level rise would be extremely high for small island nations. Indeed, as a percentage of GDP the  
17 Maldives, Kiribati, Tuvalu, Tokelau, Anguilla, Turks and Caicos, Marshall Islands and Seychelles were ranked  
18 among the ten nations with the highest protection costs in relation to GDP (Tsyban *et al.*, 1990: 6. 4). Over twenty  
19 years later these two points continue to be emphasized. For instance, although small islands represent only a fraction  
20 of total global damage projected to occur due to a sea-level rise of 1.0 m by 2100 (SRES A1 scenario) the actual  
21 damage costs for the small island states is enormous in relation to the size of their economies (Anthoff *et al.*, 2010:  
22 328) with several small island nations (Nauru, Marshall Islands, Palau, Federated States of Micronesia) being  
23 included in the group of ten countries with the highest relative impact in 2100 (Anthoff *et al.*, 2010: 328-330).  
24

25 The Second Assessment (SAR) in 1995 confirmed the vulnerable state of small islands, now included in a specific  
26 chapter titled ‘Coastal Zones and Small Islands’ (Bijlsma, *et al.*, 1996). However, importantly the SAR recognized  
27 that both vulnerability and impacts would be highly variable between small islands and that impacts were ‘likely to  
28 be greatest where local environments are already under stress as a result of human activities’ (Bijlsma, *et al.*, 1996:  
29 290-291). The report also summarized results from the application of a common methodology for vulnerability and  
30 adaptation analysis that gave new insights into the socio-economic implications of sea-level rise for small islands  
31 including:

- 32 • Negative impacts on virtually all sectors including tourism, freshwater resources, fisheries and agriculture,  
33 human settlements, financial services and human health;
- 34 • Protection is likely to be very costly; and,
- 35 • Adaptation would involve a series of tradeoffs.  
36

37 It also noted that major constraints to adaptation on small islands included: lack of technology and human resource  
38 capacity, serious financial limitations, lack of cultural and social acceptability and uncertain political and legal  
39 frameworks. Integrated coastal and island management was seen as a way of overcoming some of these constraints.  
40

41 The Third Assessment (TAR) in 2001 included a specific chapter on ‘Small Island States’. In confirming previously  
42 identified concerns of small island states two important factors were highlighted, the first relating to sustainability  
43 noting that ‘with limited resources and low adaptive capacity, these islands face the considerable challenge of  
44 meeting the social and economic needs of their populations in a manner that is sustainable’ (Nurse *et al.*, 2001: 845).  
45 And the second, that there were other issues faced by small island states concluding that ‘for most small islands the  
46 reality of climate change is just one of many serious challenges with which they are confronted’ (Nurse *et al.*, 2001:  
47 846). Both of these themes are further developed in the present assessment.  
48

49 Until the Fourth Assessment (AR4) in 2007, sea-level rise had dominated vulnerability and impact studies of small  
50 island states. Whilst a broader range of climate change drivers and geographical spread of islands was included in  
51 the ‘Small Islands’ chapter, Mimura *et al.* (2007) prefaced their assessment by noting that the number of  
52 ‘independent scientific studies on climate change and small islands since the TAR’ had been quite limited and in  
53 their view ‘the volume of literature in refereed international journals relating to small islands and climate change

1 since publication of the TAR is rather less than that between the SAR in 1995 and TAR in 2001' (Mimura *et al.*,  
2 2007: 690).

3  
4 Since AR4 the literature on small islands and climate change has increased substantially. A number of features  
5 distinguish the literature we review here from that included in earlier assessments. First, the literature appears more  
6 sophisticated and does not shirk from dealing with the complexity of small island vulnerability, impacts and  
7 adaptation or the differences between island states. Second, and related to the first, the literature is less one-  
8 dimensional, and deals with climate change in a multidimensional manner as just one of several stressors on small  
9 island nations. Third, there has also been a tendency to critique some aspects of climate change policy, notably in  
10 relation to development and security, and to suggest that adaptations for the future are being placed above critical  
11 needs of the present. As a result, it is argued, there is a reduction in resilience that will have serious ramifications for  
12 small island adaptation in the future.

13  
14 The present chapter builds on these earlier assessments. Inevitably there is some repetition of the key impacts,  
15 vulnerability and adaptation to climate change and sea level rise of small islands. Such themes continue in this  
16 assessment, though we also raise a number of new concerns as well as some hopeful signs for the future.

### 19 **29.3. Observed Impacts of Climate Change, including Detection and Attribution**

20  
21 The distinction between *observed* impacts of climate change and *projected* impacts is often unclear in the small  
22 islands literature and discussions. Publications frequently deal with both aspects of impacts interchangeably, and use  
23 observed impacts from, for instance an extreme seasonal event, as an analogy to what may happen in the future due  
24 to climate change (e.g. Lo-Yat *et al.*, 2011). The key climate and ocean drivers of change that impact small islands  
25 include variations in air and ocean temperatures, ocean chemistry, rainfall, wind strength and direction, sea-levels  
26 and wave climate and particularly the extremes such as tropical cyclones, drought and distant storm swell events. All  
27 have varying impacts, dependent on the magnitude and frequency and temporal and spatial extent, as well as on the  
28 bio-physical nature of the island and its social, economic and political setting.

#### 31 **29.3.1. Observed Impacts on Coastal and Marine Biophysical Systems**

##### 33 *29.3.1.1. Sea Level and Inundation*

34  
35 Sea-level rise poses one of the most widely recognized climate change threats to low-lying coastal areas (Church  
36 and White 2011; Cazenave and Llovel, 2010; Nicholls and Cazenave, 2010). This is particularly important in the  
37 case of small islands where the great majority of human communities and infrastructure are located in coastal zones  
38 with limited resettlement opportunities. This is especially so on atoll islands where entire land masses are seldom  
39 more than 1.0 - 1.5m above current high spring tide level (Woodroffe, 2008; Yamano *et al.*, 2007) (Figure 29-1).

40  
41 [INSERT FIGURE 29-1 HERE

42 Figure 29-1: Small island regions vulnerable to coastal flooding caused by future relative or climate-induced sea-  
43 level rise. At highest risk are coastal zones with dense populations, low elevations, appreciable rates of subsidence,  
44 and/or inadequate adaptive capacity (Nicholls and Cazenave, 2010).]

45  
46 Rates of global average sea-level rise have continued at approximately  $3.3 \text{ mm yr}^{-1}$  between 1993 and 2011 and  
47 acceleration is detected in longer records since 1870 (Merrifield *et al.*, 2009; Cazenave and Remy, 2011; Church and  
48 White, 2011) (See Chapter 13, Working Group 1 for details). Rates of sea-level rise are however not uniform across  
49 the globe and large regional differences have been detected in the south Indian Ocean, tropical Pacific, north Pacific,  
50 and northwestern Atlantic where rates have been significantly higher than the global average (Meyssignac *et al.*,  
51 2012). In the case of the tropical western Pacific region where a large number of small island and atoll communities  
52 exist, rates up to four times the global average (approximately  $12 \text{ mm yr}^{-1}$ ) have been measured by satellite  
53 altimetry between 1993 and 2009 (Becker *et al.*, 2012; Meyssignac *et al.*, 2012).

1 Whilst this rapid increase is of immediate concern it is important to note these elevated rates are derived from  
2 relatively short records collected with satellite altimetry and are thought to describe transient sea-level change  
3 associated with natural cyclic climate phenomena, e.g. ENSO (El Niño-Southern Oscillation), NAO (North Atlantic  
4 Oscillation), PDO (Pacific Decadal Oscillation) (Cazenave and Remy, 2011). ENSO for example, has a strong  
5 influence over mean sea level in the tropical western Pacific region decreasing sea levels during El Niño (~ 30cm)  
6 and increasing sea level during La Nina (~ 30cm) (Becker *et al.*, 2012).

7  
8 Related to persistent La Nina conditions through 2010 – 2011, sea level gauges in Majuro (Marshall Islands), Manus  
9 Island (Papua New Guinea), Pohnpei (Federated States of Micronesia) and Apia (Samoa) recorded some of their  
10 highest monthly mean levels on their approximate 20 year gauge records (SPSLCMP, 2012). The islands of Yap,  
11 Pohnpei and Chuuk (Federated States of Micronesia), Saipan and Guam (Mariana Islands), Rabaul (Papua New  
12 Guinea) and Honiara (Solomon Islands) have also been subject to very high rates of sea-level rise since 1993 (up to  
13 11+/- 3mm yr<sup>-1</sup>) again due to strong and persistent La Nina conditions superimposed over incremental sea-level rise  
14 (Becker *et al.*, 2012). At Nauru, Funafuti (Tuvalu), Pago Pago (American Samoa), Papeete (French Polynesia),  
15 Noumea (New Caledonia), and Tarawa (Kiribati), overall rates of sea-level rise have been significantly higher than  
16 the global average from 1950 – 2009 (Becker *et al.*, 2012). In the wider Caribbean estimated rates of absolute sea  
17 level change vary greatly between locations, ranging between Jamaica (- 4 mm yr<sup>-1</sup>) and Barbados (+3 mm yr<sup>-1</sup>).  
18 Likewise rates of relative sea-level change vary from Honduras (+ 8. 6 mm yr<sup>-1</sup>) to Jamaica (- 6. 4 mm yr<sup>-1</sup>) due to  
19 the interaction of vertical tectonic motion of differing land mass (Sutherland *et al.*, 2008).

20  
21 Inundation associated with high spring tide conditions at Fongafale Island, Funafuti Atoll, Tuvalu, has been well  
22 publicized and study has shown that areas of the central portion of Fongafale are below sea-level at high spring tide  
23 (Yamano *et al.*, 2007). Regular saline flooding of internal low areas of Fongafale occurs routinely and given the  
24 relationship of land height to mean sea level, flooding is expected to become more frequent and extensive in the  
25 future (Yamano *et al.*, 2007). Such low-lying central areas on atoll islands are common features and are often  
26 associated with subsistence agriculture and these can be expected to become increasingly subject to flooding due to  
27 sea-level rise (Woodroffe 2008; Yamano *et al.*, 2007; Webb, 2007).

28  
29 Tectonic vertical subsidence is also important to understand when interpreting sea-level rise impact as is coastal  
30 engineering that can disturb shoreline processes. Communities on the Torres Islands, Vanuatu have been displaced  
31 due to increasing inundation of low-lying settlement areas (Ballu *et al.*, 2011). From 1997 – 2009 sea-level rise was  
32 estimated to have been approximately 150mm however tectonic subsidence also estimated at -117 +/- 30mm over  
33 the same period doubled the apparent rate of sea-level rise at this location in a very short period of time (Ballu *et al.*,  
34 2011). A rural community on Abaiang Atoll, Kiribati has also been impacted by tidal inundation and saline  
35 incursion into garden areas (Webb, 2006). In this location adjustments to shoreline processes following the closure  
36 of an ocean passage had resulted in shoreline instability and rapid erosion, exacerbating shoreline vulnerability and  
37 tidal flooding (Webb, 2006). Whilst the available documented cases of inundation frequently have additional  
38 extenuating circumstances which interact with climate change related sea-level rise, these examples serve to  
39 highlight the innately vulnerable nature of these locations to sea-level rise.

#### 40 41 42 29.3.1.2. Beaches and Coasts

43  
44 Shoreline resilience in tropical carbonate systems is inextricably linked to sediment supply from the adjacent living  
45 reef systems (Perry *et al.*, 2011) and maintained structural integrity of reefs is critical to wave energy mediation. The  
46 incidence of coral bleaching has risen over the last century (Veron *et al.*, 2009; Oliver *et al.*, 2009) and *in situ* cores  
47 from *Porites* in the Great Barrier Reef (GBR) show that coral calcification rates in the GBR have declined over 14  
48 per cent since 1990 (De'ath *et al.*, 2009). Likewise, Tanzil *et al.* (2009) showed that calcification rates and linear  
49 extension of the coral *Porites lutea* from eight sites in Southern Thailand had decreased by 23.5% and 19.4 to 23.4%  
50 over an approximate 20 year period. In respect to small islands the waters of the greater Caribbean (Turks Caicos,  
51 Lesser Antilles and Jamaica) have been shown to now be exposed to decreasing aragonite saturation levels, caused  
52 by increasing CO<sub>2</sub> concentration (acidification) and this has negative implications to the on-going productivity,  
53 structure and composition of those reef systems (Gledhill *et al.*, 2008). Important species of coralline algae that  
54 contribute to the structural integrity of reefs have also been shown to be sensitive to increased CO<sub>2</sub> concentration

1 (Kuffner *et al.*, 2007; Anthony *et al.*, 2008). Given the critical role reefs play to sediment supply and wave energy  
2 mediation in carbonate shoreline systems any disturbance in reef productivity or structure can be expected to  
3 influence shoreline processes.  
4

5 Additional research providing insights into island shoreline response to sea-level rise has become available since  
6 AR4 and this is summarised below. Historical shoreline position change over the last 20 – 60 years measured in 27  
7 Central Pacific atoll islands showed that 86 per cent of these islands either had remained stable or had increased in  
8 their land area (Webb and Kench, 2010). Similar, dynamic equilibrium was found in a four year study of 17  
9 relatively pristine islands on two additional Central Pacific atolls, this study concluded that at this time sea level rise  
10 was unlikely to be a main influencing factor in these shoreline dynamics (Rankey, 2011). On the uninhabited Raine  
11 Island on the Great Barrier Reef, Dawson and Smithers (2010) found that processes were dynamic but that both  
12 island area and volume increased 6 per cent and 4 per cent, respectively between 1967 and 2007. These and other  
13 studies conclude that at this time, normal seasonal erosion and accretion processes predominate over any measured  
14 long-term morphological trends or signals associated with climate change (Kench and Brander, 2006; Kench *et al.*,  
15 2009; Dawson and Smithers, 2010). It is important to note that the concerns of vulnerability from inundation to on-  
16 going incremental sea-level rise in low-lying islands (especially atolls) provided in AR4, remains unchanged.  
17

18 The possibility of shoreline resilience presents opportunities in that resilient shores are better able to provide wave  
19 protection, suggesting an imperative for small island communities to protect natural shoreline systems from direct  
20 human interference. Changing patterns of human settlement and direct impacts on shoreline processes present  
21 immediate erosion challenges in populated islands and coastal zones (Yamano *et al.*, 2007; Storey and Hunter, 2010;  
22 Novelo-Casanova and Suarez, 2010; Ford, 2012) and mask attribution. A study of widespread erosion on Majuro  
23 Atoll found that erosion was common however attribution of this shoreline instability to factors like sea level rise  
24 were masked by pervasive anthropogenic impacts to the natural coastal systems (Ford, 2012). Likewise, Cambers  
25 (2009) measured average beach erosion rates of 0.5 m yr<sup>-1</sup> in eight Caribbean islands from 1985-2000, but was  
26 unable to easily quantify the extent of attribution to anthropogenic factors, natural climate variability and / or  
27 climate change and sea-level rise.  
28  
29

### 30 29.3.1.3. Coral Reefs and Reef Fishes

31  
32 Coral reef ecosystems are one of the most important resources in small tropical islands and the culture and wellbeing  
33 of island communities is inextricably linked to their on-going function, biodiversity and productivity. Coral reefs  
34 provide habitat for a host of marine species upon which many island communities are deeply dependent for  
35 subsistence diets as well as underpinning key beach and reef-based touristic economic activity (Bell *et al.*, 2011;  
36 Perch-Nielsen, 2010). The documented sensitivity of coral reef ecosystems to climate change (e.g. Stokes *et al.*,  
37 2010; Lough and van Oppen, 2009; Hoegh-Guldberg *et al.*, 2007) cannot be considered in the context of small  
38 islands without consideration of the immediate interdependence of human wellbeing in tropical island settings.  
39

40 Increased coral bleaching due to thermal stress and reduced calcification rates due to increasing CO<sub>2</sub> concentration  
41 are expected to affect the function and viability of living reef systems (Hoegh-Guldberg *et al.*, 2007; Eakin *et al.*,  
42 2009) and some studies are starting to observe impacts consistent with a regional decline (De'ath *et al.*, 2009; Tanzil  
43 *et al.*, 2009; Cantin *et al.*, 2010). Unprecedented bleaching events in small islands have also been recorded in some  
44 of the most pristine, uninhabited locations on Earth. Surveys in 2004 in the remote Phoenix Group of Kiribati found  
45 that there had been near 100 per cent coral mortality in the lagoon environment and 62 per cent mortality on the  
46 outer leeward slopes of the otherwise pristine reefs of Kanton Atoll during 2002 / 2003 (Alling *et al.*, 2007). Similar  
47 patterns of mortality were observed in four other atolls in the Phoenix group during the same study and temperature-  
48 induced coral bleaching has also been recorded in remote and unpopulated Palmyra Atoll during the 2009 ENSO  
49 event (Williams *et al.*, 2010). In 2005 extensive bleaching was recording at 22 sites around Rodrigues Island in the  
50 western Indian Ocean with up to 75% of the dominant species affected in some areas (Hardman *et al.*, 2007) and in  
51 2005 a reef survey around Barbados following a Caribbean regional bleaching event revealed the most severe  
52 bleaching ever recorded with approximately 70% of corals impacted (Oxenford *et al.*, 2008). Globally, the incidence  
53 and implications of temperature-related coral bleaching is well documented and the synergistic implication of



1 increasing ocean acidification is likewise considered a major threat to the long-term survival of today's coral reef  
2 ecosystems (De'ath, *et al.*, 2009; Veron *et al.*, 2009).

3  
4 Islands have limited response options to thermal stress and acidification however, there is evidence to show that  
5 coral reef resilience is enhanced in the absence of additional environmental stress such as declining water quality. In  
6 Belize chronologies of growth rates in massive corals *Montastraea faveolata* over the past 75–150 years showed that  
7 the bleaching event in 1998 was unprecedented in the past century but that the severity of the response also appeared  
8 to stem from reduced thermal tolerance resulting from the direct interactive effects of human coastal development  
9 (Carilli *et al.*, 2010). Likewise a study over a 40 year period (1960's – 2008) in the Grand Recif of Tulear,  
10 Madagascar concluded that severe degradation was evident, however this was mostly ascribed to direct  
11 anthropogenic disturbance of the near shore marine environment, despite an average 1°C increase in temperature  
12 over this period (Harris *et al.*, 2009). Coral recovery following the 2004 bleaching event in the central Pacific atolls  
13 Tarawa and Abaiang was also noted to likely be improved in the absence of direct human impacts (Donner *et al.*,  
14 2010). The implementation of an appropriate reef management policy as a measure to promote reef ecosystem  
15 resilience appears to be a sound strategy in small island environments.

16  
17 The loss of coral reef habitat has dire implications to coastal fisheries resources (Pratchett *et al.*, 2009) and nowhere  
18 more so than in small islands where reef based subsistence and tourism activities are so intimately linked to the  
19 wellbeing and economies of these islands (Bell *et al.*, 2011). In Kimbe Bay, Papua New Guinea it was estimated that  
20 65% of coastal fish are dependent on living reefs at some stage in their life cycles and that most of these declined in  
21 abundance following reef degradation (Jones *et al.*, 2004). Even where coral reef recovery occurs following  
22 bleaching, reef associated species composition may not recover to its original state (Pratchett *et al.*, 2009; Donner *et al.*,  
23 2010) and even where bleaching is not the immediate threat, SST anomaly events like that reported by Lo-Yat *et al.*  
24 (2011) between 1996 and 2000, showed an associated lag in larval supply of coral reef fishes in near shore waters  
25 of Rangiroa Atoll, French Polynesia. Higher temperatures have also been implicated in negative affects to spawning  
26 of adult reef species (Munday *et al.*, 2009; Donelson *et al.*, 2010).

#### 27 28 29 29.3.1.4. Coastal Wetlands: Mangroves and Seagrasses

30  
31 Like coral reefs, mangroves and sea grass environments provide a range of vital ecosystem goods and services  
32 (Polidoro *et al.*, 2010 and Waycott *et al.*, 2008). Both habitats play a significant role in the wellbeing of small island  
33 communities and mangroves in particular perform a host of commercial and subsistence uses as well as providing  
34 natural coastal protection from erosion and storm events (Ellison, 2009; Krauss *et al.*, 2010; Waycott *et al.*, 2011).

35  
36 Sea-level rise is reported as the most significant climate change threat to the survival of mangroves (McKee *et al.*,  
37 2007; Waycott *et al.*, 2011) and the loss of seaward edge of mangroves at Hungry Bay, Bermuda has been recorded  
38 by Ellison (1993) who attributes this to ongoing sea-level rise and the inability of mangroves to tolerate the  
39 increased inundation at the seaward margin. In other island studies in the Caribbean and the tropical Pacific there is  
40 varying observations in regards to the potential for sedimentation rates in mangroves forests to be able to keep pace  
41 with sea level rise (McKee *et al.*, 2007; Krauss *et al.*, 2003; 2010). In Kosrae and Pohnpei Islands in the Federated  
42 States of Micronesia, Krauss *et al.* (2010) found significant variability in mangrove average soil elevation changes  
43 due to deposition and this ranged from a deficit of 4.95 mm y<sup>-1</sup> to a surplus of 3.28 mm y<sup>-1</sup> relative to their sea-level  
44 rise estimates. This depositional potential is mostly reported from high island studies via the addition of terrigenous  
45 inputs. However, Rankey's (2011) study of shoreline processes in atolls in Kiribati also noted significant natural  
46 seaward migration (up to 40m) of some mangrove areas between 1969 and 2009. Likewise Webb (2007) found  
47 similar patterns in both mangroves and sea grass environments on Pinglap Atoll, Federated States of Micronesia  
48 between 1941 and 2006. This suggests sediment accretion can also occur in the absence of terrigenous inputs.  
49 Otherwise, in the absence of vertical accretion landward migration may occur where accommodation space permits  
50 (Gilman *et al.*, 2008), however coastal or back-beach areas in small islands are seldom extensive and observations  
51 on Martinique Island, in the Caribbean, show sea-level rise combined with coastal development is reducing the  
52 resilience or migration possibilities of the island's coastal wetland environments (Schleupner, 2008).

1 The response of sea grass to climate change stress is likely to be complex, regionally variable and potentially  
2 manifest in quite different ways even in the same location over foreseeable temporal time frames. A study of seven  
3 species of sea grasses from tropical Green Island, Australia highlighted the variability in response to heat and light  
4 stress (Campbell *et al.*, 2006) and likewise Koch and Erskine (2001) showed that sea grasses in Florida Lagoon only  
5 showed a dieback response to increased light and temperature conditions if ambient sulphide concentrations were  
6 also increased. Connolly's (2009) review of climate change impacts on sea grasses suggests increasing atmospheric  
7 CO<sub>2</sub> concentrations are likely to initially increase productivity and biomass of sea grass meadows. However, light  
8 reduction may be a limiting factor to sea grass growth due to increased depth (Ralph *et al.*, 2007) and Ogston and  
9 Field (2010) observed that a 20 cm rise in sea level may double suspended sediment loads and turbidity in the water  
10 column on Hawaii's Molokai Island's fringing reefs, negatively impacting benthic photosynthetic species such as  
11 sea grasses. Otherwise, temperature stress is most commonly reported as the main expected climate change impact  
12 on sea grass (e.g. Marbá and Duarte 2010; Campbell *et al.*, 2006; Waycott *et al.*, 2011). Literature on observational  
13 data of diebacks in small islands is scarce but research in the Balearic Islands (Western Mediterranean) has shown  
14 that over a six-year study, sea grass shoot mortality and recruitment rates were negatively influenced by higher  
15 temperature (Marbá and Duarte 2010).

### 18 29.3.2. Observed Impacts on Terrestrial Biophysical Systems

#### 20 29.3.2.1. Biodiversity and Forests

22 Climate change impacts such as sea level rise and increasing temperatures has been linked with disturbance of  
23 terrestrial species, communities and ecosystems within islands however those climate change impacts reported are  
24 frequently seen as one of several drivers operating simultaneously to threaten biodiversity within small islands  
25 (Blackburn *et al.*, 2004; Didham *et al.*, 2005).

27 Sea level rise in conjunction with more frequent and intense hurricanes, have been observed to threaten the long-  
28 term persistence of freshwater-dependent ecosystems within low-lying islands in the Florida Keys (Goodman *et al.*,  
29 2012; Ross *et al.*, 2008). On Sugarloaf Key, Ross *et al.* (2009) found pine forest area declined from 88 to 30 h from  
30 1935 to 1991 due to increasing salinization and rising ground water, with vegetation transitioning to more saline  
31 tolerant species such as mangroves. Likewise observations on two carbonate islands in the Bahamas demonstrate the  
32 synergistic impacts of increasing sea level and reduced rainfall. Greaver and Sternberg (2010) found that during  
33 periods of reduced rainfall the shallow freshwater lens subsides and contracts landward and ocean water infiltrates  
34 further inland below coastal strand vegetation. The combination of drier conditions and saline incursion in deeper  
35 soils impacts vegetation formerly reliant on deeper freshwater reserves.

37 Increasing global temperatures also leads to altitudinal species range shifts and contractions have also been recorded  
38 within high islands with an upward creep of the tree line and associated faunal species (Benning *et al.*, 2002).  
39 Comparative vegetation distribution and composition from 1906 to 2006 in the Central Mountain Range of Taiwan  
40 found an upwards shift of about 3.6 m per year in the upper altitudinal limits of vegetation distributions (Jump *et al.*,  
41 2012) and in sub-Antarctic Marion Island, Parolo and Rossi (2008) found an altitudinal shift of 3.4 m per year for  
42 plant species. Reduction in the numbers and sizes of endemic populations caused by such habitat constriction and  
43 changes in species composition in mountain systems may result in demise and possibly extinction of endemic  
44 species (Chen *et al.*, 2009; Pauli *et al.*, 2007; Sekercioglu *et al.*, 2008). Likewise, vegetation cover within the grass  
45 communities on the Falkland Islands was observed to decrease after two years of warming (0.7° C), with two  
46 species (*Poa annua* and *Aira praecox*) disappearing (Bokhorst *et al.*, 2007). Similarly, decreased population growth  
47 rates have also been recorded for soil arthropod communities on the Falkland islands (Bokhorst *et al.*, 2008) and for  
48 soil oribatid mites on Svalbard (Webb *et al.*, 1998) due to temperature increases of 1 to 2 ° C.

50 Changes in precipitation also interact with changing temperature and in manipulative experiments on Marion Island,  
51 results indicate that continued warming and drying may lead to a population decline of the 'keystone' species such  
52 as the cushion plant (*Azorella selago*) (Le Roux *et al.*, 2005). Recent study of the tropical bird species the Mauritius  
53 kestrel suggests that changing rainfall conditions in Mauritius over the last 50 years have resulted in this species  
54 having reduced reproductive success due to a mismatch between the timing of breeding and peak food abundance

1 (Senapathi *et al.*, 2011). Otherwise, altitudinal temperature change has also been reported to influence the  
2 distribution for disease vectors such as mosquitoes potentially threatening biota unaccustomed to such vectors  
3 (Freed *et al.*, 2005). Changing climatic conditions have also been documented to enhance conditions necessary for  
4 the spread of exotic and pest species within the mid-latitude islands (Kudo *et al.*, 2004) as well as within species  
5 poor sub-Arctic/Antarctic islands (Chapuis *et al.*, 2004; Frenot *et al.*, 2005), leading to changes in species  
6 assemblages and ecosystem function (Chown and Convey, 2007).  
7  
8

#### 9 29.3.2.2. *Hydrology and Water Resources*

10  
11 Freshwater supply in small island environments has always presented challenges and has been an issue raised in all  
12 previous IPCC reports. On high volcanic and granitic islands small and steep river catchments respond rapidly to  
13 rainfall events and watersheds generally have restricted storage capacity. On porous limestone and low atoll islands  
14 surface runoff is minimal and water rapidly passes through the substrate into the ground water lens. Rainwater  
15 harvest is also an important contribution to freshwater access and complex alternatives like desalination has mixed  
16 success in small island settings due to operational costs and complexity (White and Falkland, 2010). Detection of  
17 long-term statistical change in precipitation is thus a key prerequisite to understanding the impacts of climate change  
18 in small island hydrology and water resources.  
19

20 Rapidly growing demand, land use change, urbanisation and tourism are already placing significant strain on the  
21 limited freshwater reserves in small island environments (Cashman *et al.*, 2010; Emmanuel and Spence, 2009;  
22 White and Falkland, 2010; Moglia *et al.*, 2008a, 2008b; White *et al.*, 2007). In the Caribbean there is considerable  
23 variation in the types of freshwater supplies utilised, including groundwater, surface flow, rainwater harvest and  
24 desalination, nevertheless concern over the status of freshwater availability has been expressed for at least the past  
25 30 years (Cashman *et al.*, 2010). Rainfall records averaged for the Caribbean region over the past 100 years also  
26 show a consistent 0.18 mm/year reduction in rainfall, a trend that is projected to continue (Jury and Winter, 2010),  
27 The situation of water availability in the Caribbean is likely to deteriorate unless astutely managed.  
28

29 Saline intrusion into fresh groundwater reserves on atoll islands is frequently attributed to incremental sea-level rise  
30 yet there is a paucity of empirical evidence to support this premise (e.g. Rozell and Wong, 2010). White and  
31 Falkland's (2010) review of existing small island studies indicates that a sea level increase of up to 1 m would have  
32 negligible salinity impacts on small island groundwater lenses so long as there is adequate vertical accommodation  
33 space, island shores remain intact, rainfall patterns do not change and direct human impacts are managed. However,  
34 wave overtopping and wash over can be expected to become more frequent with sea level rise and this has been  
35 shown to impact freshwater lenses dramatically. On Pukapuka Atoll, Cook Islands storm surge over-wash occurred  
36 in 2005 and caused the fresh water lenses to become immediately brackish and took some 11 months to recover to  
37 conductivity levels appropriate for human use (Terry and Falkland, 2010). The ability of freshwater lens' to float  
38 upwards within the matrix of the island in step with incremental sea level rise also means that in low-lying and  
39 central areas of many atolls the lens may 'express' at the surface. This phenomenon already occurs in very low-lying  
40 central areas of Fongafale Island, Tuvalu, and during 'king' tides large areas of the inner part of the island become  
41 inundated with brackish waters (Yamano *et al.*, 2007; Webb 2006; 2007).  
42  
43

#### 44 29.3.3. *Observed Impacts on Human Systems*

##### 45 29.3.3.1. *Settlements and Infrastructure*

46  
47  
48 Traditional patterns of settlement and the more recent interest in tourism have resulted in the great majority of  
49 infrastructure and development being located in the coastal fringe of small islands. In the case of atoll islands, land  
50 area is seldom more than 1 km wide from lagoon to ocean coasts and frequently far less. As such, all development  
51 and settlement on atolls is essentially coastal. It follows that populations, infrastructure, agricultural areas and fresh  
52 groundwater supplies are all vulnerable to extreme tides, wave and surge events and sea level rise. Population drift  
53 from outer islands or from inland on high islands, together with rapid population growth in main centers, further  
54 exacerbates these problems and the lack of accommodation space drives growing populations into ever more

1 vulnerable locations. Additionally, without adequate resources and planning, engineering solutions such as shoreline  
2 reclamation also frequently place communities and infrastructure in positions of increased risk (Schleupner, 2008;  
3 Yamano *et al.*, 2007).

4  
5 Many of the environmental stresses that have been attributed to Tuvalu, the Marshall Islands and Maldives are in  
6 fact appropriate only to the major center and its surrounds, that is Funafuti, Majuro and Male respectively. As an  
7 example Storey and Hunter (2010) indicate the ‘Kiribati’ problem does not refer to the whole of Kiribati but is  
8 generally restricted to the southern half of Tarawa atoll where preexisting issues of severe overcrowding,  
9 proliferation of informal housing and unplanned settlement, inadequate water supply, poor sanitation and solid waste  
10 disposal, pollution and conflict over land ownership are of immediate importance. These problems require  
11 immediate resolution if the vulnerability of the South Tarawa community to the ‘real and alarming treat’ of climate  
12 change is to be managed effectively (Storey and Hunter, 2010).

13  
14 The issue of ‘coastal squeeze’ remains a concern for many small islands in the Caribbean, the Pacific, Indian Ocean  
15 and the Mediterranean, as there is a constant struggle to manage the requirements for physical development against  
16 the need to maintain ecological balance (Fish *et al.*, 2008; Sano *et al.*, 2010; Gero *et al.*, 2011; Mycoo, 2011). The  
17 island of Martinique in the Caribbean exemplifies the point, where physical infrastructure prevents the beach and  
18 wetlands from retreating landward as a spontaneous adaptation response to increased rates of coastal erosion  
19 (Schleupner, 2008). Moreover, intensive coastal development in the limited coastal zone combined with population  
20 growth and tourism have placed great stress on the coast and has resulted in dense aggregations of infrastructure and  
21 people in potentially vulnerable conditions.

22  
23 Rapid unplanned urban development patterns on Majuro Atoll also highlight the unavoidable abandonment of  
24 traditional settlement patterns where the original settings for villages coincided with the least vulnerable locations on  
25 the island (Spennemann, 1996). Likewise, geophysical studies of Fongafale Island, the capital of Tuvalu, show that  
26 engineering works during World War II, and rapid development and population growth since independence, has lead  
27 to the settlement of inappropriate shoreline and swampland areas leaving communities in heightened conditions of  
28 vulnerability (e.g. Yamano *et al.*, 2007). Ascribing direct climate change impacts in such disturbed environments is  
29 problematic due to the existing multiple lines of stress on the island’s biophysical and social systems. However, it is  
30 clear that such pre-existing conditions of vulnerability add to the threat of climate change in such locations.

### 31 32 33 29.3.3.2. *Tourism and Recreation*

34  
35 Linkages between weather, climate and tourism in small islands have been assessed on several occasions, including  
36 in IPCC assessments. Weather conditions affect decisions by tourists to visit certain destinations and not others,  
37 particularly when seasonal variations are pronounced, as in the case of island destinations located in the temperate  
38 zone. In a study of Mediterranean tourism Moreno (2010) confirms the importance of climate as a destination  
39 attribute, but he argues that ‘heat waves’ may be considered ‘not too negative’ by tourists, and such conditions may  
40 not have adverse impacts on the tourism trade. ‘Ideal weather’ for beach tourism is associated with temperatures of  
41 approximately 28°C, light breezes and a blue sky. If these conditions were to be found in more temperate countries  
42 as a result of climate change, it would have only a moderate effect on destination choice. This assertion is to an  
43 extent supported by Gossling *et al.* (2006) with regard to tourism on the island of Zanzibar. They suggest that  
44 climate change affects tourism performance, not only because of actual impacts, but also because of perceptions of  
45 tourists regarding other climate variables, such as more rain, storms, and high humidity. These are more likely to  
46 negatively influence travel decisions than higher temperatures alone, the latter not necessarily perceived as negative.

47  
48 Climate can also impact directly on the resources that support tourism in small islands. Observed impacts include  
49 coastal erosion are a result of coral bleaching and extreme wave action (Sheppard *et al.*, 2005). In a recent study in  
50 the Caribbean, it was found that more than 80% of tourists in Bonaire and Barbados would be unwilling to  
51 undertake repeat visits in cases of coral bleaching and coastal erosion (Uyarra *et al.*, 2005). Extreme drought events  
52 linked to climate change also impacts on tourism, especially on islands that depend upon natural sources of water to  
53 feed the water requirements of the tourism industry (Payet & Agricole, 2006). As a consequence some islands with  
54 strong tourism are investing in coral reef restoration, beach rehabilitation and desalination plants in attempts to

1 reverse the negative publicity arising from those observed impacts. Such impacts also cause concern among  
2 investors in the tourism industry, especially in terms of insurance premiums and the additional costs of adaptation.  
3

#### 4 5 29.3.3.3. *Human Health* 6

7 Many small island states currently suffer from climate-sensitive health outcomes, including morbidity and mortality  
8 from extreme weather events, certain vector- and food- and water-borne diseases (Ebi, *et al.*, 2006). Extreme weather  
9 and climate events such as tropical cyclones, storm surges, flooding, and drought can have both short- and long-term  
10 effects on human health, including drowning, injuries, increased disease transmission, and health problems  
11 associated with deterioration of water quality and quantity. Most small island nations are in tropical areas with  
12 weather conducive to the transmission of diseases such as malaria, dengue, filariasis, and schistosomiasis.  
13

14 The linkages between human health, climate variability and seasonal weather have been demonstrated in several  
15 recent studies. Leptospirosis is an infectious disease that has been identified in the Caribbean as a ‘highly endemic  
16 zone for leptospirosis’ with Guadeloupe, Barbados, and Jamaica representing the highest annual incidence (13 to 7.8  
17 per 100,000 population) in the world with only the Seychelles being higher (43.2 per 100,000 population) (Pappas *et al.*, 2008). Studies conducted in Guadeloupe demonstrated a link between El Niño occurrence and leptospirosis  
19 incidence with rates increasing to 13 per 100,00 population in El Niño years as opposed to 4.5 cases per 100,00  
20 inhabitants in La Niña and neutral years (Herrmann-Storck *et al.*, 2008). In addition, epidemiological studies  
21 conducted in Trinidad reviewed the incidence of leptospirosis during the period 1996–2007 and showed seasonal  
22 patterns in the occurrence of confirmed leptospirosis cases, with significantly ( $P < 0.001$ ) more cases or 75% of all  
23 cases occurring in the wet season, May to November (193 cases), than during the dry season, December to May (66  
24 cases) (Mohan *et al.*, 2009). Recently changes in the epidemiology of leptospirosis have been detected especially in  
25 tropical islands with the main factors being climatic and anthropogenic (Pappas *et al.*, 2008).  
26

27 It is expected that these problems will increase as a consequence of climate change with increases in ambient  
28 temperature and changes in precipitation, vegetation and water availability (Russell, 2009). In the Pacific islands  
29 where the rates of diseases such as malaria and dengue fever are increasing, especially endemic dengue in Samoa,  
30 Tonga and Kiribati, other health threats as a consequence of climate change are expected to include outbreaks of  
31 cholera and ciguatera (Russell, 2009).  
32

33 In a recent review of health governance and the impact of climate change on islands of the Pacific, Lovell (2011: 50)  
34 indicates that ‘food security and access to fresh drinking water are already recognized as primary threats to the  
35 public health of many Pacific nations as saline intrusions into ground water tables is brought about by rising sea  
36 levels and increases in extreme weather events’. She also notes that many of the anticipated health effects of climate  
37 change in the Pacific are anticipated to be indirect, connected to the increased stress and declining well-being that  
38 comes with property damage, loss of economic livelihood and threatened communities and she suggests that ‘human  
39 health in the Pacific is being shaped by processes of global environmental change that extend beyond climate  
40 change’ and asks ‘whether the current funding on surveillance is intended to distinguish between the effects of  
41 human induced climate change from other sources of environmental change in order to determine international  
42 obligations’ (Lovell, 2011: 55).  
43

44 Ciguatera fish poisoning (CFP) occurs in tropical regions worldwide and, globally, is the most common non-  
45 bacterial food-borne illness associated with consumption of fish (Baden *et al.*, 1995; Ansdell, 2009). Distribution  
46 and abundance of the organisms that produce these toxins, chiefly dinoflagellates of the genus *Gambierdiscus*, are  
47 reported to correlate positively with water temperature. Consequently, there is growing concern that increasing  
48 temperatures associated with climate change could increase the incidence of CFP. One of the objectives of this study  
49 was to characterize the relationships between sea surface temperatures (SSTs) and CFP incidence rates in the  
50 Caribbean. This was done in tandem with a series of experiments designed to determine the effects of temperature  
51 on the growth rate of organisms responsible for CFP. High rates in the Lesser Antilles occur in areas which  
52 experience the warmest water temperatures and which show the least temperature variability. There are also high  
53 rates in the Pacific in Tokelau, Tuvalu, Kiribati, Cook Islands and Vanuatu.  
54

1 The influence of climatic factors on malaria vector density and parasite development is well established (Beguin *et al.*, 2011; Chaves and Koenraadt, 2010). Previous studies have assessed the potential influence of climate change on  
2 malaria, using deterministic or statistical models (Gething *et al.*, 2010; Hay *et al.*, 2006, 2009; Martens *et al.*, 1999;  
3 Parham and Michael, 2010; Pascual *et al.*, 2006). In the Caribbean, the occurrence of autochthonous malaria in non-  
4 endemic island countries in the last ten years, suggests that all of the essential malaria transmission conditions now  
5 exist, and Rawlins *et al.* (2008) call for enhanced surveillance, recognizing the possible impact of climate change on  
6 the spread of anopheles and malaria transmission.  
7

#### 8 9 10 29.3.3.4. Migration and Resettlement 11

12 Since the AR4 there has been an increase in studies of the potential displacement of people from several small island  
13 nations as a result of climate change. This is especially the case with the prospect of sea-level rise on low-lying  
14 islands and particularly the atoll nations of Kiribati, Marshall Islands, Maldives and Tuvalu which have been  
15 described as ‘sinking nations’ (Jarvis, 2010). In fact the last country, Tuvalu, has been the subject of many media  
16 reports most of which have suggested that rising sea levels will result in substantial land loss or indeed the  
17 disappearance of Tuvalu, though this has been disputed by Farbotko (2010) and Mortreux and Barnett (2009). On  
18 the other hand there is evidence for the robustness of atoll islands in the face of tsunami and tropical cyclones (e.g.,  
19 Kench *et al.*, 2008), as well as examples of some atoll islands in the Maldives accumulating during rising sea level  
20 in the mid- to late-Holocene (Kench *et al.*, 2005).  
21

22 Whether the movement of people from one location to another from climate change is an ‘impact’ or ‘adaptation’ is  
23 perhaps a theoretical matter. But in recent years a new literature has been spawned relating to climate change-  
24 migrants from small islands. Such a consequence has frequently been seen as an equity or human rights issue or ‘a  
25 moral imperative’ (Aminzadeh, 2007) that deals with the ‘biopolitics of displaced bodies’ (Bastos, 2008) and the  
26 need to provide ‘new homes for climate change exiles’ (Byravan and Rajan, 2006). It is also an issue that has  
27 important ‘security implications’ that relate not just to out-migration but to the impact on ‘recipient’ countries  
28 (Podesta and Ogdén, 2007).  
29

30 However Mortreux and Barnett (2009), in a study on Funafuti (Tuvalu) challenge the view that climate change will  
31 result in large-scale migration from Tuvalu. They show that for most people climate change is not a reason for  
32 concern, let alone a reason to migrate, and that would-be migrants do not prioritize climate change as a reason to  
33 leave the country. Indeed many small islands, including Tuvalu and Kiribati, have a long history of temporary or  
34 permanent out-migration, and some countries, for example Cape Verde, have both experience of and resilience in  
35 the migration tradition (Akesson, 2008).  
36

37 A related argument, put forward by Rasmussen *et al.* (2009) with regard to Polynesian outlier islands in Melanesia  
38 (Solomon Islands) is that migration has occurred in the past due to various factors, and that in the future climate  
39 change factors will be difficult to disentangle from other reasons for resettlement. Populations from outlying islands  
40 constantly move to the larger islands and centers for a host of reasons including the breakdown of the traditional  
41 population control mechanisms, the search for jobs and health care. Whether climate change could be identified as  
42 an independent factor in such movements is doubtful (Rasmussen *et al.*, 2009, 2011).  
43  
44

#### 45 **29.4. Projected Integrated Climate Change Impacts** 46

47 Small islands face many challenges in using climate change projections for policy development and decision-  
48 making. Primary among these is the absence of credible regional socio-economic scenarios relevant at the scale at  
49 which most decisions are taken. Scenarios are an important tool to help decision makers disaggregate vulnerability  
50 to the direct physical impacts of the climate signal from the vulnerability associated with socio-economic conditions  
51 and governance. Before building socio-economic scenarios to aid decision making, there has to be scientifically  
52 credible simulation of future small island climates. In this regard, there is a serious problem in generating climate  
53 scenarios at the scale of small islands since they are generally much smaller than the resolution of the global models.  
54 This is because the grid squares in the Global Circulation Models used in the SRES scenarios used over the last

1 decade, were between 200 and 600 km<sup>2</sup>, which provides inadequate resolution over the land areas of virtually all  
2 small islands. The scale problem has been usually addressed by the implementation of statistical downscaling  
3 models that relate the GCM output to the historical climate of a local small island data point. The limitation of this  
4 approach is the need for observed data ideally for at least three decades for a number of representative points on the  
5 island, in order to establish the statistical relationships between the GCM data and the observations. In most small  
6 islands long term quality controlled climate data is generally sparse, however where adequate local data is available  
7 for several stations for at least 30 years, downscaling techniques have demonstrated that they can respond to the  
8 guidance of the GCMs to closely match the local domain and that they require less computational demand (e.g.  
9 Charlery and Nurse, 2011). Even so, most projected changes in climate for the Caribbean, Pacific, Indian Ocean and  
10 Mediterranean Islands, generally apply to the regions as a whole and not specific countries.

#### 11 12 13 **29.4.1. Projected Impacts for Islands based on Existing SRES Scenarios** 14

15 The broad synthesis in the AR4 of climate scenario projections and impacts on small island regions and projected  
16 impacts from AR4 (e.g. Mimura *et al.*, 2007) remains valid. For example, Table 29-1 shows that in general for the  
17 SRES A1B more balanced medium emissions scenario, the projections suggest about a 2°C increase in temperature  
18 in the Caribbean, Indian Ocean and Pacific Ocean small islands regions by 2100 with an overall annual decrease in  
19 precipitation of about 12% in the Caribbean and a 3-5% increase in the Indian and Pacific Oceans small island  
20 regions.

21  
22 [INSERT TABLE 29-1 HERE

23 Table 29-1: Small islands' regions temperature and precipitation change projections for the SRES A1B scenario  
24 over the period 1980-1999 compared to 2080-2099. The table shows the minimum, median (50%) and maximum  
25 values of the mean temperature and precipitation responses from each of the 21 AR4 global models (Adapted from  
26 Table 11.1 in AR4 WG1).]  
27

28 In the five main regions in which most tropical or sub-tropical small island developing states are located, there are  
29 only a handful of independent peer reviewed scientific publications providing downscaled climate data projections,  
30 and virtually none illustrating the experience gained from their use for policy making. We note though the existence  
31 of several national reports and consultancies sponsored by donor agencies, however these do not generally pass the  
32 test of independent peer review so we decline to quote them here. A projected 2°C temperature increase by the year  
33 2100 has potential far reaching consequences for sentinel ecosystems such as coral reefs that are important to  
34 tropical islands. This is because 'Degree Heating Months' (DHM) >2 °C-month are the determined threshold for  
35 severe coral bleaching (Donner, 2009). For example Donner (2009) in a study of sea surface temperature (SST)  
36 across all coral reef regions using CM 2.0 and CM 2.1 GCM ensemble projections forced with five different SRES  
37 future emissions scenarios, concluded that even warming in the future from the current accumulation of greenhouse  
38 gases in the atmosphere could cause over half of the world's coral reefs to experience harmfully frequent thermal  
39 stress by 2080. Further, this timeline could be brought forward to as early as 2030 under the A1B medium emissions  
40 scenario. He further states that thermal adaptation of 1.5 °C would only delay the thermal stress forecast by 50–80  
41 years. Donner (2009) also estimated the year of likelihood of a severe mass coral bleaching event due more than  
42 once every 5 years, to be 2074 in the Caribbean, 2074 in the western Indian Ocean, 2082 in the central Indian  
43 Ocean, 2065 in Micronesia, 2057 in the central Pacific, 2094 in Polynesia and 2073 in the eastern Pacific small  
44 islands regions.

45  
46 Small island economies can also be objectively shown to be at greater risk from sea-level rise in comparison to other  
47 geographic areas. Such a study is the use of the FUND model to assess the economic impact of substantial sea-level  
48 rise in a range of socio-economic scenarios downscaled to the national level, including the four SRES storylines  
49 (Anthoff *et al.*, 2010). Although this study shows that in magnitude, a few regions experience most of the costs of  
50 sea-level rise by 2100, especially East Asia, North America, Europe and South Asia, these same results when  
51 expressed as percent of GDP show that most of the top ten and four of the top five most impacted are small islands  
52 from the Pacific (Micronesia, Palau, Marshall islands, Nauru) and Caribbean (Bahamas) (Anthoff *et al.*, 2010). The  
53 point is made that the damage costs for these small island states are enormous in relation to the size of their

1 economies (Nicholls and Tol 2006) and that together with deltaic areas they will find it most difficult to raise the  
2 finances necessary to implement protection (Anthoff *et al.*, 2010).

3  
4 In the Caribbean, downscaled climate projections have been generated for some Caribbean islands using the Hadley  
5 Centre PRECIS regional model (Taylor *et al.*, 2007, Stephenson *et al.*, 2008). For the SRES A2 and B2 scenarios  
6 the PRECIS regional climate model projects an increase in temperature across the Caribbean of 1–4 °C with  
7 increasing rainfall during the latter part of the wet season from November–January, in the northern Caribbean (i.e.  
8 north of 22°N) and drier conditions in the southern Caribbean with a strong tendency to drying in the traditional wet  
9 season from June–October (Whyte *et al.*, 2008, Campbell *et al.*, 2010, Taylor *et al.*, 2011, Taylor *et al.*, 2012).  
10 Projected lengthening seasonal dry periods, and increasing frequency of drought periods are expected to increase  
11 demand for water throughout the region under the SRES A1B scenario (Cashman *et al.*, 2010). Decrease in crop  
12 yield is also projected in Puerto Rico for the SRES B1 (low), A2 (mid-high) and A1F1 scenarios during September  
13 although increased crop yield is suggested during February (Harmsen *et al.*, 2009). Using a tourism demand model  
14 linked to the SRES A1F1 A2 B1 and B2 scenarios, the projected climate change heating and drying impacts are also  
15 linked to potential aesthetic, physical and thermal effects that are estimated to cause a change in total regional tourist  
16 expenditure of about +321, +356, -118 and -146 million US dollars from the least to the most severe emissions  
17 scenario respectively (Moore, 2010).

18  
19 In the Indian Ocean, representative downscaled projections have been generated for Australia’s two Indian Ocean  
20 territories the Cocos (Keeling) Islands and Christmas Island using the CSIRO Mark 3.0 climate model with the  
21 SRES A2 scenario which implies a reduction of the greenhouse gases emissions in a more economic and regional  
22 world (Maunsell, 2009). Future climate change projections for the two islands for 2030 and 2070 include  
23 quantitative estimates of air and sea temperature increases and sea-level rise as well as estimates of the intensity,  
24 frequency and distribution of tropical cyclones and storms.

25  
26 In the tropical Pacific Ocean, a comprehensive assessment of the vulnerability of the fisheries and aquaculture  
27 sectors to climate change in 22 Pacific island countries and territories focussed on two future time-frames (2030 and  
28 2100) and two SRES emissions scenarios, B1 (low emissions) and A2 (high emissions) (Bell *et al.*, 2011). The  
29 results are not very different from the IPCC AR4 projections with projected temperature increases of about +1.0 to  
30 1.5 °C by 2100 and an increase in rainfall of 10-20% in equatorial regions. Estimates of the resulting projected  
31 changes in habitat area (mangroves, seagrasses, freshwater fish) coral reef cover, demersal fish production, skipjack  
32 and bigeye tuna for the two SRES scenarios are given in Table 29-2.

33  
34 [INSERT TABLE 29-2 HERE

35 Table 29-2: Projected percentage change in key marine natural habitat or resources in 22 tropical Pacific small  
36 islands under the SRES B1 and A2 scenarios (adapted from Bell *et al.*, 2011).]

37  
38 Most anticipated changes in habitat and resource availability such as the commercial tuna catch are negative, with  
39 implications for government revenue and island food security (Bell *et al.*, 2011).

40  
41 In the Mediterranean Sea islands of Mallorca, Corsica, Sardinia, Crete and Lesvos, Gritti *et al.* (2006) simulated the  
42 vegetation biogeography and distribution dynamics under the SRES A1F1 and B1 scenarios. The simulations  
43 indicate that the effects of climate change are expected to be negligible within most ecosystems except for  
44 mountainous areas that are projected to be eventually occupied by exotic vegetation types from warmer, drier  
45 conditions. Cruz *et al.* (2009) also report similar results for the terrestrial ecosystems of Madeira Island in the  
46 Mediterranean. Downscaled SRES A2 and B2 scenarios for the periods 2040 – 2069 and 2070 – 2099 suggest that  
47 the higher altitude native humid forest called the Laurissilva, may expand upwards in altitude, which could lead to a  
48 severe reduction of the heath woodland which because it has little upward area to shift may reduce in range or  
49 disappear at high altitudes resulting in the loss of rare and endemic species within this ecosystem.



#### 29.4.2. *New RCP Projections and Implications for Small Islands of GMST <2.0 Degrees*

Utilizing updated historical greenhouse gas emissions data, the scientific community has produced future projections for four plausible new global Representative Concentration Pathways (RCPs) in order to explore a range of global climate signals up to the year 2100 and beyond (e.g. Moss *et al.*, 2010; van Vuuren *et al.*, 2010). The RCPs are named according to their global warming potential (e.g. RCP 4.5 W/m<sup>2</sup>) and are matched to a global socio-economic scenario storyline. Scientists have strongly cautioned against the specification of detailed sub-global conditions and trends (regional/local) based on these coarser global datasets and models. With these caveats in mind, typical representations of RCP projections for temperature and precipitation for similar times of the year in some small island regions are presented in Figure 29-2 adapted from Annex I WGI AR5. Highlighted in Figure 29-2 is the output of one model, that is the mid-projection representation of each RCP model ensemble. A more comprehensive compilation of global RCP projections can be found in Annex I of the WGI AR5 Report.

[INSERT FIGURE 29-2 HERE

Figure 29-2: RCP Scenario projections to the year 2100 for the four main small island regions (Adapted from AR5 WG1, Annex 1).]

Small Island Developing States (SIDS) have advocated that the Global Mean Surface Temperature (GMST) increase should be limited to no more than 1.5°C by the year 2100. Inspection of column 1 in Figure 29-2 suggests that for Caribbean, Indian Ocean and Pacific SIDS in the tropics, that is only likely under RCP 2.6 which in each case yields about a 1°C regional increase by 2100. RCP 2.6 also suggests no significant change in mean rainfall in the Caribbean with a slight increase for Indian and Pacific Ocean SIDS. In the mid-latitude Mediterranean Sea region RCP 2.6 yields about a 2°C increase in temperature by 2100 and no apparent change in rainfall.

By comparison with regard to temperature, RCP 4.5 in Figure 29-2 suggest a likely less than 2°C but not less than 1.5°C temperature increase in Caribbean, Indian Ocean and Pacific SIDS by 2100 and about a 3°C increase in the Mediterranean. Associated with this, the Caribbean and Mediterranean regions are likely to experience a decrease in mean rainfall while the Indian and Pacific Ocean SIDS are likely to experience increased rainfall. These trends accelerate moderately for RCP 8.0 and steeply for RCP 8.5.

The implications of these preliminary findings are that only scenarios associated with RCP 2.6 W/m<sup>2</sup> are likely to meet the SIDS demand to limit global mean surface temperature (GMST) to <2°C by 2100 but a further secondary target of RCP 4.5 W/m<sup>2</sup> is likely to limit GMST to <2°C in the tropical SIDS regions as well. According to Ranger *et al.* (2012) mitigation scenarios with a 50 per cent chance of achieving the 1.5°C goal with a temporary overshoot of no more than 50 years must have “strong reductions in emissions, with global emissions peaking in 2015 and falling to at most 44–48 GtCO<sub>2</sub>e in 2020; rapid reductions in annual global emissions after 2020 (of at least 3–4% per year); very low annual global emissions by 2100 (less than 2–4 GtCO<sub>2</sub>e) and falling to zero (or below) in the 22nd century”. Ranger *et al.* (2012) further conclude that the proposed date of review of the 1.5°C goal, set at 2015 by the Ad Hoc Working Group on Long-term Cooperative Action under the Convention from the 16th session of the Conference of the Parties (COP16), may be too late to achieve the necessary scaling up of emissions cuts to achieve this goal.

#### 29.5. **Inter- and Intra-Regional Transboundary Impacts**

Many impacts on small islands are generated from another region or continent well beyond the borders of an individual nation or island. Some transboundary processes may have positive effects on the receiving small island or nation, though most that are reported have negative impacts. Deciphering a climate change signal in inter- and intra-regional transboundary impacts on small islands is not easy and usually involves a chain of linkages tracing back from island-impact to a distant climate or climate-related bio-physical or human process. Some examples are given below.

### 29.5.1. Physical Events and Impacts

#### 29.5.1.1. Large Ocean Waves from Distant Sources

Unusually large deep ocean swells, generated from far distant sources in the mid- and high-latitudes cause considerable damage on the coasts of small islands thousands of kilometers away in the tropics. Impacts include sea-flooding and inundation of settlements, infrastructure and tourism facilities as well as severe erosion of beaches. Examples from small islands in the Pacific and Caribbean are common though perhaps the most significant instance, in terms of a harbinger of climate change and sea-level rise, occurred in the Maldives in April 1987 when long period swells originating from the Southern Ocean some 6000 km away caused major flooding, damage to property, destruction of sea defences and erosion of reclaimed land and islands. (Harangozo, 1992). The Maldives and several other island groups in the Indian Ocean have been subject to similar ocean swell events more recently, most notably in May 2007 (Department of Meteorology, 2007).

In the Caribbean northerly swells affecting the coasts of islands have been recognized as a significant coastal hazard ever since the 1950s (Donn and McGuinness, 1959). They cause considerable seasonal damage to beaches, marine ecosystems and coastal infrastructure throughout the Caribbean (Cambers, 2009; Bush *et al.*, 2009). These high-energy events manifest themselves as long period, high-amplitude waves generated by extra-tropical cyclones and high latitude lows originating thousands of kilometers away in the North Atlantic. They occur during the northern hemisphere winter and often impact the normally sheltered, low-energy leeward coasts of the islands (Bush *et al.*, 2009; Cambers, 2009). Such swells have even reached the shores of Guyana on the South American mainland as illustrated by a swell event in October 2005 that caused widespread flooding and overtopping and destruction of sea defences (van Ledden *et al.*, 2009). Distant origin swells differ from the ‘normal’ wave climate conditions experienced in the Caribbean, particularly with respect to direction of wave approach, wave height and periodicity. Based on statistical analysis of wave data from voluntary observer ships (VOS), Gulev and Grigorieva (2006) suggest that significant wave heights have increased by between 10 – 40 cm/decade in both the North Atlantic and North Pacific, during the period 1958-2002.

Swells of similar origin and characteristics are also known to occur in the North Pacific. This is exemplified by the case of Oahu Island, Hawaii, where there is documented evidence of damage to coral growth by northerly swell, especially during years with a strong El Nino signal (Fletcher *et al.*, 2008). Whereas the origin of the long period ocean swells that impact small islands in the tropical regions come from the mid-and high-latitudes in the Pacific, Indian and Atlantic oceans, there are also instances of unusually large waves generated from tropical cyclones that spread into the mid- and high- latitudes. One example occurred during 1999 when tide gauges at Ascension and St. Helena Islands in the central south Atlantic recorded unusually large deep-ocean swell generated from distant Hurricane Irene (Vassie *et al.*, (2004). The impacts of increasing incidence or severity of storms or cyclones is generally considered from the perspective of direct landfall of such systems whereas these instances All of these instances serve to show ‘the potential importance of swells to communities on distant, low-lying coasts, particularly if the climatology of swells is modified under future climate change’ (Vassie *et al.*, 2004: 1095).

#### 29.5.1.2. Trans-Continental Dust Clouds and their Impact

The transport of Saharan dust across the Atlantic and into the Caribbean has engaged the attention of researchers for some time. The resulting dust clouds are known to transport pollen, microbes, insects, bacteria, fungal spores and various chemicals (Prospero *et al.*, 2005; Griffin, 2007; Middleton *et al.*, 2008; Monteil, 2008). During major events, dust concentrations can exceed 100  $\mu\text{g m}^{-3}$  (Prospero, 2006; Griffin, 2007). Various independent studies using different methodologies have all found a strong positive correlation between dust levels in the Caribbean and periods of drought in the Sahara, while concentrations show a marked decrease during periods of higher rainfall. Consequently, it is argued that higher dust emissions due to increasing aridity in the Sahel and other arid areas could enhance climate effects over large areas, including the eastern Caribbean and the Mediterranean (Prospero and Lamb, 2003; Santese *et al.*, 2009). Similar findings have been reported at Cape Verde where dust emission levels were found to be a factor of nine lower during the decade of the 1950s when rainfall was at or above normal, when compared to the 1980s, a period of intense drought in the Sahel region (Nicoll *et al.*, 2011). Dust from the Sahara

1 has also long been known to reach into the eastern Mediterranean (e.g., Santese *et al.*, 2010) whilst dust from Asia  
2 has been transported across the Pacific and Atlantic oceans and around the world (Uno *et al.*, 2009).

3  
4 There is evidence that the trans-boundary movement of Saharan dust into the island regions of the Caribbean,  
5 Pacific and Mediterranean is associated with various human health diseases including asthma admissions in the  
6 Caribbean (Monteil, 2008; Monteil and Antoine, 2009; Prospero *et al.*, 2008), cardiovascular morbidity in Cyprus in  
7 the Mediterranean (Middleton *et al.*, 2008) and is found to be a risk factor in respiratory and obstructive pulmonary  
8 disease in the Cape Verde islands (Martins *et al.*, 2009). These findings underscore the need for further research into  
9 the link between climate change, airborne aerosols and human health in localities, such as oceanic islands far distant  
10 from the continental source of the particulates.

### 11 12 13 **29.5.2. Movement and Impact of Introduced and Invasive Species across Boundaries**

14  
15 Invasive species are colonizer species that establish populations outside their normal distribution ranges and spread  
16 into natural or local areas. The spread of invasive alien species is regarded as a significant trans-boundary threat to  
17 the health of biodiversity and ecosystems, and has emerged as a major factor in species decline, extinction and loss  
18 of biodiversity goods and services worldwide. This is particularly true of islands, where both endemism and  
19 vulnerability to introduced species tend to be high (Kenis *et al.*, 2008; Reaser *et al.*, 2007; Westphal *et al.*, 2008;  
20 Rocha *et al.*, 2009; Kueffer *et al.*, 2010). The extent to which alien invasive species successfully establish  
21 themselves at new locations in a changing climate will be dependent on many variables, but non-climate factors  
22 such as ease of access to migration pathways, suitability of the destination, ability to compete and adapt to new  
23 environments, and susceptibility to invasion of host ecosystems are deemed to be critical. This is borne out for  
24 example by Le Roux *et al.* (2008) who studied the effect of the invasive weed *Miconia calvescens* in New  
25 Caledonia, Society Islands and Marquesas islands, by Gillespie and Pau (2008) in an analysis of the spread of  
26 *Leucaena leucocephala*, *Miconia calvescens*, *Psidium sp.* and *Schinus terebinthifolius* in the Hawaii islands, and by  
27 Christenhusz and Toivonen (2008) whose work shows the potential for rapid spread and establishment of the  
28 oriental vessel fern, *Angiopteris evecta*, from the South Pacific throughout the tropics. Mutualism between an  
29 invasive ant and locally honeydew-producing insects has been strongly associated with damage to the native and  
30 functionally important tree species, *Pisonia grandis* on Cousine island, Seychelles (Gaigher, *et al.*, 2011).

31  
32 Whilst invasive alien species constitute a major threat to biodiversity in small islands, the removal of such species  
33 can result in recovery of that condition. This has been demonstrated in Mauritius where some forested areas were  
34 weeded of alien plants and after a decade species richness and abundance of seedlings was higher compared to the  
35 adjacent non-weeded native forest. Baider and Florens (2011) found that several species that were presumed extinct  
36 or critically threatened had recovered dramatically as a result of the removal of the alien invaders. They concluded,  
37 given the severity of alien plant invasion in Mauritius, that their example can 'be seen as a relevant model for a  
38 whole swath of other island nations and territories around the world particularly in the Pacific and Indian Oceans'  
39 (Baider and Florens, 2011).

40  
41 The movement of aquatic and terrestrial invasive fauna within and across regions will almost certainly exacerbate  
42 the threat posed by climate change in island regions, and could impose significant environmental, economic and  
43 social costs. Englund (2008) has documented the negative effects of invasive species on native aquatic insects on  
44 Hawai'i and French Polynesia, and their potential role in the extirpation of native aquatic invertebrates in the  
45 Pacific. Similarly, there is evidence that on the island of Oahu introduced slugs appear to be 'skewing species  
46 abundance in favour of certain non-native and native plants', by altering the 'rank order of seedling survival rates',  
47 thereby undermining the ability of preferred species (e.g. the endangered *C. Superba*) to compete effectively (Joe  
48 and Daehler, 2008).

### 49 50 51 **29.5.3. Spread of Aquatic Pathogens within Island Regions**

52  
53 The mass mortality of the black sea urchin, *Diadema antillarum*, in the Caribbean Basin during the early 1980s  
54 demonstrates the ease with which ecological threats in one part of a region can be disseminated to other jurisdictions

1 thousands of kilometres away. The die-off was first observed in the waters off Panama around January 1983, and  
2 within 13 months the disease epidemic had spread rapidly through the Caribbean Sea affecting practically all island  
3 reefs, as far away as Tobago some 2000 km to the south and Bermuda, some 4000 km to the east. The diadema  
4 population in the wider Caribbean declined between 90-95 per cent as a consequence of this single episode (Lessios,  
5 1988, 1995; Lessios *et al.*, 1984; Rotjan and Lewis, 2008; Alvarez-Filip *et al.*, 2009; Croquer and Weil, 2009a,  
6 2009b). As *D. antillarum* is one of the principal grazers that removes macroalgae from reefs and thus promotes  
7 juvenile coral recruitment, the collateral damage was severe, as the region's corals suffered from high morbidity and  
8 mortality for decades thereafter (Carpenter and Edmunds, 2006; Myhre and Acevedo-Gutierrez, 2007; Idjadi *et al.*,  
9 2010).

10  
11 There are other climate-sensitive diseases such as yellow, white and black band, white plague and white pox that  
12 travel across national boundaries and infect coral reefs directly. This is variously supported by examples from the  
13 Indo-Pacific relating to the role of bacterial infections in white syndrome and yellow band disease (Piskorska *et al.*,  
14 2007; Cervino *et al.*, 2008), the impact of microbial pathogens as stressors on benthic communities in the  
15 Mediterranean associated with warming seawater (Ainsworth *et al.*, 2007; Danovaro *et al.*, 2009; Rosenberg *et al.*,  
16 2009), and an increasing evidence of white, yellow and black band disease associated with Caribbean and Atlantic  
17 reefs (Rosenberg *et al.*, 2009; Cervino *et al.*, 2008; Brandt and McManus, 2009; Croquer and Weil, 2009a, 2009b;  
18 Miller *et al.*, 2009; Weil and Croquer, 2009; McClanahan *et al.*, 2009; Weil and Rogers, 2011).

#### 21 **29.5.4. Transboundary Movements and Human Health**

22  
23 For island communities the trans-boundary implications of existing and future human health challenges are  
24 projected to increase in a changing climate. For instance, the aggressive spread of the invasive giant African snail,  
25 *Achatina fulica*, throughout the Caribbean, Indo-Pacific islands and Hawaii is not only assessed to be a severe threat  
26 to native snails and other fauna (e.g. native gastropods), flora and crop agriculture, but is also identified as a vector  
27 for certain human diseases such as meningitis (Reaser *et al.*, 2007; Meyer *et al.*, 2008; Thiengo *et al.*, 2010).

28  
29 Like other aquatic pathogens ciguatoxins, which cause ciguatera fish poisoning, may be readily dispersed by  
30 currents across and within boundaries in tropical and sub-tropical waters. Ciguatoxins are known to be highly  
31 temperature-sensitive and may flourish when certain sea water temperature thresholds are reached, as has been noted  
32 in the South Pacific (Llewellyn, 2010), Cook Islands (Rongo and van Woesik, 2011), Kiribati (Chan *et al.*, 2011),  
33 the Caribbean and Atlantic (Morrison *et al.*, 2008; Otero *et al.*, 2010; Tester *et al.*, 2010) and Mediterranean  
34 (Aligizaki and Nikolaidis, 2008). (See also 29.3.3.3).

### 37 **29.6. Adaptation and Management of Risks**

#### 39 **29.6.1. Addressing Current Vulnerabilities and Adaptation Gaps**

40  
41 Significant references are made in the literature to the vulnerability of small islands to climate change, the high costs  
42 of adapting in small islands, and the potential need for migration from small islands (Nicholls *et al.*, 2011, Gemenne,  
43 2011, Biermann and Boas, 2010). Yet islands are heterogeneous in geomorphology, culture, ecosystems, populations  
44 and vulnerability to climate change. Vulnerabilities and adaptation needs are as diverse as the variety of islands  
45 between regions and even within nation states (such as the Solomon Islands, see for example Rasmussen *et al.*,  
46 2011).

47  
48 Attempts have been made to assess the differing levels of vulnerability and to identify the adaptation gaps through  
49 national level vulnerability indices, such as indicators of climate impacts and vulnerability (Maplecroft, 2012,  
50 DARA and the Climate Vulnerable Forum, 2010); indicators of disaster risk (Peduzzi *et al.*, 2009); indicators of  
51 environmental sustainability (Esty *et al.*, 2005), of quality of life (Prescott-Allen, 2001, UNDP, 2011), and of  
52 vulnerability (Adger *et al.*, 2004, Cardona, 2007, Barr *et al.*, 2010). Many of these indicators suffer from lack of data  
53 (e.g. Peduzzi *et al.*, 2009) and generic indicators that are not relevant in all islands (Barnett and Campbell, 2010).  
54 Depending on the index used, the same islands can be shown to be both vulnerable and resilient. For example,

1 according to Maplecroft (2012) Haiti is the second-most vulnerable country to climate change; according to Esty *et*  
2 *al.* (2005) Haiti is the sixth least environmentally sustainable country. Yet Haiti does not appear in the list of the 20  
3 most vulnerable countries according to Barr *et al.* (2010), nor does it rank among the 20 least developed countries of  
4 the 2011 Human Development Index (UNDP, 2011). Each indicator clearly reveals different stresses on island  
5 systems, yet none provides a complete picture of island vulnerability.  
6

7 Indices of vulnerability to climate change can provide only limited evidence of inter-island vulnerability (Barnett *et*  
8 *al.*, 2008), despite attempts to compare between islands (see for example Park *et al.*, 2012). In short, the presence or  
9 absence of vulnerability and resilience in small islands cannot be determined using existing vulnerability indicators  
10 alone.  
11

12 Instead of relying on index-based scores to assess island vulnerability, adaptation gaps on islands could be  
13 determined through consideration of the civilisation-nature stresses (or syndromes) that islands experience. Petschel-  
14 Held *et al.* (1999) argue that there are three major patterns: utilisation syndromes (which relate to production);  
15 development syndromes (relating to the quest for economic growth) and sink syndromes (relating to the deposit of  
16 civilisations' waste). The presence of each of these syndromes implies a greater vulnerability to any environmental  
17 stress – including climate change. Within the island context several of the original syndromes developed by Newton  
18 *et al.* (2012), are relevant, see Table 29-3.  
19

20 [INSERT TABLE 29-3 HERE

21 Table 29-3: Examples of syndromes affecting islands' vulnerability to climate change.]  
22

23 Where multiple human-environment pressures already exist, addressing those may be the first step to address the  
24 adaptation gap. For example, with coral reef ecosystems – those already under stress from non-climate factors are  
25 more at risk from climate change than those that are unstressed (Maina *et al.*, 2011, Hughes *et al.*, 2003). The same  
26 argument appears to be true at the island scale: in Majuro (Marshall Islands), evidence from 34-37 years of aerial  
27 photography shows that rural areas are experiencing lower rates of erosion than urban areas, suggesting that human  
28 activity in coastal areas and interventions in coastal ecosystems are exacerbating erosion associated with sea level  
29 rise (Ford, 2012). Islands faced with multiple stressors can therefore be assumed to be more at risk from climate  
30 impacts. Recognizing the spectrum of syndromes faced on different islands is one means of assessing the adaptation  
31 gaps that exist for each unique island.  
32

33 Following Smit *et al.* (2000), and Brooks *et al.* (2005), Barnett and Campbell (2010) reinforce the point that island  
34 vulnerability to climate change is often a function of four non-climate stressors: socio-economic, geo-physical, and  
35 socio-ecological vulnerabilities, as well as the climate stressor. Socio-economic vulnerabilities could be related to  
36 on-going challenges of managing urbanisation, pollution and sanitation, for example in Kiribati (Storey and Hunter,  
37 2010). Geo-physical characteristics of islands are varied, some low-lying atolls, some oceanic, some volcanic  
38 islands – each of which creates different pre-existing vulnerabilities, for example the Azores (Portugal) face seismic,  
39 landslide and tsunami risks (Coutinho *et al.*, 2009). Socio-ecological stresses, such as habitat loss and degradation,  
40 invasive species, overexploitation, pollution, and disease are key features in vulnerability (see for example Caujape-  
41 Castells *et al.*, 2010, Kingsford *et al.*, 2009, Sax and Gaines, 2008). It is on top of these unique stresses that climate  
42 change exerts its impact, so that each of these non-climate vulnerabilities needs to be considered to fully understand  
43 the complete picture of island vulnerability to climate change (Rasmussen *et al.*, 2011). To illustrate this issue,  
44 Figure 29-3 depicts the severity of the syndromes described in Table 29-3, in four hypothetical island types.  
45

46 [INSERT FIGURE 29-3 HERE

47 Figure 29-3: Multiple pressures on islands exacerbating island vulnerability to climate change.]  
48

49 Figure 29-3 simply illustrates the degree of exposure to a spectrum of syndromes that islands could face. Four  
50 generic island types (a, b, c, and d) are suggested for illustrative purposes. Island type 'a' is likely to be remote, with  
51 little tourism, over-exploited natural resources e.g. fisheries or land based resources, and with a growing waste  
52 disposal problem. Island type 'b' has embraced mass tourism, is increasingly depleting its stocks of natural capital,  
53 and is facing growing problems with coastal squeeze. Island type 'c' is likely to be a low-lying island with limited  
54 land mass. These island types may have pursued mass tourism creating severe waste management problems and

1 growing resource degradation as well as high levels of pressure on land. Island type ‘d’ is likely to be a larger island  
2 with an expanding tourism sector, but weak systems in place to manage its waste. The greater the area covered by  
3 the polygon in Figure 29-3 the greater the risks to that island from climate change.  
4  
5

### 6 **29.6.2. Practical Experiences of Adaptation**

7

8 Despite the often-made assumption that islands are vulnerable to climate change, islands and islanders are also  
9 recognized for their long experience of adapting to weather variability and climate hazards and for their resilience in  
10 the face of meteor-hydrological hazards (Barnett, 2001). Experiences of effective adaptation are increasingly being  
11 documented, these include: building adaptive capacity; developing novel mechanisms for managing risks; working  
12 collectively; and finding ways to address long term socio-ecological changes.  
13  
14

#### 15 *29.6.2.1. Building Adaptive Capacity (using Traditional Knowledge, Linking Science with Community Use,* 16 *Technologies)*

17

18 As in previous IPCC Assessments, there is continuing strong support for the incorporation of indigenous knowledge  
19 into adaptation planning. For example, Samoans have their own seasonal calendar based on observations of local  
20 environmental and weather changes. Their ability to forecast the onset of extreme weather and climate events  
21 relying predominantly on local environmental changes are tools that could be incorporated in the formulation of  
22 climate change adaptation strategies (Lefale, 2010). The point is underscored by one analyst, who suggests that the  
23 vulnerability of indigenous groups in small islands cannot be effectively tackled unless indigenous and Western  
24 knowledge are combined in ‘a culturally compatible and sustainable manner’ (Mercer et al., 2007: 245). This view  
25 converges with that of Gamble *et al.* (2010), who in a study involving sixty farmers in St. Elizabeth Parish, Jamaica,  
26 report a high level of agreement between the farmers’ perception of increasing drought incidence and statistical  
27 analysis of precipitation and vegetation data for the area. In this case the farmers perceptions clearly validated the  
28 observational data and vice versa.  
29

30 There is a growing awareness of the role of traditional technologies and skills for climate adaptation. Examples of  
31 traditional practices that are supporting adaptation in the Solomon Islands are documented in Rasmussen *et al.*  
32 (2009). These include: the traditional practice of elevating concrete floors on Ontong Java to keep floors dry during  
33 heavy rainfall events; building ‘low, aerodynamic houses and sago palm leaves as roofing material on Tikopia in  
34 order to avoid hazards from flying debris such as metal roofs’ as preparedness for tropical cyclones; and in Bellona  
35 local perceptions are that houses constructed from modern materials and practices are more easily destroyed by  
36 tropical cyclones, implying that traditional construction methods are perceived to be more resilient in the face of  
37 extreme weather (Rasmussen *et al.*, 2009: 10).  
38

39 As is increasingly recognized, frequency of exposure to major hazards appears to contribute to island adaptive  
40 capacity. In both the Solomon Islands and the Cayman Islands there is evidence that communities that frequently  
41 face, and recover from, hazards have a greater sense of their own resilience to hazards and potentially climate  
42 change (Schwarz *et al.*, 2011, Tompkins *et al.*, 2009). There is reasonable agreement about the factors that underpin  
43 this resilience to hazards that resonate with earlier work on successful governance of the commons i.e.: community  
44 cohesion, effective leadership, and community buy-in to collective action (Schwarz *et al.*, 2011, Tompkins *et al.*,  
45 2008). All of these studies reinforce the earlier work of Barnett (2001), and suggest that supporting community-led  
46 approaches to disaster risk reduction and hazard management may contribute to greater community engagement  
47 with anticipatory adaptation.  
48

49 Social organization is a key element of this capacity. Two discrete studies from the Solomon Islands highlight the  
50 importance of social organization within communities to support effective adaptation to climate change. Using 50  
51 years of satellite imagery and aerial images, combined with household surveys in Bellona, Solomon Islands, cultural  
52 bonds have been found to play a central role in delivering adaptive management strategies for past extreme events  
53 (Reenberg *et al.*, 2008). In Tikopia, Solomon Islands, Mertz *et al.* (2010) compared island food security in 2010  
54 with studies undertaken in 1939 and 1982. They concluded that the system of zero external input agriculture has

1 proven sustainable, as agricultural systems are able to cope effectively with extreme events (notably Cyclone Zoe in  
2 1972). In both Tikopia and Bellona, the strategy of relying on traditional systems of organization for farming and  
3 land use management have been shown to work effectively – largely as there has been little cultural and  
4 demographic change.

5  
6 Traditional systems appear less effective when multiple civilization-nature stresses are introduced. For example in  
7 the island of Makira, Solomon Islands, where there have been high levels of population growth and changing social  
8 objectives, these factors appear to have acted as inhibitors of adaptation (Fazey *et al.*, 2011). The importance of  
9 taking into account local interests and traditional knowledge in adaptation in small islands is emphasized by Kelman  
10 and West (2009) and McNamara and Westoby (2011), yet there also needs to be recognition of its limits, such as in  
11 the context of rapid socio-ecological change.

12  
13 Recent empirical observations from a variety of Pacific Islands have shown that perceptions of self-efficacy in  
14 addressing climate stress are an important pre-condition for anticipatory adaptation in islands. In their study of  
15 adaptation to water stress on Kiribati. Kuruppu and Liverman (2011) found that individuals' belief in their own  
16 ability to cope with water scarcity, largely based on past experience, appears to be a key driver in I-Kiribati attitudes  
17 to and choice of adaptation strategy. The resilience of islanders can also be seen in unusual examples of innovation  
18 in managing the changing climate. Islanders have long experience of optimising land to secure development gains  
19 and even of island building, and there is evidence from the Pacific that innovation based on traditional practices,  
20 such as the creation of artificial islands from ocean waste, may provide new opportunities for islands.

21  
22 Despite this set of examples, there remains limited understanding of how traditional knowledge, technologies and  
23 skills are being used to support adaptation. To date research in the Pacific and Caribbean dominates small island  
24 climate change work. There is a great need for more detailed studies on small islands in the central and western  
25 Indian Ocean and the central eastern Atlantic.

#### 26 27 28 29.6.2.2. Addressing Risks

29  
30 Options for risk management on islands are influenced by the socio-ecological and geophysical vulnerabilities of  
31 islands, as well as the size of the risks faced relative to the set of response options that are available to islanders, and  
32 the control the islanders have over the risks (Briguglio, 2010).

33  
34 Risk transfer can be undertaken through insurance, risk spreading through access to and use of common property  
35 resources, livelihood diversification, or mutual support through networks, and risk avoidance through migration.  
36 Insurance markets do not necessarily function as effectively in small locations as they do in larger locations, in part  
37 due to a small demand for insurance products. For example in the case of insurance for the food sector, following a  
38 survey of farmers, processors, retailers, government including extension officers on Grenada, Jamaica, Fiji and  
39 Vanuatu, researchers found that a lack of demand for insurance products means that there is an undersupply of  
40 customized food insurance products, which in turn contributes to further the lack of demand (Angelucci and  
41 Conforti, 2010). Despite our knowledge of the risk of moral hazard from the presence of insurance (whereby the  
42 insured under-invest in risk mitigating activities as they know they will be financially recompensed for any losses),  
43 researchers have recently suggested that hazard insurance could actively create maladaptation on islands. McNamara  
44 and Werner (2008) numerically model coastal dynamics for barrier island systems (such as the developed barrier  
45 islands on the US East Coast) with and without tourism resort development and storm protection. They conclude  
46 that once islands have developed into resorts with permanent engineered defences and fixed infrastructure, and the  
47 infrastructure is insured, these permanent structures prevent natural migration of coastal ecosystems in response to  
48 storms and sea level rise. In the longer term, due to the regular post-disaster rebuilding of infrastructure, islands are  
49 likely to lose their natural buffering capacity, become inundated and experience higher levels of damage. In short  
50 insurance is a risk transfer mechanism that needs to be carefully managed to ensure that it does not reduce capacity  
51 to adapt.

52  
53 Risk spreading can take many forms from reliance on social networks and familial ties to creation of marine  
54 protected areas to enhance representation of habitat types and replication of species. For example, in Fiji, after

1 Cyclone Ami in 2003, those households whose homes were not affected by the cyclone increased their energy and  
2 time spent fishing to support those whose homes were damaged (Takasaki, 2011). In this way, risk was spread  
3 among the households, and mutual support formed a central pillar for community-based adaptation. In the case of  
4 natural systems, risks can be spread through the creation of marine protected areas around key refuges that protect a  
5 diversity of habitat, that cover an adequate proportion of the habitat and that protect critical areas such as nursery  
6 grounds and fish spawning aggregation areas (McLeod *et al.*, 2009). By creating a network of marine protected  
7 areas there is a chance that risks associated with some forms of climate change can be spread and potentially  
8 reduced.  
9

### 11 29.6.2.3. Working Collectively to Address Climate Impacts

13 In the literature more attention is now being focused on the relevance and application of community-based  
14 adaptation (CBA) principles to island communities, as a facilitating factor in adaptation planning and  
15 implementation (Warrick, 2009; Kelman *et al.*, 2011). Warrick's work in Vanuatu focuses on empowerment that is  
16 'helping people to help themselves', while addressing local priorities and building on local knowledge and capacity.  
17 This approach to adaptation is unequivocally being promoted as an appropriate strategy for small states, since it is  
18 something done 'with' rather than 'to' communities" (Warrick, 2009). Dumaru (2010) has also documented the  
19 outcomes of a pilot community-based adaptation project implemented on Druadrua Island, north-eastern Fiji: more  
20 effective management of local water resources through capacity building, enhanced knowledge of climate change,  
21 and the establishment of mechanisms to facilitate greater access to technical and financial resources from outside the  
22 community. Similarly, review of an adaptation project in coastal Samoa reveals that 'intensive participatory village  
23 consultation' and capacity building which take into account traditional practices, can be vital to the success of  
24 adaptation initiatives in island communities (Daly, 2010). Case studies from Fiji and Samoa in which multi-  
25 stakeholder and multi-sector participatory approaches were used to help enhance resilience of local residents to the  
26 adverse impacts of disasters and climate change (Gero *et al.*, 2011), further support this view.  
27

### 29 29.6.2.4. Addressing Long-Term Climate Impacts, and Migration

31 There is some speculation that capacity to adapt to short term hazards increases the ability of some islanders to adapt  
32 to climate change (such as Lefale, 2010) – the logic being that enhanced short term system resilience reduces the  
33 likelihood of systems changing state in the longer term – although there is little evidence to support this. The same  
34 speculative discourse has been applied to ecosystems. In the case of coral reefs, those reef systems with low levels  
35 of external stress are likely to be most resistant to system changes in the face of climate change (Nystrom *et al.*,  
36 2008). For both social and ecological island systems, more work is needed to verify the accuracy of this assumption.  
37

38 In a world of 4 degrees C warming, recent research suggests that sea levels may rise by 0.5m to 2.5m (Nicholls *et*  
39 *al.*, 2011), however adapting to rising seas at the higher end of this spectrum is likely to cause severe problems for  
40 low lying island states. Migration is frequently suggested as a means of addressing this problem (Byravan and  
41 Rajan, 2006, Biermann and Boas, 2008). Analogues can provide some insight into environmental stress driven  
42 migration, for example by looking at post-hurricane population displacement in the Caribbean (McLeman and  
43 Hunter, 2010). One example is the case of internal migration within Papua New Guinea, as a response to inundation  
44 during the 2009 extreme high tides. So severe was the threat that the inhabitants of the Carteret Islands loaded their  
45 personal effects into fishing nets and secured them at elevation between palm trees, before seeking refuge on  
46 neighboring Bougainville island (Jarvis, 2010). It should not however be assumed that migration is a viable option in  
47 all such circumstances, as it is unlikely that such movement of people could be so easily accomplished if the  
48 receiving island is not part of the same country. Neither would such internal migration be possible within states with  
49 all low-lying islands. Recent commentators argue that forced migration is likely to be a maladaptive response,  
50 leading to high risk of unemployment, social marginalization, food insecurity and increased morbidity, among other  
51 problems (Barnett and O'Neill, 2012: 9). Barnett and O'Neill (2012) reflect that when migration is voluntary and it  
52 involves smaller distances (ideally within own sovereign lands) these factors reduce the potentially maladaptive  
53 impacts of resettlement.  
54



1 While the example of the Carteret Islands cannot be described as evidence of climate change adaptation per se, it  
2 suggests that under some scenarios entire island communities may need to relocate in the future, whether within the  
3 same jurisdiction, or externally – for example in the case of 4 degrees warming (Gemenne, 2011). In the latter case,  
4 the international community could find itself confronted with other critical issues such as how to support the legal  
5 and political continuity of a state that has lost its territory (Cournil and Gemenne, 2010). (See also 29.3.3.4 and  
6 29.8).

### 9 **29.6.3. Barriers to Adaptation**

10  
11 Ever since publication of the IPCC SAR in 1996, significant barriers to the implementation of various climate  
12 change response strategies in island settings have been discussed in considerable detail. The impediments include  
13 inadequate access to financial, technology and human resources, issues related to cultural and social acceptability of  
14 measures, and constraints imposed by the existing political and legal framework. Owing to their nature and  
15 complexity, these constraints will not be easily eliminated in the short term and will require on-going attention if  
16 their impact is to be minimized incrementally over time. While lack of access to adequate financial, technology and  
17 human resources is often cited as the most critical constraint, experience has shown that endogenous factors such as  
18 culture, ethics, knowledge and attitudes to risk are equally important considerations in making adaptation choices.  
19 They can function either as barriers or facilitating factors, depending on the local circumstances. The lack of local  
20 support for the development of new infiltration galleries to augment freshwater supply on Tarawa atoll, Kiribati,  
21 highlights the importance of social acceptability as a factor in adaptation choices. Although water scarcity is severe,  
22 there is much resistance to the use of this simple technology, because it will necessitate encroachment on traditional  
23 lands (Moglia et al., 2008a, 2008b). Such considerations have led to the conclusion that there is still much to be  
24 learned about the drivers of past adaptation and how ‘mainstreaming’ into national programs and policies, widely  
25 acclaimed to be a virtually indispensable strategy, can practically be achieved (Mercer *et al.*, 2007; Adger *et al.*,  
26 2009; Mertz *et al.*, 2009).

27  
28 Notwithstanding the on-going global debate and the extensive and ever-growing body of literature on the subject,  
29 there is still a relatively low level of awareness and understanding at the community level on many islands about the  
30 nature of the threat posed by climate change (Nunn, 2009). Lack of awareness, knowledge and understanding can  
31 function as an effective barrier to the implementation and ultimate success of adaptation programs. This is borne out  
32 by the earlier referenced example from Tarawa atoll, Kiribati, where there was much resistance to the use of  
33 infiltration galleries, as an adaptation measure in the water resources sector, and in the case of Fiji where researchers  
34 found that spiritual beliefs, traditional governance mechanisms, and a short term approach to planning were barriers  
35 to community engagement and understanding of climate change (Lata and Nunn, 2012). Although widely  
36 acknowledged to be critical in small islands, few initiatives pay little more than perfunctory attention to the  
37 importance of awareness, knowledge and understanding in climate change adaptation planning. Hence, the renewed  
38 call for adaptation initiatives to include and focus directly on these elements on an ongoing basis (e.g., Crump, 2008;  
39 Kelman and West, 2009; Kelman, 2010; Kuruppu and Liverman, 2011; Gero *et al.*, 2011) is timely, if these barriers  
40 are to be eventually removed.

### 43 **29.6.4. Mainstreaming and Integrating Climate Change into Development Plans and Policies**

44  
45 There is a growing body of literature that discusses the benefits and possibilities of mainstreaming or integrating  
46 climate change policies in development policies, and various mechanisms through which development agencies as  
47 well as donor and recipient countries can seek to capitalize on the opportunities for so doing are beginning to emerge  
48 (see for example Klein *et al.*, 2007; Mertz *et al.*, 2009). This view finds support in the work of Agarwala and van  
49 Aalst (2008) who, based on examples from various countries including Fiji, have shown that climate change can be  
50 linked to development objectives due to the various synergies (and trade-offs) involved in integrating adaptation to  
51 climate change in development cooperation activities, such as the focus on disaster risk reduction, community-based  
52 approaches to development, and building adaptive capacity. Yet, Boyd *et al.* (2009) challenge this view, arguing that  
53 this is a naive interpretation of the threats from climate change to the development agenda, and that development

1 policy under a changing climate ‘needs to be better, quicker and more coherent than anything that has been seen so  
2 far’ (Boyd *et al.*, 2009: 659).

3  
4 Although there are synergies and benefits to be derived from the integration of climate change and development  
5 policies, Schipper and Pelling (2010) caution that conflicts in policy responses to address these issues separately can  
6 give rise to conflict and an intellectual divide, which may be attributed primarily to a lack of institutional overlap  
7 and also to differences in language, method and political relevance. Overall however, there appears to be an  
8 emerging consensus around the views expressed by Swart and Raes (2007) that climate change and development  
9 strategies should be considered as complementary, and that some elements such as land and water management and  
10 urban planning provide important adaptation, development and mitigation opportunities.

## 11 12 13 **29.7. Adaptation and Mitigation Interactions**

14  
15 Greenhouse gas emissions from most small islands are negligible in relation to global emissions, yet small islands  
16 will most probably bear the brunt of climate change impact (Srinivasan, 2010). Since small islands’ populations are  
17 not responsible for anthropogenic climate change there is little moral imperative for them to reduce greenhouse gas  
18 emissions, though most have chosen to do so because of the potential co-benefits and synergies. Malta and Cyprus  
19 are obliged to do so in line with EU climate and energy policies. This section considers some of the inter-linkages  
20 between adaptation and mitigation on small islands and considers the potential synergies, conflicts, trade-offs and  
21 risks. Unfortunately there is relatively little research on the emissions reduction potential of small islands, and far  
22 less on the inter-linkages between climate change adaptation and emissions reduction in small islands. Therefore in  
23 this section a number of assumptions are made about how and where adaptation and mitigation actions interact.

### 24 25 26 **29.7.1. Assumptions/Uncertainties Associated with Adaptation and Mitigation Responses**

27  
28 Small islands are not homogeneous, they have diverse geo-physical characteristics (e.g. remote, low-lying,  
29 mountainous) and economic structures. Following Nunn (2009) we assume that the combination of island geography  
30 and economic types informs the extent to which adaptation and mitigation actions might interact. Island geography  
31 and location influence sensitivity to hydro-meteorological and related hazards such as cyclones, floods, droughts,  
32 invasive alien species, vector borne disease, and landslides. On the other hand the capacity of island residents to  
33 cope is often related income levels, access to capital assets and resources, technology and knowledge. Island  
34 economies can be grouped into four broad ‘types’, i.e. those that depend on: i) remittances from migrant workers  
35 overseas; ii) natural resource extraction and export; iii) earnings from services (mostly tourism); and iv) diversified  
36 economies with manufacturing – mostly larger economies (UNCTAD, 1997) These economic types appear to  
37 inform the potential for greenhouse gas emissions reduction, as not all of these have the key ‘mitigation’ sectors:  
38 that is energy, transport, industry, built environment, agriculture, forestry, or waste management sectors (Metz *et al.*,  
39 2007). For example, many aid dependent small island economies, often do not have extensive industrial  
40 development, extensive commercial buildings, or large transport sectors. Hence the opportunities for emissions  
41 reductions in these cases are very limited. Far more mitigation opportunities are expected to exist in larger island  
42 economies that rely on services, natural resource exports, or manufacturing. Furthermore, Swart and Raes (2007)  
43 contend that adaptation and mitigation usually operate at different temporal and spatial scales and are mostly  
44 relevant for different economic sectors, so that costs and benefits are distributed differently.

45  
46 Table 29-4 presents an indicative assessment of potential areas for mitigation activity on small islands by island  
47 economy type.

48  
49 [INSERT TABLE 29-4 HERE

50 Table 29-4: Economic structure of small islands and areas of potential emissions reduction.]

51  
52 For many small islands, small domestic markets, limited human capacity and high costs of transporting goods to  
53 international markets act as significant barriers to industrial development (Armstrong and Read, 2002) potentially  
54 avoiding the need for large scale mitigation responses. Limited land area means that forestry and agriculture sectors

1 are often small scale, or subsistence. Energy supply is often delivered through state-supported monopolies, or  
2 imported, due to limited economies of scale, lack of local energy resources and sensitivity of energy supplies (Read,  
3 2010). In short, the geography and economies of islands limits economic diversity, and by extension, the  
4 opportunities available for adaptation and mitigation, however there remains scope for both synergies and conflicts  
5 between adaptation and mitigation on islands.  
6

7 Many authors refer to the high relative costs of the impacts of, and adaptation to, climate change in small islands.  
8 Bueno *et al.* (2008) examined the potential costs to the island nations of the Caribbean if greenhouse gas emissions  
9 continue unchecked and found that for just three categories—increased hurricane damages, loss of tourism revenue,  
10 and infrastructure damages—the Caribbean’s annual cost of inaction is projected to total \$22 billion annually by  
11 2050 and \$46 billion by 2100. These costs represent 10 per cent and 22 per cent, respectively, of the current  
12 Caribbean economy.  
13  
14

### 15 **29.7.2. Potential Synergies and Conflicts**

16

17 Metz *et al.* (2007) suggest that adaptation and mitigation interactions occur in one of four main ways: (i) adaptations  
18 that result in greenhouse emissions reduction, (ii) mitigation options that facilitates adaptation, (iii) policy decisions  
19 that couple adaptation and mitigation effects, and (iv) trade-offs and synergies between adaptation and mitigation.  
20 Each of these opportunities is now considered using three examples: coastal forestry, energy supply, and tourism.  
21  
22

#### 23 **29.7.2.1. Coastal Forestry**

24

25 Small islands have relatively large coastal zones (in comparison to land area) and most development are located on  
26 those coastal zones, therefore coastal adaptation is of critical importance in small islands. Coastal ecosystems (coral  
27 reefs, sea grasses and mangroves) can play an important role in protecting coastal communities from wave erosion,  
28 tropical cyclones, storm surges, and even moderate tsunami waves of less than 4 m (Cochard *et al.*, 2008). Where  
29 mangrove ‘bioshields’ are created from exotic species, there can be a damaging impact on the native ecosystem  
30 (Feagin *et al.*, 2010). Whilst coastal forests are seen as effective adaptation options in the coastal zones, they also  
31 play an important role as carbon sinks hence can be considered as a mitigation option. Research about the relative  
32 importance of tropical coastal forests as carbon sinks are well developed (van der Werf *et al.*, 2009). Recent research  
33 indicates that in the coastal zone initial estimates suggest that tropical wetlands may be among the largest terrestrial  
34 stores of carbon (Donato *et al.*, 2011) ref. The management and conservation of mangroves therefore has the  
35 potential to generate synergies between adaption and mitigation within the context of climate change Despite this  
36 knowledge researchers have found that current climate extremes, landslides, and agricultural pressures have made  
37 the expansion of forest carbon stocks more challenging (Fox *et al.*, 2010). Gilman *et al.* (2008) reassert this, noting  
38 that many human activities within tropical wetlands can reduce the buffering capacity of mangrove systems.  
39

40 Many studies suggest that in the absence of significant mitigation efforts at the global scale, adaptation interventions  
41 could become very costly and difficult to implement, once certain thresholds of change are reached. (Nelson, 2010;  
42 Rosenzweig and Wilbanks, 2010; Thornton *et al.*, 2010; Birkmann, 2011). Nicholls *et al.* (2011) make a similar  
43 observation with respect to coastal protection as a response option to sea level rise. They suggest that if global mean  
44 temperatures increase by around 4<sup>0</sup> C, which may lead to sea level rise between 0.5 m and 2 m, the likelihood of  
45 successful coastal protection in some locations such as low-lying small islands, will be low. Consequently, it is  
46 argued that ‘coastal abandonment’ would be a likely outcome in such circumstances (Nicholls *et al.*, 2011).  
47  
48

#### 49 **29.7.2.2. Energy Supply**

50

51 The study of renewable energy resources on small islands has a long history. However it is only recently that they  
52 have been considered within the context of long-term energy security (Praene *et al.*, 2012, Chen *et al.*, 2007). Stuart  
53 (2006) speculates that the lack of uptake of renewable technologies to date might be due to historical commitments  
54 to conventional fossil fuel based infrastructure, and a lack of resources to spend on costly research and development.

1 Those islands that have introduced renewable energy technologies have often done so with support from  
2 international development assistance (Dornan, 2011). Despite highly subsidized (or sometimes free) provision, there  
3 remain significant barriers to the wider institutionalization of renewable technologies in small islands. Research in  
4 Europe and the United States has shown the mitigation and cost savings benefits of Energy Service Companies  
5 (ESCOs). ESCOs are companies that enter into medium-to-long term performance-based contracts with energy  
6 users, invest in energy efficiency measures in buildings and firms, and profit from the ensuing energy savings  
7 measures for the premises, see for example (Steinberger *et al.*, 2009). Potential benefits exist in creating the  
8 opportunity for ESCOs to operate in small islands. Preliminary evidence from Fiji suggests that if the incentive  
9 mechanisms can be resolved, and information asymmetries between service providers and users can be aligned,  
10 ESCOs could provide an opportunity to expand renewable technologies (Dornan, 2009).

11  
12 The transition towards renewable energy sources (such as the shift to hydro-power in Fiji), away from fossil fuel  
13 dependence has been partly driven by economic reasons, notably to avoid oil price volatility and its impact (Dornan,  
14 2009). The development of hydro-power necessitates protection and management of the water catchment zones, and  
15 thus leading to improved management of the water resources – a critical adaptation consideration for areas expected  
16 to experience a decrease in average rainfall as a result of climate change. Whilst the cost effectiveness of renewable  
17 technologies is critical, placing it within the context of water adaptation can enhance project viability. Cost-benefit  
18 analyses have shown that in southeast Mediterranean islands photovoltaic generation and storage systems may be  
19 more cost-effective than existing thermal power stations (Kaldellis, 2008; Kaldellis *et al.*, 2009). Studies on tourist  
20 islands in the Maldives showed that solar power could produce about only 10 per cent of energy demand (van  
21 Alphen *et al.*, 2007), or 44.7 per cent (Georgei *et al.*, 2010). With such a disparity in these estimates it is difficult to  
22 accurately assess the cost-effectiveness of such technologies.

23  
24 Energy prices in small islands are among the highest anywhere in the world, mainly due to their dependence on  
25 imported fossil, and lack of economies of scale. Recent studies show that the energy sectors in these islands may be  
26 transformed into sustainable growth entities mainly through the judicious exploitation of renewable energy sources,  
27 combined with the implementation of energy efficiency measures (van Alphen *et al.*, 2008; Banuri, 2009; Mohanty,  
28 2012; Rogers *et al.*, 2012). Realising the potential for such transformation, the countries comprising the Alliance of  
29 Small Island States (AOSIS) launched SIDS Dock, which is intended to function as a ‘docking station’ to connect  
30 the energy sector in SIDS with the international finance, technology and carbon markets with the objective of  
31 pooling and optimizing energy efficiency goods and services for the benefit of the group. This initiative developed  
32 jointly by the Caribbean Community Climate Change Centre (CCCCC) and the Secretariat of the Pacific Regional  
33 Environment Programme (SPREP) seeks to increase energy independence in SIDS, while generating financial  
34 resources to support low carbon growth and adaptation interventions. Specifically, SIDS Dock will assist these  
35 islands in producing at least 50 % of their electricity from renewable sources, reduce petroleum consumption by 20-  
36 30 % and increase energy efficiency by 25% relative to 2005 baselines, by 2033 (CEEBIP, 2012)

### 37 38 39 29.7.2.3. *Tourism*

40  
41 Many small islands rely heavily on the foreign exchange from tourism to expand and develop their economies,  
42 including address mitigation and adaptation options. . Despite this, globally the tourism sector contributes around 5  
43 per cent of total greenhouse gas emissions (WTO and UNEP, 2008) and recent efforts to tax long-haul air travel as  
44 resulted in concern expressed over the impact of this policy on small island economies. Therefore policies that  
45 attempt to address mitigation isolation can result in undermining adaption efforts in small islands. When ecosystem  
46 services, on which the tourism sector relies (e.g. sewage treatment by coastal ecosystems, or greenhouse gas  
47 emissions from electricity production), are costed it becomes evident that reduction of the burden on ecosystems and  
48 engagement in more sustainable tourism planning has advantages (Thomas-Hope and Jardine-Comrie, 2007). In  
49 Jamaica, Thomas-Hope and Jardine-Comrie (2007) suggest that sustainable tourism planning should include  
50 activities undertaken by the industry, that is tertiary treatment of waste, and re-use of water, as well as composting  
51 organic material and investing in renewable energy. In contrast, Gossling and Schumacher (2010) suggest that  
52 tourists themselves could play a role in becoming carbon neutral, through voluntary offsetting. In their analysis of  
53 tourism in the Seychelles they recommend first undertaking a detailed assessment of emissions, and following this  
54 with a review of the options for becoming carbon neutral.

### 29.8. Facilitating Adaptation and Avoiding Maladaptation

While there is a clear consensus that adaptation to the risks posed by global climate change is necessary and urgent in small islands, the implementation of specific strategies and options is a complex process that requires critical evaluation of multiple factors, if expected outcomes are to be achieved (Kelman and West, 2009; Barnett and O'Neill, 2012). These considerations may include, *inter alia*, prior experience with similar or related threats, efficacy of the strategies or options and their co-benefits, costs (monetary and non-monetary), availability of alternatives and social acceptability. In addition, previous work (e.g. Adger *et al.*, 2005) has emphasized the relevance of scale as a critical factor when assessing the efficacy and value of adaptation strategies, as the extent to which an option is perceived to be a success, failure or maladaptive may be conditioned by whether it is being assessed as a response to climate variability (shorter-term) or climate change (longer-term). Consequently, although lessons learned from adaptation experiences in one island may offer some helpful guidance to other states, wholesale transfer may not always be advisable, as the 'lenses' through which adaptation options are viewed differ from one community to the next, based on ecological, socio-economic, cultural and political values.

As in other regions, adaptation in islands is locally delivered and context specific (Tompkins *et al.*, 2010). Yet, sectors and communities on small islands are often so intricately linked that there are many potential pathways that may lead to maladaptation, be it via increased greenhouse gas emissions, foreclosure of future options, burdensome opportunity costs on local communities, by unintentionally discouraging adaptation initiatives, or by fostering over-dependence on external support (see for example Box 29-1).

\_\_\_\_\_ START BOX 29-1 HERE \_\_\_\_\_

#### Box 29-1. Resettlement and Migration: Adaptation or Maladaptation?

Whilst there is agreement that assistance from the international community is vital for supporting adaptation programs in small islands, there is a concern that some types of interventions may actually be maladaptive. For example, Barnett and O'Neill (2012) suggest that strategies such as resettlement and migration should be regarded as options of 'last resort' on islands, as they may actually discourage viable adaptation initiatives, by fostering over-dependence on external support. They argue that in the Pacific islands

"Relying on resettlement forecloses on all other adaptation options...if there is no future for people in the places in which they live, then there is no reason to manage those places sustainably...Thus, if the only answer to climate change is resettlement, then there is no need to do anything else but wait, all other adaptation options will become impossible, and incentives to reduce greenhouse gas emissions will be similarly reduced" (Barnett and O'Neill, 2012, p.10)

\_\_\_\_\_ END BOX 29-1 HERE \_\_\_\_\_

Similarly, while insurance is being promoted as an element of the overall climate change response strategy in some island regions, e.g. the Caribbean, where the Caribbean Catastrophe Risk Insurance Facility (a multi-country risk pooling facility established in 2007 and owned by Caribbean governments) has been successfully implemented, concerns have also been expressed in various jurisdictions about possible linkages to maladaptation. The potential consequences include the imposition of exorbitant premiums that are beyond the capacity of resource-scarce communities as the perception of climate change risks increase, discriminatory coverage of sectors that may not align with local priorities, and tacit encouragement for the state, individuals and the private sector to engage in behavior that is not risk-averse, e.g. development in hazard-prone areas (Herweijer *et al.*, 2009; Linnerooth-Bayer *et al.*, 2009; Linnerooth-Bayer *et al.*, 2011; van Nostrand and Nevius, 2011; Thomas and Leichenko, 2011). Likewise, although the exploitation of renewable energy is vital to the sustainable development of small islands, more attention needs to be paid to the development of energy storage technologies, if rapid transition from conventional fuels is to be achieved in an efficient manner. This is especially important in the case of intermittent energy sources (e.g. solar

1 and wind), as the cost of current storage technologies can frustrate achievement of full conversion to renewables.  
2 Thus to avoid the possibility of maladaptation in the sector, countries may wish to consider engaging in  
3 comprehensive planning, including considerations relating to energy storage (Krajačić *et al.*, 2008; Krajačić *et al.*,  
4 2010; Bazilian *et al.*, 2011).

5  
6 Recent studies have demonstrated that opportunities exist in island environments for avoiding maladaptation. It has  
7 been shown for example that decisions about adaptation choices and their implementation are best facilitated where  
8 there is constructive engagement with the communities at risk, in a manner that fosters transparency, trust and  
9 genuine commitment to the process (Fazey *et al.*, 2008; Lopez Marrero, 2008; van Aalst, 2008; Maceda *et al.*,  
10 2009). Further, some analysts argue that adaptation choices are often subjective in nature and suggest that  
11 participatory stakeholder involvement can yield valuable information about the priorities and expectations that  
12 communities attach to the sector for which adaptation is being sought. The point is underscored by Moreno and  
13 Becken (2009), whose study of the tourism sector on the Manamuca islands (Fiji) clearly demonstrates that  
14 approaches which explicitly integrate stakeholders into each step of the process from vulnerability assessment right  
15 through to consideration of alternatives measures can provide a sound basis for assisting destinations with the  
16 implementation of appropriate adaptation interventions. This view is supported by Dulal *et al.* (2009), who argue  
17 that the most vulnerable groups in the Caribbean - the poor, elderly, indigenous communities and rural children -  
18 will be at greater risk of being marginalized, if adaptation is not informed by similar equitable and participatory  
19 frameworks.

20  
21 Other studies reveal that new paradigms whose adoption can reduce the risk of maladaptation in island  
22 environments, are emerging across various sectors. In the area of natural resource management, Hansen *et al.* (2010)  
23 suggest that the use of protected areas for climate refugia, reduction of non-climate stressors on ecosystems,  
24 adoption of adaptive management approaches combined with reduction of greenhouse gas emissions wherever  
25 possible, are likely to be more effective response strategies than traditional conservation approaches. Other strategic  
26 approaches, including the implementation of multi-sectoral and cross-sectoral measures, also facilitate adaptation in  
27 a more equitable, integrated and sustainable manner. Similarly, 'no-regret' measures such as wastewater recycling,  
28 trickle irrigation, conversion to non-fossil fuel based energy and transportation, which make good sense with or  
29 without the threat of climate change, and 'low-regret' strategies, which may only increase existing operational costs  
30 marginally, are becoming increasingly attractive options to island governments (Gravelle and Mimura, 2008;  
31 Heltberg *et al.*, 2009; Cashman *et al.*, 2010; Howard *et al.*, 2010). Together, these constitute valid risk management  
32 approaches, as they are designed to assist communities in making prudent, but necessary decisions, in the face of an  
33 uncertain future.

34  
35 Caution is needed to ensure that donors are not driving the adaptation and mitigation agenda in small islands, as  
36 there is a risk that donor-driven adaptation or mitigation will not address the salient challenges on small islands, and  
37 may lead to inadequate adaptation or a waste of scarce resources (Barnett, 2010; Nunn, 2009). There is a real  
38 concern that donor-led initiatives may unintentionally cause enhanced vulnerability by supporting adaptation  
39 strategies that are externally derived, rather than optimizing the benefits of local practices that have proven to be  
40 efficacious through time (Reenberg *et al.*, 2008; Kelman and West, 2009; Campbell and Beckford, 2009). For  
41 instance, Kelman (2011) citing an example from Samoa, notes that house construction which has traditionally been  
42 designed to facilitate easy repair with local materials after cyclones, is beginning to be replaced by more 'modern'  
43 practices, that are perceived to be much more costly and less adaptable.

44  
45 Finally, there is continuing strong support for the view that climate change adaptation strategies in small islands  
46 should concurrently be aimed at achieving poverty reduction and sustainable development. Even in low-lying,  
47 vulnerable atoll states such as Kiribati, where the threats of climate change are real, other present-day development  
48 challenges such as pollution, sewerage and solid waste management should not be sidelined. Indeed, there is  
49 considerable agreement among scholars that adaptation planning on small islands is likely to yield the most positive  
50 outcomes, where there is a sound understanding of the multiple non-climate stressors that interact with climate  
51 change (Kelman and West, 2009; Moreno and Becken, 2009; Storey and Hunter, 2010).

## 29.9. Research and Data Gaps

It should be evident from the foregoing assessment that significant advances in our understanding of the actual impacts and potential effects of climate change on small islands have been made since the AR4. These advances cover a range of themes including: dynamic downscaling of scenarios appropriate for small islands; impacts of trans-boundary processes generated well beyond the borders of an individual nation or island; barriers to adaptation in small islands and how they may be overcome; the relationships between climate change adaptation and disaster risk reduction; and, the relationships between climate change adaptation, maladaptation and sustainable development.

It is also evident that much further work is required on these topics in small island situations, especially comparative research. There are also important information and data gaps and many uncertainties still exist on impacts, vulnerability and adaptation in small islands. These include:

- **Lack of climate change and socio-economic scenarios and data at the required scale.** For example, projected changes in climate for the Caribbean, Pacific, Indian Ocean and Mediterranean islands, generally apply to the regions as a whole and not to specific countries. However, most socio-economic decisions are taken at smaller scales and as a result a few regional and local studies have been undertaken that are based on downscaled climate or socio-economic data. There is need for further credible simulations of future small island climates and socio-economic conditions.
- **Uncertainty about the potential impacts of climate change.** In several small islands adaptation is being progressed without adequate understanding of past or potential impacts and vulnerability. Whilst assessment of future impacts is hampered because of uncertainty in climate projections at the local island level, alternative scenarios could be used for vulnerability and sensitivity studies to guide adaptation strategies.
- **Need for a range of climate change-related projections beyond temperature and sea-level.** Generally climate-model projections of temperature and sea-level have been satisfactory, but there are strong requirements for projections for other variables that are of critical importance to small islands. These include rainfall and drought, wind direction and strength, tropical storms and wave climate, and recognition that trans-boundary processes are also significant in a small island context.
- **Need to acknowledge the heterogeneity and complexity of small island states and territories.** Although small islands have several characteristics in common, neither the variety or complexity of small islands is sufficiently appreciated. Thus, transferring data and practices from a continental situation, or from one small island state to another, needs to be done with care.
- **Need to develop a typology that classifies small island states into a few groupings based on their social, cultural, economic, physical and ecological characteristics relevant to climate change impacts and vulnerability.** This has been an elusive task to date noting the discussion on vulnerability indicators in 29.6.1. Notwithstanding that discussion as well as the foregoing point there is increasing evidence that such a typology could be developed in stages. For example, an improved understanding of the interactions between vulnerability and ‘island type’ could provide useful guidance for optimizing scarce adaptation resources at community and local levels.
- **Within country/territory differences need to be better understood.** Many of the environmental and human impacts we have reported have been attributed to the whole country, when in fact they refer only to the major centre or town or region. There is need for more work on rural areas, outer islands and secondary communities and not just in the urban areas where it has hitherto been concentrated. Several examples of such research have been cited in this chapter. Also it should be noted that some small island states are single islands and others highly fragmented multiple islands.
- **Lack of investment and attention to climate and environmental monitoring frameworks in small islands.** A fundamental gap in the ability to improve empirical understanding of present and future climate change impacts is the lack of climate and environmental monitoring frameworks that in turn hampers the level of confidence with which adaptation responses can be designed and implemented.
- **Economic and social costs of climate change impacts and adaptation options are rarely known.** In small island states and territories the costs of past weather, climate and ocean events are poorly known and further research is required to identify such costs, and to determine the economic and societal costs of climate change impacts and the costs of adaptation options to minimize those impacts.

- **Need to integrate adaptation to climate change and development co-operation activities.** There is some evidence to indicate that longer-term climate change adaptation policies and programs in small islands are compromising more immediate development objectives. Avenues need to be developed to redress this situation perhaps through a combined focus on hazard risk reduction and community based approaches to development and adaptation. Synergies between adaptation and development need to be explored.

The foregoing list is a sample of the gaps, needs and research agenda appropriate for small island states. If those gaps are filled, needs satisfied and research achieved, we feel that the general view that small islands are highly vulnerable to climate change, and, that they have low adaptive capacity, may well be challenged by some nations as well as in some sectors and/or regions within small island states.

## Frequently Asked Questions

### ***FAQ 29.1: Are small islands experiencing the impacts of climate change?***

Observed impacts of climate change on small islands are not conclusive. Whilst the media and some researchers emphasize the vulnerability of small islands and potential future impacts of climate change, there are few studies that have been able to isolate climate change impacts from those associated with climate variability and/or human activities. Even in the case of atolls where inundation from sea-flooding and storm surges and shoreline erosion has occurred, sea-level rise specifically linked to climate change has not been identified as a primary cause. Moreover, in much of the literature on small islands the distinction between observed impacts and projected future impacts is often blurred with impacts relating to some recent extreme weather- or ocean- related event being used as an analogy to what may happen in the future with climate change. This does not mean that small islands are not experiencing the impacts of climate change, but rather that the magnitude of any impact is not sufficient to be clearly associated with climate change. It also reflects the poor level of empirical monitoring which occurs in small island environments to underpin research into attribution of climate change stress.

### ***FAQ 29.2: Why is it difficult to detect and attribute changes on small islands to climate change?***

In the last two or three decades many small islands have undergone substantial changes in human settlement patterns and in socio-economic and environmental conditions. Such changes may have masked any clear evidence of climate change. This has resulted in difficulties when attempting to detect and attribute changes on small islands to climate change. One example can be cited. In many small islands coastal erosion has been widespread and has adversely affected important tourist facilities, settlements, utilities and infrastructure. However, specific case studies from islands in the Pacific and Indian oceans and the Caribbean have indicated that attribution of such shoreline instability to factors like sea-level rise associated with climate change have been masked by pervasive human impacts as well as episodic extreme events. Whilst coastal erosion is consistent with models of sea-level rise resulting from climate change, it has not been possible to quantify the extent of attribution of past and on-going coastal erosion to that factor. Given the range of natural processes and human activities that could impact the coasts of small islands in the future, the role of climate change-related processes may continue to be difficult to quantify and attribute.

## References

- Adger, W., Neil, N. Brooks, G. Bentham, M. Agnew, and S. Eriksen, 2004: New Indicators of Vulnerability and Adaptive Capacity, Tyndall Centre for Climate Change Research Technical Report 7, Norwich, UK, .
- Adger, W., N. Arnell, E. Tompkins, 2005: Successful adaptation to climate change across scales. *Global Environmental Change*, **5(2)**, 77-86.
- Adger, W., S. Dessai, M. Goulden, M. Hulme, I. Lorenzoni, D. Nelson, L. Naess, J. Wolf, and A. Wreford, 2009: Are there social limits to adaptation to climate change? *Climatic Change*, **93(3)**, 335-354.
- Agrawala, S. and M. van Aalst, 2008: Adapting development cooperation to adapt to climate change. *Climate Policy*, **8(2)**, 183-193.
- Ainsworth, T.D., M. Fine, G. Roff, and O. Hoegh-Guldberg, 2007: Bacteria are not the primary cause of bleaching in the mediterranean coral *oculina patagonica*. *ISME J*, **2(1)**, 67-73.



- 1 Akesson, L., 2008: The resilience of the cape verdean migration tradition. In: *Transnational archipelago.*  
2 *perspectives on cape verdean migration and the diaspora.* [Batalha, L. and J. Carling(eds.)]. Amsterdam  
3 University Press, Amsterdam, pp. 269-293.
- 4 Aligizaki, K. and G. Nikolaidis, 2008: Morphological identification of two tropical dinoflagellates of the genera  
5 *gambierdiscus* and *sinophysis* in the mediterranean sea. *Journal of Biological Research-Thessaloniki*, **9**, 75-82.
- 6 Alling, A., O. Doherty, H. Logan, L. Feldman, and P. Dustan, 2007: Catastrophic coral mortality in the remote  
7 central pacific ocean: Kiribati, phoenix islands. *Atoll Research Bulletin*, (**551**), 1-21.
- 8 Alvarez-Filip, L., N.K. Dulvy, J.A. Gill, I.M. Cote, and A.R. Watkinson, 2009: Flattening of caribbean coral reefs:  
9 Region-wide declines in architectural complexity. *Proceedings of the Royal Society B-Biological Sciences*,  
10 **276(1669)**, 3019-3025.
- 11 Aminzadeh, S.C., 2007: A moral imperative: The human rights of climate change. *Hastings International*  
12 *Comparative Law Review*, **30(2)**, 231-265.
- 13 Angelucci, F. and P. Conforti, 2010: Risk management and finance along value chains of small island developing  
14 states. evidence from the caribbean and the pacific. *Food Policy*, **35(6)**, 565-575.
- 15 Anthoff, D., R. Nicholls, and R. Tol, 2010: The economic impact of substantial sea-level rise. *Mitigation and*  
16 *Adaptation Strategies for Global Change*, **15(4)**, 321-335.
- 17 Anthony, K.R.N., Kline, D.I., G. Dian-Pulido, S. Dove, and O. Hoegh-Guldberg, 2008: Ocean acidification causes  
18 bleaching and productivity loss in coral reef builders. *Proceedings of the National Academy of Sciences*, **105**,  
19 17442-17446.
- 20 Armstrong, H.W. and R. Read, 2002: The phantom of liberty?: Economic growth and the vulnerability of small  
21 states. *Journal of International Development*, **14(4)**, 435-458.
- 22 Baider, C. and F.B.V. Florens, 2011: Control of invasive alien weeds averts imminent plant extinction. *Biological*  
23 *Invasions*, **13(12)**, 2641-2646.
- 24 Ballu, V., M.-. Bouin, P. Simeoni, W.C. Crawford, S. Calmant, J.-. Bore, T. Kanas, and B. Pelletier, 2011:  
25 Comparing the role of absolute sea-level rise and vertical tectonic motions in coastal flooding, torres islands  
26 (vanuatu). *Proceedings of the National Academy of Sciences.*, DOI: **10.1073/pnas.1102842.108**.
- 27 Banuri, T., 2009: Climate change and sustainable development. *Natural Resources Forum*, **33(4)**, 257-258.
- 28 Barnett, J., 2001: Adapting to climate change in pacific island countries: The problem of uncertainty. *World*  
29 *Development*, **29(6)**, 977-993.
- 30 Barnett, J. and J. Campbell, 2010: *Climate change and small islands states: Power, knowledge and the south pacific*.  
31 Earthscan, London and Washington D.C., pp. 218.
- 32 Barnett, J., S. Lambert, and I. Fry, 2008: The hazards of indicators: Insights from the environmental vulnerability  
33 index. *Annals of the Association of American Geographers*, **98(1)**, 102-119.
- 34 Barnett, J. and S.J. O'Neill, 2012: Islands, resettlement and adaptation. *Nature Climate Change*, **2**, 8-10.
- 35 Barnett, J., 2008: The effect of aid on capacity to adapt to climate change: Insights from niue. *Political Science*,  
36 **60(1)**, 31-45.
- 37 Barr, R., S. Fankhauser, and K. Hamilton, 2010: Adaptation investments: A resource allocation framework.  
38 *Mitigation and Adaptation Strategies for Global Change*, **15(8)**, 843-858.
- 39 Bastos, C., 2008: Migrants, settlers and colonists: The biopolitics of displaced bodies. *International Migration*,  
40 **46(5)**, 27-54.
- 41 Bazilian, M., H. Rogner, M. Howells, S. Hermann, D. Arent, D. Gielen, P. Steduto, A. Mueller, P. Komor, R.S.J.  
42 Tol, and K.K. Yumkella, 2011: Considering the energy, water and food nexus: Towards an integrated modelling  
43 approach. *Energy Policy*, **39(12)**, 7896-7906.
- 44 Becker, M., B. Meyssignac, C. Letetrel, W. Llovel, A. Cazenave, and T. Delcroix, 2012: Sea level variations at  
45 tropical pacific islands since 1950. *Global and Planetary Change*, **80-81**, 85-98.
- 46 Béguin, A., S. Hales, J. Rocklöv, C. Åström, V.R. Louis, and R. Sauerborn, 2011: The opposing effects of climate  
47 change and socio-economic development on the global distribution of malaria. *Global Environmental Change*,  
48 **21(4)**, 1209-1214.
- 49 Bell, J.D., J.E. Johnson, and A.J. Hobday (eds.), 2011: *Vulnerability of tropical pacific fisheries and aquaculture to*  
50 *climate change*. Secretariat of the Pacific Community, Noumea, New Caledonia, pp. 925.
- 51 Benning, T.L., D. LaPointe, C.T. Atkinson, and P.M. Vitousek, 2002: Interactions of climate change with biological  
52 invasions and land use in the hawaiian islands: Modeling the fate of endemic birds using a geographic  
53 information system. *Proceedings of the National Academy of Sciences*, **99**, 14246-14249.

- 1 Bienfang, P.K., S.V. DeFelice, E.A. Laws, L.E. Brand, R.R. Bidigare, S. Christensen, H. Trapido-Rosenthal, T.K.  
2 Hemscheidt, D.J. McGillicuddy, D.M. Anderson, H.M. Solo-Gabriele, A.B. Boehm, and L.C. Backer, 2011:  
3 Prominent human health impacts from several marine microbes: History, ecology, and public health  
4 implications. *International Journal of Microbiology*, DOI:10.1155/2011/152815, 1-15.
- 5 Biermann, F. and I. Boas, 2008: Protecting climate refugees: The case for a global protocol. *Environment: Science  
6 and Policy for Sustainable Development*, **50(6)**, 8-17.
- 7 Biermann, F. and I. Boas, 2010: Preparing for a warmer world: Towards a global governance system to protect  
8 climate refugees. *Global Environmental Politics*, **10(1)**, 60-88.
- 9 Bijlsma, L., C.N. Ehler, R.J.T. Klein, S.M. Kulshrestha, R.F. McLean, N. Mimura, R.J. Nicholls, L.A. Nurse, H.  
10 Perez Nieto, E.Z. Stakhiv, R.K. Turner, and R.A. Warrick, 1996: Coastal zones and small islands. In: *Climate  
11 change 1995: Impacts, adaptations and mitigation of climate change: Scientific - technical analyses.  
12 contribution of working group II to the second assessment report of the intergovernmental panel on climate  
13 change*. [Watson, R.T., M.C. Zinyowera, and R.H. Moss(eds.)]. Cambridge University Press, Cambridge, UK  
14 and New York, USA, pp. 289-324.
- 15 Birkmann, J., 2011: First-and second-order adaptation to natural hazards and extreme events in the context of  
16 climate change. *Natural Hazards*, **58(2)**, 811-840.
- 17 Blackburn, T.M., P. Cassey, R.P. Duncan, K.L. Evans, and K.J. Gaston, 2004: Avian extinction and mammalian  
18 introductions on oceanic islands. *Science*, **305**, 1955-1958.
- 19 Bokhorst, S., A. Huiskes, P. Convey, and R. Aerts, 2007: The effect of environmental change on vascular plant and  
20 cryptogam communities from the falkland islands and the maritime antarctic. *BMC Ecology*, **7(1)**, 15.
- 21 Bokhorst, S., A. Huiskes, P. Convey, P.M. van Bodegom, and R. Aerts, 2008: Climate change effects on soil  
22 arthropod communities from the falkland islands and the maritime antarctic. *Soil Biology and Biochemistry*,  
23 **40(7)**, 1547-1556.
- 24 Boyd, E., N. Grist, S. Juhola, and V. Nelson, 2009: Exploring development futures in a changing climate: Frontiers  
25 for development policy and practice. *Development Policy Review*, **27(6)**, 659-674.
- 26 Brandt, M.E. and J.W. McManus, 2009: Disease incidence is related to bleaching extent in reef-building corals.  
27 *Ecology*, **90(10)**, 2859-2867.
- 28 Briguglio, L.P., 2010: Defining and assessing the risk of being harmed by climate change. *International Journal of  
29 Climate Change Strategies and Management*, **2(1)**, 23-34.
- 30 Brooks, N., W.N. Adger, and P.M. Kelly, 2005: The determinants of vulnerability and adaptive capacity at the  
31 national level and the implications for adaptation. *Global Environmental Change Part A*, **15(2)**, 151-163.
- 32 Bueno, R., C. Herzfeld, E. Stanton, and F. Ackerman, 2008: The Caribbean and Climate Change: The Costs of  
33 Inaction. Stockholm Environment Institute and US Center of Global Development and Environment Institute,  
34 Tufts University, 37 pp.
- 35 Bush, D.M., W.J. Neal, and C.W. Jackson, 2009: Summary of puerto rico's vulnerability to coastal hazards: Risk,  
36 mitigation, and management with examples. *Geological Society of America Special Papers*, **460**, 149-165.
- 37 Byravan, S. and S.C. Rajan, 2006: Providing new homes for climate change exiles. *Climate Policy*, **6(2)**, 247-252.
- 38 Cambers, G., 2009: Caribbean beach changes and climate change adaptation. *Aquatic Ecosystem Health and  
39 Management*, **12(2)**, 168-176.
- 40 Campbell, D. and C. Beckford, 2009: Negotiating uncertainty: Jamaican small farmers' adaptation and coping  
41 strategies, before and after Hurricanes—A case study of hurricane dean. *Sustainability*, **1(4)**, 1366-1387.
- 42 Campbell, J., 2006: *GNS Science Report*. Traditional Disaster Reduction in Pacific Island Communities, GNS,  
43 Wellington, N.Z., 1-46 pp.
- 44 Campbell, J.D., M.A. Taylor, T.S. Stephenson, R.A. Watson, and F.S. Whyte, 2010: Future climate of the caribbean  
45 from a regional climate model . *International Journal of Climatology*, **31**, DOI: 10.1002/joc.2200.
- 46 Campbell, S.J., L.J. McKenzie, and S.P. Kerville, 2006: Photosynthetic responses of seven tropical seagrasses to  
47 elevated seawater temperature. *Journal of Experimental Marine Biology and Ecology*, **330(2)**, 455-468.
- 48 Cantin, N.E., A.N. Cohen, K.B. Karnauskas, A.N. Tarrant, and D.C. McCorkle, 2010: Ocean warming slows coral  
49 growth in the central red sea. *Science*, **329(5989)**, 322-325.
- 50 Cardona, O.D., 2007: Indicators of Disaster Risk and Risk Management, Inter-American Development Bank,  
51 Washington D.C., .
- 52 Carilli, J.E., R.D. Norris, B. Black, S.M. Walsh, and M. McField, 2010: Century-scale records of coral growth rates  
53 indicate that local stressors reduce coral thermal tolerance threshold. *Global Change Biology*, **16(4)**, 1247-1257.

- 1 Carpenter, R.C. and P.J. Edmunds, 2006: Local and regional scale recovery of diadema promotes recruitment of  
2 scleractinian corals. *Ecology Letters*, **9(3)**, 268-277.
- 3 Carr, L.M. and W.D. Heyman, 2009: Jamaica bound? marine resources and management at a crossroads in antigua  
4 and barbuda. *The Geographical Journal*, **175(1)**, 17-38.
- 5 Cashman, A., L. Nurse, and J. Charlery, 2010: Climate change in the caribbean: The water management implications.  
6 *Journal of Environment and Development*, **19(1)**, 42-67.
- 7 Caujape-Castella, J., A. Tye, D.j. Crawford, A. Santos-Guerra, A. Sakai, K. Beaver, W. Lobin, F.B.W. Florens, M.  
8 Moura, R. Jardim, I. Gomes, and C. Kueffer, 2010: Conservation of oceanic floras: Present and future global  
9 challenges. *Perspectives in Plant Ecology, Evolution and Systematics*, **12(2)**, 107-129.
- 10 Cazenave, A. and W. Llovel, 2010: Contemporary sea level rise. *Annual Review of Marine Science*, **2**, 145-173.
- 11 Cazenave, A. and F. Remy, 2011: Sea level and climate: Measurements and causes of changes. *Wiley*  
12 *Interdisciplinary Reviews: Climate Change*, **2(5)**, 647-662.
- 13 CEEBIP., 2012: Briefing Note: Small Island Developing States (SIDS) Sustainability Energy Initiative, Caribbean  
14 Environment and Energy Business Platform, .
- 15 Cervino, J.M., F.L. Thompson, B. Gomez-Gil, E.A. Lorence, T.J. Goreau, R.L. Hayes, K.B. Winiarski-Cervino,  
16 G.W. Smith, K. Huguen, and E. Bartels, 2008: The vibrio core group induces yellow band disease in caribbean  
17 and indo-pacific reef-building corals. *Journal of Applied Microbiology*, **105(5)**, 1658-1671.
- 18 Chan, W.H., Y.L. Mak, J.J. Wu, L. Jin, W.H. Sit, J.C.W. Lam, Y. Sadovy de Mitcheson, L.L. Chan, P.K.S. Lam,  
19 and M.B. Murphy, 2011: Spatial distribution of ciguateric fish in the republic of kiribati. *Chemosphere*, **84(1)**,  
20 117-123.
- 21 Chapuis, J.L., Y. Frenot, and M. Lebouvier, 2004: Recovery of native plant communities after eradication of rabbits  
22 from the subantarctic kerguelen islands, and influence of climate change. *Biological Conservation*, **117(2)**, 167-  
23 179.
- 24 Charlery, J. and L. Nurse, 2010: Areal downscaling of global climate models: An approach that avoids data  
25 remodelling. *Climate Research*, **43(3)**, 2412-249.
- 26 Chaves, L.F. and J.M. Koenraadt, 2010: Climate change and highland malaria: Fresh air in a hot debate. *The*  
27 *Quarterly Review of Biology*, **85(1)**, 27-55.
- 28 Chen, F., N. Duic, L.M. Alves, and M.G. Carvalho, 2007: Renewislands—Renewable energy solutions for islands.  
29 *Renewable and Sustainable Energy Reviews*, **8(11)**, 1888-1902.
- 30 Chen, I., H.J. Shiu, S. Benedick, J.D. Holloway, V.K. Chey, H.S. Barlow, J.K. Hill, and C.D. Thomas, 2009:  
31 Elevation increases in moth assemblages over 42 years on a tropical mountain. *Proceedings of the National*  
32 *Academy of Sciences*, **106(5)**, 1479.
- 33 Chen, A., M. Taylor, A. Centella, and D. Farrell, 2008: *CANARI Technical Reports*. Climate Trends and Scenarios,  
34 1-70 pp.
- 35 Chown, S.L. and P. Convey, 2007: Spatial and temporal variability across life's hierarchies in the terrestrial  
36 antarctic. *Philosophical Transactions of the Royal Society B: Biological Sciences*, **362(1488)**, 2307-2331.
- 37 Christenhusz, M.J.M. and T.K. Toivonen, 2008: Giants invading the tropics: The oriental vessel fern, angiopteris  
38 evecta (marattiaceae). *Biological Invasions*, **10(8)**, 1215-1228.
- 39 Church, J.A. and N.J. White, 2011: Sea-level rise from the late 19th to the early 21st century. *Surveys in Geophysics*,  
40 **32(4-5)**, 585-602.
- 41 Cochard, R., S.L. Ranamukhaarachchi, G.P. Shivakoti, O.V. Shipin, P.J. Edwards, and K.T. Seeland, 2008: The  
42 2004 tsunami in aceh and southern thailand: A review on coastal ecosystems, wave hazards and vulnerability.  
43 *Perspectives in Plant Ecology Evolution and Systematics*, **10(1)**, 3-40.
- 44 Connolly, R.M., 2009: Seagrass. In: *A marine climate change impacts and adaptation report card for australia 2009*  
45 [Poloczanska, E.S., A.J. A.J. Hobday, and A.J. Richardson(eds.)]. NCCARF Publication 05/09, ISBN 978-1-  
46 921609-03-9, .
- 47 Cournil, C. and F. Gemenne, 2010: Les populations insulaires face aux changements climatique: Des migrations a  
48 anticiper. *Vertigo*, **10(3)**, DOI : 10.4000/vertigo.10482.
- 49 Coutinho, R., J. Pacheco, N. Wallenstein, A. Pimentel, R. Marques, and R. Silva, 2009: Integrating geological  
50 knowledge in planning methods for small islands coastal plans. *Journal of Coastal Research*, , 1199-1203.
- 51 Croquer, A. and E. Weil, 2009: Changes in caribbean coral disease prevalence after the 2005 bleaching event.  
52 *Diseases of Aquatic Organisms*, **87(1-2)**, 33-43.
- 53 Croquer, A. and E. Weil, 2009: Spatial variability in distribution and prevalence of caribbean scleractinian coral and  
54 octocoral diseases. II. genera-level analysis. *Diseases of Aquatic Organisms*, **83(3)**, 209-222.

- 1 Crump, J., 2008: Snow, sand, ice and sun: Climate change and equity in the arctic and small island developing  
2 states. *Sustainable Development Law and Policy*, **8(3)**, 8-13.
- 3 Cruz, M., R. Aguiar, A. Correia, T. Tavares, J. Pereira, and F. Santos, 2009: Impacts of climate change on the  
4 terrestrial ecosystems of madeira. *International Journal of Design and Nature and Ecodynamics*, **4(4)**, 413-422.
- 5 Daly, M., N. Poutasi, F. Nelson, and J. Kohlhasse, 2010: Reducing the climate vulnerability of coastal communities  
6 in samoa. *Journal of International Development*, **22(2)**, 265-281.
- 7 Danovaro, R., S.F. Umani, and A. Pusceddu, 2009: Climate change and the potential spreading of marine mucilage  
8 and microbial pathogens in the mediterranean sea. *Plos One*, **4(9)**, e7006.
- 9 DARA and the Climate Vulnerable Forum, 2010: Climate Vulnerability Monitor 2010: The State of the Climate  
10 Crisis, DARA, Madrid, Spain, .
- 11 Dawson, J.L. and S.G. Smithers, 2010: Shoreline and beach volume change between 1967 and 2007 at raine island,  
12 great barrier reef, australia. *Global and Planetary Change*, **72(3)**, 141-154.
- 13 De'ath, G., J.M. Lough, and K.C. Fabricius, 2009: Declining coral calcification on the great barrier reef. *Science*,  
14 **323(5910)**, 116-119.
- 15 Department of Meteorology (Maldives), 2007: The Unusually Strong Tidal Waves Hit Maldives, 15-18 may, 12 pp.
- 16 Didham, R.K., J.M. Tylianakis, M.A. Hutchison, R.M. Ewers, and N.J. Gemmill, 2005: Are invasive species the  
17 drivers of ecological change? *Trends in Ecology & Evolution*, **20(9)**, 470-474.
- 18 Donato, D.C., J.B. Kauffman, D. Murdiyarsa, S. Kurnianto, M. Stdham, and M. Kanninen, 2011: Mangroves among  
19 the most carbon-rich forests in the tropics. *Nature Geoscience*, **4**, 293-297.
- 20 Donelson, J.M., P.L. Munday, M.I. McCormick, N.W. Pankhurst, and P.M. Pankhurst, 2010: Effects of elevated  
21 water temperature and food availability on the reproductive performance of a coral reef fish. . *Marine Ecology*  
22 *Progress Series*, **401**, 233-243.
- 23 Donn, W.L. and W.T. McGuinness, 1959: Barbados storm swell. *Journal of Geophysical Research*, **64(12)**, 2341-  
24 2349.
- 25 Donner, S.D., 2009: Coping with commitment: Projected thermal stress on coral reefs under different future  
26 scenarios. *PloS ONE*, **4(6)**, e5712.
- 27 Donner, S.D., T. Kirata, and C. Vieux, 2010: Recovery from the 2004 coral bleaching event in the gilbert islands,  
28 kiribati. *Atoll Reseach Bulletin.*, **(587)**, 1-25.
- 29 Dornan, M., 2009: Methods for assessing the contribution of renewable technologies to energy security: The  
30 electricity sector of fiji. *Pacific Economic Bulletin*, **24(3)**, 71-91.
- 31 Dornan, M., 2011: Solar-based rural electrification policy design: The renewable energy service company (RESCO)  
32 model in fiji. *Renewable Energy*, **36(2)**, 797-803.
- 33 Dulal, H.B., K.U. Shah, and N. Ahmad, 2009: Social equity considerations in the implementation of caribbean  
34 climate change adaptation policies. *Sustainability*, **1(3)**, 363-383.
- 35 Dumaru, P., 2010: Community-based adaptation: Enhancing community adaptive capacity in druadrua island, fiji.  
36 *Wiley Interdisciplinary Reviews Climate Change*, **1(5)**, 751-763.
- 37 Eakin, C.M., J.M. Lough, and S.F. Heron, 2009: Climate variability and change: Monitoring data and evidence for  
38 increased coral bleaching stress. *Ecological Studies*, **205**, 41-67.
- 39 Eakin, C.M., J.A. Morgan, S.F. Heron, T.B. Smith, G. Liu, L. Alvarez-Filip, B. Baca, E. Bartels, C. Bastidas, C.  
40 Bouchon, M. Brandt, A.W. Bruckner, L. Bunkley-Williams, A. Cameron, B.D. Causey, M. Chiappone, T.R.L.  
41 Christensen, M.J.C. Crabbe, O. Day, E. de la Guardia, G. Diaz-Pulido, D. DiResta, D.L. Gil-Agudelo, D.S.  
42 Gilliam, R.N. Ginsburg, S. Gore, H.M. Guzman, J.C. Hendee, E.A. Hernandez-Delgado, E. Husain, C.F.G.  
43 Jeffrey, R.J. Jones, E. Jordan-Dahlgren, L.S. Kaufman, D.I. Kline, P.A. Kramer, J.C. Lang, D. Lirman, J.  
44 Mallela, C. Manfrino, J.P. Marechal, K. Marks, J. Mihaly, W.J. Miller, E.M. Mueller, E.M. Muller, C.A.O.  
45 Toro, H.A. Oxenford, D. Ponce-Taylor, N. Quinn, K.B. Ritchie, S. Rodriguez, A.R. Ramirez, S. Romano, J.F.  
46 Samhuri, J.A. Sanchez, G.P. Schmahl, B.V. Shank, W.J. Skirving, S.C.C. Steiner, E. Villamizar, S.M. Walsh,  
47 C. Walter, E. Weil, E.H. Williams, K.W. Roberson, and Y. Yusuf, 2010: Caribbean corals in crisis: Record  
48 thermal stress, bleaching, and mortality in 2005. *PloS One*, **5(11)**, 1-9.
- 49 Ebi, K.L., N.D. Lewis, and C. Corvalan, 2006: Climate variability and change and their potential health effects in  
50 small island states: Information for adaptation planning in the health sector. *Environmental Health Perspectives*,  
51 **114(12)**, 1957-1963.
- 52 Ellison, J.C., 1993: Mangrove retreat with rising sea-level, bermuda. *Estuarine, Coastal and Shelf Science*, **37(1)**,  
53 75-87.
- 54 Ellison, J.C., 2009: Wetlands of the pacific island region. *Wetlands Ecology and Management*, **17(3)**, 169-206.

- 1 Emmanuel, K. and B. Spence, 2009: Climate change implications for water resource management in caribbean  
2 tourism. *Worldwide Hospitality and Tourism Themes*, **1(3)**, 252-268.
- 3 Englund, R.A., 2008: Invasive species threats to native aquatic insect biodiversity and conservation measures in  
4 hawaii and french polynesia. *Journal of Insect Conservation*, **12(3-4)**, 415-428.
- 5 Esty, D.C., M. Levy, T. Srebotnjak, and A. Sherbinin, 2005: 2005 Environmental Sustainability Index:  
6 Benchmarking National Environmental Stewardship, Yale Center for Environmental Law and Policy, New  
7 Haven, Connecticut USA, .
- 8 Farbotko, C., 2011: Wishfull sinking: Disappearing islands, climate refugees and cosmopolitan experimentation.  
9 *Asia Pacific Viewpoint*, **51**, 47-60.
- 10 Fazey, I., N. Pettorelli, J. Kenter, D. Wagatora, and D. Schuett, 2011: Maladaptive trajectories of change in makira,  
11 solomon islands. *Global Environmental Change*, **21(4)**, 1275-1289.
- 12 Feagin, R.A., N. Mukherjee, K. Shanker, A.H. Baird, J. Cinner, A.M. Kerr, N. Koedam, A. Sridhar, R. Arthur, L.P.  
13 Jayatissa, D. Lo Seen, M. Menon, S. Rodriguez, M. Shamsuddoha, and F. Dahdouh-Guebas, 2010: Shelter from  
14 the storm? use and misuse of coastal vegetation bioshields for managing natural disasters. *Conservation Letters*,  
15 **3(1)**, 1-11.
- 16 Fish, M.R., I.M. Cote, J.A. Horrocks, B. Mulligan, A.R. Watkinson, and A.P. Jones, 2008: Construction setback  
17 regulations and sea-level rise: Mitigating sea turtle nesting beach loss. *Ocean & Coastal Management*, **51(4)**,  
18 330-341.
- 19 Fletcher, C.H., C. Bochicchio, C. Conger, M. Engels, F. Feirstein, N. Frazer, C. Glenn, R.W. Grigg, E.E. Grossman,  
20 and J.N. Harvey, 2008: Geology of hawaii reefs. In: *Coral reefs of the USA* [Riegl, B. and R.E. Dodge(eds.)].  
21 Springer, pp. 435-487.
- 22 Foolmaun, R.K., D.S. Chamilall, and G. Munhurrun, 2011: Overview of non-hazardous solid waste in the small  
23 island state of mauritius. *Resources, Conservation and Recycling*, **5(11)**, 966-972.
- 24 Ford, M., 2012: Shoreline changes on an urban atoll in the central pacific ocean: Majuro atoll, marshall islands.  
25 *Journal of Coastal Research*, **28(1)**, 11-22.
- 26 Fox, J.C., C.K. Yosi, P. Nimiago, F. Oavika, J.N. Pokana, K. Lavong, and R.J. Keenan, 2010: Assessment of above  
27 ground carbon in primary and selectively harvested tropical forest in papua new guinea. *Biotropica*, **42(4)**, 410-  
28 419.
- 29 Freed, L.A., R.L. Cann, M.L. Goff, W.A. Kuntz, and G.R. Bodner, 2005: Increase in avian malaria at upper  
30 elevations in hawaii. *The Condor*, **107**, 753-764.
- 31 Frenot, Y., S.L. Chown, J. Whinam, P.M. Selkirk, P. Conve, M. Skotnicki, and D.M. Bergstrom, 2005: Biological  
32 invasions in the antarctic: Extent, impacts and implications. *Biological Reviews*, **80**, 45-72.
- 33 Gaigher, R., M. Samways, J. Henwood, and K. Jolliffe, 2011: Impact of a mutualism between an invasive ant and  
34 honeydew-producing insects on a functionally important tree on a tropical island. *Biological Invasions*, , 1-5.
- 35 Gamble, D.W., D. Campbell, T.L. Allen, D. Barker, S. Curtis, D. McGregor, and J. Popke, 2010: Climate change,  
36 drought, and jamaican agriculture: Local knowledge and the climate record. *Annals of the Association of*  
37 *American Geographers*, **100(4)**, 880-893.
- 38 Gareth J. Williams, G.J., I.S. Ingrid S. Knappa, J.E. Maragos, and S.K. Davy, 2010: Modeling patterns of coral  
39 bleaching at a remote central pacific atoll. *Marine Pollution Bulletin*, **60(9)**, 1467-1476.
- 40 Gemenne, F., 2011: Climate-induced population displacements in a 4° C world. *Philosophical Transactions of the*  
41 *Royal Society A: Mathematical, Physical and Engineering Sciences*, **369(1934)**, 182-195.
- 42 Georgei, M., J. Krueger, and B. Henning, 2010: Concentrating solar power in sustainable tourism. In: *Management*  
43 *of natural resources, sustainable development and ecological hazards*. [Brebba, C.A., N. Jovanovic, and E.  
44 Tiezzi(eds.)]. pp. 283-294.
- 45 Gero, A., K. Méheux, and D. Dominey-Howes, 2011: Integrating community based disaster risk reduction and  
46 climate change adaptation: Examples from the pacific. *Natural Hazards and Earth System Sciences*, **11(1)**, 101-  
47 113.
- 48 Gillespie, T.W., J. Chu, and S. Pau, 2008: Non-native plant invasion of the hawaiian islands. *Geography Compass*,  
49 **2(5)**, 1241-1265.
- 50 Gilman, E.L., J. Ellison, N.C. Duke, and C. Field, 2008: Threats to mangroves from climate change and adaptation  
51 options: A review. *Aquatic Botany*, **89(2)**, 237-250.
- 52 Gledhill, D.K., R. Wanninkhof, F.J. Millero, and C.M. Eakin, 2008: Ocean acidification of the greater caribbean  
53 region, 1996-2006. *Journal of Geophysical Research, Oceans*, **113(C10031)**, doi:10.1029/2007JC004629.

- 1 Goodman, J., J. Maschinski, P. Hughes, J. McAuliffe, J. Roncal, D. Powell, and L.O. Sternberg, 2012: Differential  
2 response to soil salinity in endangered key tree cactus: Implications for survival in a changing climate. *PLoS*  
3 *ONE*, **7(3)**, e32528.
- 4 Gossling, S. and K.P. Schumacher, 2010: Implementing carbon neutral destination policies: Issues from the  
5 seychelles. *Journal of Sustainable Tourism*, **18(3)**, 377-391.
- 6 Gössling, S., M. Bredberg, A. Randow, E. Sandström, and P. Svensson, 2006: Tourist perceptions of climate  
7 change: A study of international tourists in zanzibar. *Current Issues in Tourism*, **9(4)**, 419-435.
- 8 Gravelle, G. and N. Mimura, 2008: Vulnerability assessment of sea-level rise in viti levu, fiji islands. *Sustainability*  
9 *Science*, **3(2)**, 171-180.
- 10 Greaver, T.L. and L.S.L. Sternberg, 2010: Decreased precipitation exacerbates the effects of sea level on coastal  
11 dune ecosystems in open ocean islands. *Global Change Biology*, **16(6)**, 1860-1869.
- 12 Griffin, D.W., 2007: Atmospheric movement of microorganisms in clouds of desert dust and implications for human  
13 health. *Clinical Microbiology Reviews*, **20(3)**, 459-477.
- 14 Gritti, E., B. Smith, and M. Sykes, 2006: Vulnerability of mediterranean basin ecosystems to climate change and  
15 invasion by exotic plant species. *Journal of Biogeography*, **33(1)**, 145-157.
- 16 Gulev, S.K. and V. Grigorieva, 2006: Variability of the winter wind waves and swell in the north atlantic and north  
17 pacific as revealed by the voluntary observing ship data. *Journal of Climate*, **19(21)**, 5667-5685.
- 18 Hansen, L., J. Hoffman, C. Drews, and E. Mielbrecht, 2010: Designing climate-smart conservation: Guidance and  
19 case studies. *Conservation Biology*, **24(1)**, 63-69.
- 20 Harangoza, S.A., 1992: Flooding in the maldives and its implications for the global sea level rise debate. In: *Sea*  
21 *level changes: Determination and effects*. [Woodworth, P.L., D.T. Pugh, J.G. DeRonde, R.G. Warrick, and J.  
22 Hannah(eds.)]. International Union of Geodesy and Geophysics and the American Geophysical Union, pp. 95-  
23 99.
- 24 Hardman, E.R., N.S. Stampfli, L. Hunt, S. Perrine, A. Perry, and J.S.J. Raffin, 2007: The impacts of coral bleaching  
25 in rodrigues, western indian ocean. *Atoll Research Bulletin*, **(555)**, 10.
- 26 Harmsen, E.W., N.L. Miller, N.J. Schlegel, and J.E. Gonzalez, 2010: Seasonal climate change impacts on  
27 evapotranspiration, precipitation deficit and crop yield in puerto rico. *Agricultural Water Management*, **96**,  
28 1085-1095.
- 29 Harris, A., G. Manahira, A. Sheppard, and Gough, C., Sheppard, C, 2010: Demise of Madagascar's once great  
30 barrier reef: Changes in coral reef conditions over 40 years. *Atoll Research Bulletin*, **(574)**, 1-16.
- 31 Heltberg, R., P.B. Siegel, and S.L. Jorgensen, 2009: Addressing human vulnerability to climate change: Toward a  
32 'no-regrets' approach. *Global Environmental Change*, **19(1)**, 89-99.
- 33 Herrmann-Storck, C., D. Postic, I. Lamaury, and J.M. Perez, Changes in epidemiology of leptospirosis in 2003-2004,  
34 a two el nino southern oscillation period, guadaloupe archipelago, french west indies. *Epidemiology and*  
35 *Infection*, **136**, 1407-1415.
- 36 Herweijer, C., N. Ranger, and R.E.T. Ward, 2009: Adaptation to climate change: Threats and opportunities for the  
37 insurance industry. *The Geneva Papers on Risk and Insurance-Issues and Practice*, **34(3)**, 360-380.
- 38 Hoegh-Guldberg, O., P.J. Mumby, A.J. Hooten, R.S. Steneck, P. Greenfield, E. Gomez, C.D. Harvell, P.F.H. Sale,  
39 A. Dubi, and M.E. Hatziolos, 2007: Coral reefs under rapid climate change and ocean acidification. *Science*,  
40 **318(1737)**, 10.1126/science.1152509.
- 41 Howard, G., K. Charles, K. Pond, A. Brookshaw, R. Hossain, and J. Bartram, 2010: Securing 2020 vision for 2030:  
42 Climate change and ensuring resilience in water and sanitation services. *Journal of Water and Climate Change*,  
43 **1(1)**, 2-16.
- 44 Hughes, T.P., A.H. Baird, D.R. Bellwood, M. Card, S.R. Connolly, C. Folke, R. Grosberg, O. Hoegh-Guldberg, J.  
45 Jackson, J. Kleypas, J.M. Lough, P. Marshall, M. Nyström, S.R. S. R. Palumbi, J.M. J. M. Pandolfi, B. Rosen,  
46 and J. Roughgarden, 2003: Climate change, human impacts, and the resilience of coral reefs. *Science*,  
47 **301(5635)**, 929-933.
- 48 Idjadi, J.A., R.N. Haring, and W.F. Precht, 2010: Recovery of the sea urchin diadema antillarum promotes  
49 scleractinian coral growth and survivorship on shallow jamaican reefs. *Marine Ecology-Progress Series*, **403**,  
50 91-100.
- 51 Jarvis, R., 2010: Sinking nations and climate change adaptation strategies. *Seattle Journal of Social Justice*, **9(1)**,  
52 447-486.
- 53 Joe, S.M. and C.C. Daehler, 2008: Invasive slugs as under-appreciated obstacles to rare plant restoration: Evidence  
54 from the hawaiian islands. *Biological Invasions*, **10(2)**, 245-255.

- 1 Jones, G.P., M.I. McCormick, M. Srinivasan, and J.V. Eagle, 2004: Coral decline threatens fish biodiversity in  
2 marine reserves. *Proceedings of the National Academy of Sciences*, **101(21)**, 8251-8253.
- 3 Jump, A.S., T.J. Huang, and C.H. Chou, 2012: Rapid altitudinal migration of mountain plants in taiwan and its  
4 implications for high altitude biodiversity. *Ecography*, **35(3)**, 204-210.
- 5 Jury, M.R. and A. Winter, 2010: Warming of an elevated layer over the caribbean. *Climatic Change*, **99**, 247-259.
- 6 Kaldellis, J.K., 2008: Integrated electrification solution for autonomous electrical networks on the basis of RES and  
7 energy storage configurations. *Energy Conversion and Management*, **49(12)**, 3708-3720.
- 8 Kaldellis, J.K., D. Zafirakis, E.L. Kaldelli, and K. Kavadias, 2009: Cost benefit analysis of a photovoltaic-energy  
9 storage electrification solution for remote islands. *Renewable Energy*, **34(5)**, 1299-1311.
- 10 Kelman, I., J. Lewis, J.C. Gaillard, and J. Mercer, 2011: Participatory action research for dealing with disasters on  
11 islands. *Island Studies Journal*, **6(1)**, 59-86.
- 12 Kelman, I. and J. West, 2009: Climate change and small island developing states: A critical review. *Ecological and  
13 Environmental Anthropology*, **5(1)**, 1-16.
- 14 Kelman, I., 2010: Introduction to climate, disasters and international development. *Journal of International  
15 Development*, **22(2)**, 208-217.
- 16 Kench, P.S. and R.W. Brander, 2006: Response of reef island shorelines to seasonal climate conditions: South  
17 maalhosmadulu atoll, maldives. *Journal of Geophysical Research*, **111**(doi:10.1029/2005JF000323).
- 18 Kench, P.S., S.G. Smithers, R.F. McLean, and S.L. Nichol, 2009: Holocene reef growth in the maldives: Evidence  
19 of a mid-holocene sea-level highstand in the central indian ocean. *Geology*, **37(5)**, 455-458.
- 20 Kench, P.S., R.F. McLean, and S. Nichol, 2005: New model of reef-island evolution: Maldives, indian ocean.  
21 *Geology*, **33(2)**, 47-60.
- 22 Kench, P.S., S. Nichol, S. Smithers, R.F. McLean, and R. Brander, 2008: Tsunami as agents of geomorphic change  
23 in mid-ocean reef islands. *Geomorphology*, **95**, 361-383.
- 24 Kenis, M., M.A. Auger-Rozenberg, A. Roques, L. Timms, C. Pere, M. Cock, J. Settele, S. Augustin, and C. Lopez-  
25 Vaamonde, 2009: Ecological effects of invasive alien insects. *Biological Invasions*, **11(1)**, 21-45.
- 26 Kingsford, R., J. Watson, C. Lundquist, O. Venter, L. Hughes, E. Johnston, J. Atherton, M. Gawel, D. Keith, B.  
27 Mackey, C. Morley, H.B. Possingham, B. Raynor, H.F. Recher, and K.A. Wilson, 2009: Major conservation  
28 policy issues for biodiversity in oceania. *Conservation Biology*, **23(4)**, 834-840.
- 29 Klein, R., S. Ericksen, L. Ness, A. Hammill, T. Tanner, C. Robledo, and K. O'Brien, 2007: Portfolio screening to  
30 support the mainstreaming of adaptation to climate change into development assistance. *Climatic Change*,  
31 **84(1)**, 23-44.
- 32 Koch, M.S. and J.M. Erskine, 2001: Sulphide as a phototoxin to the tropical seagrass *thalassi testudinum*:  
33 Interactions with light, salinity and temperature. *Journal of Experimental Marine Biology and Ecology*, **266**, 81-  
34 95.
- 35 Krajačić, G., N. Duić, B. Vad Mathiesen, and M.D.G. Carvalho, 2010: Smart energy storages for integration of  
36 renewables in 100% independent energy systems. *Chemical Engineering Transactions*, **21**, 391-396.
- 37 Krajačić, G., R. Martins, A. Busuttill, N. Duić, and M. da Graça Carvalho, 2008: Hydrogen as an energy vector in the  
38 islands' energy supply. *International Journal of Hydrogen Energy*, **33(4)**, 1091-1103.
- 39 Krauss, K.W., J.A. Allen, and D.R. Cahoon, 2003: Differential rates of vertical accretion and elevation change  
40 among aerial root types in micronesian mangrove forests. *Estuarine, Coastal and Shelf Science*, **56**, 251-259.
- 41 Krauss, K.W., D.R. Cahoon, J.A. Allen, K.C. Ewel, J.C. Lynch, and N. Cormier, 2010: Surface elevation change  
42 and susceptibility of different mangrove zones to sea-level rise on pacific high islands of micronesia.  
43 *Ecosystems*, **13(1)**, 129-143.
- 44 Kudo, G., Y. Nishikawa, T. Kasagi, and S. Kosuge, 2004: Does seed production of spring ephemerals decrease  
45 when spring comes early? *Ecological Research*, **19(2)**, 255-259.
- 46 Kueffer, C., C.C. Daehler, C.W. Torres-Santana, C. Lavergne, J.Y. Meyer, R. Otto, and L. Silva, 2010: A global  
47 comparison of plant invasions on oceanic islands. *Perspectives in Plant Ecology Evolution and Systematics*,  
48 **12(2)**, 145-161.
- 49 Kuffner, I.B., A.J. Andersson, P.L. Jokiel, K.S. Rodgers, and F.T. Mackenzie, 2007: Decreased abundance of  
50 crustose coralline algae due to ocean acidification. *Nature Geoscience*, **1**, 114-117.
- 51 Kuruppu, N. and D. Liverman, 2011: Mental preparation for climate adaptation: The role of cognition and culture in  
52 enhancing adaptive capacity of water management in kiribati. *Global Environmental Change*, **21(2)**, 657-669.
- 53 Lata, S. and P. Nunn, 2012: Misperceptions of climate-change risk as barriers to climate-change adaptation: A case  
54 study from the rewa delta, fiji. *Climatic Change*, **110**, 169-186.

- 1 Le Roux, P.C., M.A. McGeoch, M.J. Nyakatia, and S.L. Chown, 2005: Effects of a short-term climate change  
2 experiment on a sub-Antarctic keystone plant species. *Global Change Biology*, **11(10)**, 1628-1639.
- 3 Le Roux, J.J., A.M. Wiczorek, and J.Y. Meyer, 2008: Genetic diversity and structure of the invasive tree *Miconia*  
4 *calvescens* in Pacific islands. *Diversity and Distributions*, **14(6)**, 935-948.
- 5 Lefale, P., 2010: *Ua afa le aso* stormy weather today: Traditional ecological knowledge of weather and climate. the  
6 Samoa experience. *Climatic Change*, **100(2)**, 317-335.
- 7 Lessios, H.A., 1988: Mass mortality of *Diadema antillarum* in the Caribbean: What have we learned? *Annual Review*  
8 *of Ecology and Systematics*, **19(1)**, 371-393.
- 9 Lessios, H.A., 1995: *Diadema antillarum* 10 years after mass mortality: Still rare, despite help from a competitor.  
10 *Proceedings of the Royal Society of London. Series B: Biological Sciences*, **259(1356)**, 331-337.
- 11 Lessios, H.A., D.R. Robertson, and J.D. Cubitt, 1984: Spread of *Diadema* mass mortality through the Caribbean.  
12 *Science*, **226(4672)**, 335-337.
- 13 Linnerooth-Bayer, J., R. Mechler, and S. Hochrainer, 2011: Insurance against losses from natural disasters in  
14 developing countries. Evidence, gaps and the way forward. *Journal of Integrated Disaster Risk Management*,  
15 **1(1)**, 1-23.
- 16 Linnerooth-Bayer, J., K. Warner, C. Bals, P. Höpfe, I. Burton, T. Loster, and A. Haas, 2009: Insurance, developing  
17 countries and climate change. *The Geneva Papers on Risk and Insurance-Issues and Practice*, **34(3)**, 381-400.
- 18 Llewellyn, L.E., 2010: Revisiting the association between sea surface temperature and the epidemiology of fish  
19 poisoning in the South Pacific: Reassessing the link between ciguatera and climate change. *Toxicon*, **56(5)**, 691-  
20 697.
- 21 Lopez-Marrero, T., 2010: An integrative approach to study and promote natural hazards adaptive capacity: A case  
22 study of two flood-prone communities in Puerto Rico. *Geographical Journal*, **176**, 150-163.
- 23 Lough, J.M. and M.J.H. Van Oppen, 2005: Introduction: Coral bleaching – patterns, processes, causes and  
24 consequences. *Ecological Studies*, **205**, 1-5.
- 25 Lovell, S., 2011: *IHDP Update (Human Health and Global Environmental Change)*. Health Governance and the  
26 Impact of Climate Change on Pacific Small Island Developing States, International Human Dimensions  
27 Program, 50-55 pp.
- 28 Lo-Yat, A., S.D. Simpson, M. Meekan, D. Lecchini, E. Martinez, and R. Galzin, 2011: Extreme climatic events  
29 reduce ocean productivity and larval supply in a tropical reef ecosystem. *Global Change Biology*, **17(4)**, 1695-  
30 1702.
- 31 Maceda, E.A., J.C. Gaillard, E. Stasiak, V. Le Masson, and I. Le Berre, 2009: Experimental use of participatory 3-  
32 dimensional models in island community-based disaster risk management. *Shima: The International Journal of*  
33 *Research into Island Cultures*, **3(1)**, 46-58.
- 34 Maina, J., T.R. McClanahan, V. Venus, M. Ateweberhan, and J. Madin, 2011: Global gradients of coral exposure to  
35 environmental stresses and implications for local management. *PLoS One*, **6(8)**, e23064.
- 36 Maplecroft, 2012: *The climate change and environmental risk atlas 2012* Maplecroft, Bath, UK, .
- 37 Marba, N. and C.M. Duarte, 2010: Mediterranean warming triggers seagrass (*Posidonia oceanica*) shoot mortality.  
38 *Global Change Biology*, **16(8)**, 2366-2375.
- 39 Martens, P., R.S. Kovats, S. Nijhof, P. de Vries, M.T.J. Livermore, D.J. Bradley, and et al., Global environmental  
40 Change: Climate change and future populations at risk of malaria. *1999*, **9** (Suppl 1), S89-S107.
- 41 Martins, P., J. Rosado-Pinto, M. Do Céu Teixeira, N. Neuparth, O. Silva, H. Tavares, J.L. Spencer, D. Mascarenhas,  
42 A.L. Papoila, N. Khaltaev, and I. Annesi-Maesano, 2009: Under-report and underdiagnosis of chronic  
43 respiratory diseases in an African country. *Allergy*, **64(7)**, 1061-1067.
- 44 Maunsell Australia., 2009: Climate Change Risk Assessment for the Australian Indian Ocean Territories,  
45 Commonwealth Attorney General's Department, Canberra, Australia, 1-93 pp.
- 46 McClanahan, T.R., E. Weil, and J. Maina, 2009: Strong relationship between coral bleaching and growth anomalies  
47 in massive porites. *Global Change Biology*, **15(7)**, 1804-1816.
- 48 McKee, K.L., D.R. Cahoon, and I.C. Feller, 2007: Caribbean mangroves adjust to rising sea level through biotic  
49 controls on change in soil elevation. *Global Ecology and Biogeography*, **16(5)**, 556.
- 50 McLeman, R.A. and L.M. Hunter, 2010: Migration in the context of vulnerability and adaptation to climate change:  
51 Insights from analogues. *Wiley Interdisciplinary Reviews Climate Change*, **1(3)**, 450-461.
- 52 McLeod, E., R. Salm, A. Green, and J. Almany, 2009: Designing marine protected area networks to address the  
53 impacts of climate change. *Frontiers in Ecology and the Environment*, **7(7)**, 362-370.



- 1 McNamara, D. and B. Werner, 2008: Coupled barrier island–resort model: 1. emergent instabilities induced by  
2 strong human-landscape interactions. *Journal of Geophysical Research*, **113(F1)**, F01016.
- 3 McNamara, K.E. and R. Westoby, 2011: Local knowledge and climate change adaptation on erub island, torres  
4 strait. *Local Environment*, , 887-901.
- 5 Mercer, J., D. Dominey-Howes, I. Kelman, and K. Lloyd, 2007: The potential for combining indigenous and  
6 western knowledge in reducing vulnerability to environmental hazards in small island developing states.  
7 *Environmental Hazards*, **7(4)**, 245-256.
- 8 Merrifield, M., S. Merrifield, and G. Mitchum, 2009: An anomalous recent acceleration of global sea level rise.  
9 *Journal of Climate*, **22** (DOI: 10.1175/2009JCLI2985.1), 5781.
- 10 Mertz, O., T.B. Bruun, B. Fog, K. Rasmussen, and J. Agergaard, 2010: Sustainable land use in tikopia: Food  
11 production and consumption in an isolated agricultural system. *Singapore Journal of Tropical Geography*,  
12 **31(1)**, 10-26.
- 13 Mertz, O., K. Halsnæs, J. Olesen, and K. Rasmussen, 2009: Adaptation to climate change in developing countries.  
14 *Environmental Management*, **43(5)**, 743-752.
- 15 Metz, B., O.R. Davidson, P.R. Bosch, R. Dave, and L.A. Meyers (eds.), 2007: *Mitigation. contribution of working  
16 group III to the fourth assessment report of the intergovernmental panel on climate change*. Cambridge  
17 University Press, Cambridge, UK; New York, NY, USA, .
- 18 Meyer, W.M., K.A. Hayes, and A.L. Meyer, 2008: Giant african snail, *achatina fulica*, as a snail predator. *American  
19 Malacological Bulletin*, **24(1-2)**, 117-119.
- 20 Meyssignac, B., M. Becker, W. Llovel, and A. Cazenave, 2012: An assessment of two-dimensional past sea level  
21 reconstructions over 1950-2009 based on tide-gauge data and different input sea level grids. *Surveys in  
22 Geophysics.*, **33**, DOI:10.1007/s10712-011-9171-x.
- 23 Middleton, N., P. Yiallourous, S. Kleanthous, O. Kolokotroni, J. Schwartz, D.W. Dockery, P. Demokritou, and P.  
24 Koutrakis, 2008: A 10-year time-series analysis of respiratory and cardiovascular morbidity in nicosia, cyprus:  
25 The effect of short-term changes in air pollution and dust storms. *Environmental Health*, **7(39)**.
- 26 Miller, J., E. Muller, C. Rogers, R. Waara, A. Atkinson, K.R.T. Whelan, M. Patterson, and B. Witcher, 2009: Coral  
27 disease following massive bleaching in 2005 causes 60% decline in coral cover on reefs in the US virgin  
28 islands. *Coral Reefs*, **28(4)**, 925-937.
- 29 Mimura, N., L.A. Nurse, R.F. McLean, J. Agard, P. Brigguglio, R. Lefale, R. Payet, and G. Sem, 2007: Small  
30 islands. In: *Climate change 2007: Impacts, adaptation and vulnerability contribution of working group II in the  
31 fourth assessment report of the intergovernmental panel on climate change*. [Parry, M., O.F. Canziani, J.P.  
32 Palutikof, P.J. van der Linden, and C.E. Hanson(eds.)]. Cambridge University Press, Cambridge, U.K., pp. 687-  
33 716.
- 34 Moglia, M., P. Perez, and S. Burn, 2008a: Urbanization and water development in the pacific islands. *Development*,  
35 **51**, 49-55.
- 36 Moglia, M., P. Perez, and S. Burn, 2008b: Water troubles in a pacific atoll town. *Water Policy*, **10(6)**, 613-637.
- 37 Moham, A., A. Cumberpatch, A. Adesiyun, and D.D. Chadee, 2009: Epidemiology of human leptospirosis in  
38 trinidad and tobago, 1996-200: A retrospective study. *Acta Tropica*, **112**, 260-265.
- 39 Mohanty, M., 2012: New renewable energy sources, green energy development and climate change: Implications to  
40 pacific island countries. *Management of Environmental Quality: An International Journal*, **23(3)**, 264-274.
- 41 Monteil, M., 2008: Saharan dust clouds and human health in the english-speaking caribbean: What we know and  
42 don't know. *Environmental Geochemistry and Health*, **30(4)**, 339-343.
- 43 Monteil, M. and R. Antoine, 2009: African dust and asthma in the caribbean: Medical and statistical perspectives.  
44 *International Journal of Biometeorology*, **53(5)**, 379-381.
- 45 Moore, W.R., 2010: The impact of climate change on caribbean tourism demand. *Current Issues in Tourism*, **13(5)**,  
46 495-505.
- 47 Moreno, A. and Becken.S., 2009: A climate change vulnerability assessment methodology for coastal tourism.  
48 *Journal of Sustainable Tourism*, **17(4)**, 473-488.
- 49 Moreno, A., 2010: Mediterranean tourism and climate (change): A survey-based study. *Tourism and Hospitality  
50 Planning & Development*, **7(3)**, 253-265.
- 51 Morrison, K., P. Prieto, A. Dominguez, D. Waltner-Toews, and J. FitzGibbon, 2008: Ciguatera fish poisoning in la  
52 habana, cuba: A study of local social-ecological resilience. *Ecohealth*, **5(3)**, 346-359.
- 53 Mortreux, C. and J. Barnett, 2009: Climate change, migration and adaptation in funafuti, tuvalu. *Global  
54 Environmental Change*, **19(1)**, 105-112.

- 1 Moss, R.H., J.A. Edmonds, K.A.M. Hibbard M.R., S.K. Rose, D.P. van Vuuren, T.R. Carter, S. Emori, M. Kainuma,  
2 T. Kram, G.A. Meehl, J.F.B. Mitchell, N. Nakicenovic, K. Riahi, S.J. Smith, R.J. Stouffer, A.M. Thomson, J.P.  
3 Weyant, and T.J. Wilbanks, 2010: The next generation of scenarios for climate change research and assessment.  
4 *Nature*, **463**, 747-756.
- 5 Munday, P.L., J.M. Leis, J.M. Lough, C.B. Paris, M.J. Kingsford, M.L. Berumen, and J. Lambrechts, 2009: Climate  
6 change and coral reef connectivity. *Coral Reefs*, **28**, 379-395.
- 7 Mycoo, M., 2011: Natural hazard risk reduction: Making st. lucia safe in an era of increased hurricanes and  
8 associated events. *Natural Hazards Review*, **12**, 37-45.
- 9 Myhre, S. and A. Acevedo-Gutierrez, 2007: Recovery of sea urchin diadema antillarum populations is correlated to  
10 increased coral and reduced macroalgal cover. *Marine Ecology-Progress Series*, **329**, 205-210.
- 11 Nelson, D.R., 2011: Adaptation and resilience: Responding to a changing climate. *Wiley Interdisciplinary Reviews:*  
12 *Climate Change*, **2(1)**, 113-120.
- 13 Newton, A., T. Carruthers, and J. Icely, 2012: The coastal syndromes and hotspots on the coast. *Estuarine, Coastal*  
14 *and Shelf Science*, **96(1)**, 39-47.
- 15 Nicholls, R.J. and A. Cazenave, 2010: Sea-level rise and its impact on coastal zones. *Science*, **328(1517)**, DOI:  
16 0.1126/science.1185782.
- 17 Nicholls, R.J., N. Marinova, J.A. Lowe, S. Brown, P. Vellinga, D. De Gusmao, J. Hinkel, and R.S.J. Tol, 2011: Sea-  
18 level rise and its possible impacts given a 'beyond 4 degrees C world' in the twenty-first century. *Philosophical*  
19 *Transactions of the Royal Society A Mathematical Physical and Engineering Sciences*, **369(1934)**, 161-181.
- 20 Nicoll, K.A., R.G. Harrison, and Z. Ulanowski, 2011: Observation of saharan dust electrification. *Environmental*  
21 *Research Letters*, **6**, 014001 doi:10.1088/1748.9326/6/1/014001.
- 22 Novelo-Casanova, D.A. and Suarez G., 2010: Natural and man-made hazards in the cayman islands. *Natural*  
23 *Hazards*, **55(2)**, 441-466.
- 24 Nunn, P.D., 2009: Responding to the challenges of climate change in the pacific islands: Management and  
25 technological imperatives. *Climate Research*, **40(2-3)**, 211-231.
- 26 Nurse, L.A., G. Sem, J.E. Hay, A.G. Suarez, P.P. Wong, S. Briguglio, and S. Ragoonaden, 2001: Small island states.  
27 In: *Climate change 2001: Impacts, adaptation and vulnerability, contribution of working group II to the third*  
28 *assessment of the intergovernmental panel on climate change*. Cambridge University Press, Cambridge, UK,  
29 pp. 843-912.
- 30 Nyström, M., N.A.J. Graham, J. Lokrantz, and A. Norström, 2008: Capturing the cornerstones of coral reef  
31 resilience: Linking theory to practice. *Coral Reefs*, **27(4)**, 795-809.
- 32 Ogston, A.S. and M.E. Field, 2010: Predictions of turbidity due to enhanced sediment resuspension resulting from  
33 sea-level rise on a fringing coral reef: Evidence from molokai, hawaii. *Journal of Coastal Research*, **26(6)**,  
34 1027-1037.
- 35 Oliver, J.K., R. Berkelmans, and C.M. Eakin, 2009: Coral bleaching in space and time. *Ecological Studies*, **205**, 21-  
36 39.
- 37 Otero, P., S. Perez, A. Alfonso, C. Vale, P. Rodriguez, N.N. Gouveia, N. Gouveia, J. Delgado, P. Vale, M. Hirama,  
38 Y. Ishihara, J. Molgo, and L.M. Botana, 2010: First toxin profile of ciguateric fish in madeira arquipelago  
39 (europe). *Analytical Chemistry*, **82(14)**, 6032-6039.
- 40 Oxenford, H.A., R. Roach, A. Brathwaite, L. Nurse, R. Goodridge, F. Hinds, K. Baldwin, and C. Finney, 2008:  
41 Quantitative observations of a major coral bleaching event in barbados, southeastern caribbean. *Climatic*  
42 *Change*, **87(3-4)**, 435-449.
- 43 Pappas, G., P. Papadimitriou, V. Siozopoulou, L. Christou, and N. Akritidis, 2008: The globalization of  
44 leptospirosis: Worldwide incidence trends. *International Journal of Infectious Diseases*, **12(4)**, 351-357.
- 45 Parham, P.E. and E. Michael, 2009: Modelling the effects of weather and climate change on malaria transmission.  
46 *Environmental Health Perspectives*, **118**, 620-626.
- 47 Park, S., N. Marshall, E. Jakku, A. Dowd, S. Howden, E. Mendham, and A. Fleming, 2012: Informing adaptation  
48 responses to climate change through theories of transformation. *Global Environmental Change*, **22(1)**, 115-126.
- 49 Parolo, G. and G. Rossi, 2008: Upward migration of vascular plants following a climate warming trend in the alps.  
50 *Basic and Applied Ecology*, **9(2)**, 100-107.
- 51 Pascual, M., J.A. Ahumada, L.F. Chaves, X. Rodo, and M. Bouma, 2006: Malaria resurgence in the east african  
52 highlands: Temperature trends revisited. *Proceedings of the National Academy of Sciences*, **103(15)**, 5829-5834.

- 1 Pauli, H., M. Gottfried, K. Reiter, C. Klettner, and G. Grabherr, 2007: Signals of range expansions and contractions  
2 of vascular plants in the high alps: Observations (1994–2004) at the GLORIA\* master site schrankogel, tyrol,  
3 austria. *Global Change Biology*, **13(1)**, 147-156.
- 4 Payet, R. and W. Agricole, 2006: Climate change in the seychelles: Implications for water and coral reefs. *Ambio*,  
5 **35(4)**, 182-189.
- 6 Peduzzi, P., H. Dao, C. Herold, and F. Mouton, 2009: Assessing global exposure and vulnerability towards natural  
7 hazards: The disaster risk index. *Natural Hazards and Earth System Sciences*, **9(4)**, 1149-1159.
- 8 Perch-Nielsen, S.L., 2010: The vulnerability of beach tourism to climate change – an index approach. *Climatic*  
9 *Change*, **100(3-4)**, 579-606.
- 10 Perry, C.T., P.S. Kench, S.G. Smithers, B. Riegl, H. Yamano, and M.J. O’Leary, 2011: Implications of reef  
11 ecosystem change for the stability and maintenance of coral reef islands. *Global Change Biology*, **17**, 3679-  
12 3696.
- 13 Petschel-Held, G., A. Block, M. Cassel-Gintz, J. Kropp, M.K.B. Lüdeke, O. Moldenhauer, F. Reusswig, and H.J.  
14 Schellnhuber, 1999: Syndromes of global change: A qualitative modelling approach to assist global  
15 environmental management. *Environmental Modeling and Assessment*, **4(4)**, 295-314.
- 16 Piskorska, M., G. Smith, and E. Weil, 2007: Bacteria associated with the coral *echinopora lamellosa* (esper 1795) in  
17 the indian ocean - zanzibar region. *African Journal of Environmental Science and Technology*, **1(5)**, 93-98.
- 18 Podesta, J. and P. Ogden, 2007: The security implications of climate change. *The Washington Quarterly*, **31(1)**, 115-  
19 138.
- 20 Polidoro, B.A., K.E. Carpenter, L. Collins, N.C. Duke, A.M. Ellison, J.C. Ellison, E.J. Farnsworth, E.S. Fernando,  
21 K. Kathiresan, N.E. Koedam, S.R. Livingstone, T. Miyagi, G.E. Moore, V.N. Nam, J.E. Ong, J.H. Primavera,  
22 S.G. Salmo, J.C. Sanciangco, S. Sukardjo, Y. Wang, and J.W.H. Yong, 2010: The loss of species: Mangrove  
23 extinction risk and geographic areas of global concern. *PLoS One*, **5(4)**, doi:  
24 10.1371/journal.pone.0010095PMCID: PMC2851656.
- 25 Praene, J.P., M. David, F. Sinama, D. Morau, and O. Marc, 2012: Renewable energy: Progressing towards a net zero  
26 energy island, the case of reunion island. *Renewable and Sustainable Energy Reviews*, **16(1)**, 426-442.
- 27 Pratchett, M.S., S.K. Wilson, A.J. Graham, P.L. Munday, G.P. Jones, and N.V.C. Polunin, 2009: Coral bleaching  
28 and consequences for motile reef organisms: Past, present and uncertain future effects. *Ecological Studies.*, **205**,  
29 139-158.
- 30 Prescott-Allen, R., 2001: *The wellbeing of nations: A country-by-country index of quality of life and the*  
31 *environment*. Island Press, Washington, DC, .
- 32 Prospero, J.M., 2006: Case study:Saharan dust impacts and climate change. *Oceanography*, **19(2)**, 59-61.
- 33 Prospero, J.M., E. Blades, G. Mathison, and R. Naidu, 2005: Interhemispheric transport of viable fungi and bacteria  
34 from africa to the caribbean with soil dust. *Aerobiologia*, **21(1)**, 1-19.
- 35 Prospero, J.M. and P.J. Lamb, 2003: African droughts and dust transport to the caribbean: Climate change  
36 implications. *Science*, **302(5647)**, 1024-1027.
- 37 Prospero, J., E. Blades, R. Naidu, G. Mathison, H. Thani, and M. Lavoie, 2008: Relationship between african dust  
38 carried in the atlantic trade winds and surges in pediatric asthma attendances in the caribbean. *International*  
39 *Journal of Biometeorology*, **52(8)**, 823-832.
- 40 Ralph, P.J., M.J. Durako, S. Enriquez, C.J. Collier, and M.A. Doblin, 2007: Impact of light limitation on seagrasses.  
41 *Journal of Experimental Marine Biology and Ecology*, **350(1-2)**, 176-193.
- 42 Ranger, N., K. Gohar, J.A. Lowe, S.C.B. Raper, A. Bowen, and R.E. Ward, 2012: Is it possible to limit global  
43 warming to no more than 1.5°C? *Climatic Change*, **111**, 973-981.
- 44 Rankey, E.C., 2011: Nature and stability of atoll island shorelines: Gilbert island chain, kiribati, equatorial pacific.  
45 *Sedimentology*, DOI: **10.1111/j.1365-3091.2011.01241.x**, 1859.
- 46 Rasmussen, K., W. May, T. Birk, M. Matakai, and O. Mertz, 2011: Prospects for climate change on three polynesian  
47 outliers in solomon islands: Exposure, sensitivity and adaptive capacity. *Geografisk Tidsskrift-Danish Journal*  
48 *of Geography*, **111(1)**, 43-57.
- 49 Rasmussen, K., W. May, T. Birk, M. Matakai, O. Mertz, and D. Yee, 2009: Climate change on three polynesian  
50 outliers in the solomon islands: Impacts, vulnerability and adaptation. *Geografisk Tidsskrift – Danish Journal of*  
51 *Geography*, **109(1)**, 1-13.
- 52 Rawlins, S.C., A. Hinds, and J.M. Rawlins, 2008: Malaria and its vectors in the caribbean: The continuing challenge  
53 of the disease forty-five years after eradication from the islands. *West Indian Medical Journal*, **57(5)**, 462-469.

- 1 Read, R., 2010: Trade, economic vulnerability, resilience and the implications of climate change on small island and  
2 littoral developing economies. In: *Programme on competitiveness and sustainable development*. [International  
3 Centre for Trade and Sustainable Development (ICTSD) (ed.)]. International Centre for Trade and Sustainable  
4 Development, Geneva, Switzerland, pp. 35.
- 5 Reaser, J.K., L.A. Meyerson, Q. Cronk, M. De Poorter, L.G. Eldrege, E. Green, M. Kairo, P. Latasi, R.N. Mack, J.  
6 Mauremootoo, D. O'Dowd, W. Orapa, S. Sastroutomo, A. Saunders, C. Shine, S. Thrainsson, and L. Vaiutu,  
7 2007: Ecological and socioeconomic impacts of invasive alien species in island ecosystems. *Environmental*  
8 *Conservation*, **34(02)**, 98-111.
- 9 Reenberg, A., T. Birch-Thomsen, O. Mertz, B. Fog, and S. Christiansen, 2008: Adaptation of human coping  
10 strategies in a small island society in the SW pacific-50 years of change in the coupled human-environment  
11 system on bellona, solomon islands. *Human Ecology*, **36(6)**, 807-819.
- 12 Rocha, S., I. Ineich, and J. Harris, 2009: Cryptic variation and recent bipolar range expansion within the stumped-  
13 toed gecko *gehyra mutilata* across indian and pacific ocean islands. *Contributions to Zoology*, **78(1)**, 1-8.
- 14 Rogers, T., K. Chmutina, and L.L. Moseley, 2012: The potential of PV installations in SIDS—an example in the  
15 island of barbados. *Management of Environmental Quality: An International Journal*, **23(3)**, 284-290.
- 16 Rongo, T. and R. van Woesik, 2011: Ciguatera poisoning in rarotonga, southern cook islands. *Harmful Algae*, **10(4)**,  
17 345-355.
- 18 Rosenberg, E. and A. Kushmaro, 2011: Microbial diseases of corals: Pathology and ecology. In: *Coral reefs: An*  
19 *ecosystem in transition*. [Dubinsky, Z. and N. Stambler(eds.)]. Springer Netherlands, Dordrecht; Heidelberg;  
20 London; New York, pp. 451-464.
- 21 Rosenberg, E., A. Kushmaro, E. Kramarsky-Winter, E. Banin, and L. Yossi, 2008: The role of microorganisms in  
22 coral bleaching. *The ISME Journal*, **3(2)**, 139-146.
- 23 Rosenzweig, C. and T.J. Wilbanks, 2010: The state of climate change vulnerability, impacts, and adaptation  
24 research: Strengthening knowledge base and community. *Climatic Change*, **100(1)**, 103-106.
- 25 Ross, M.S., J.J. O'Brien, R.G. Ford, K. Zhang, and A. Morkill, 2009: Disturbance and the rising tide: The challenge  
26 of biodiversity management on low-island ecosystems. *Frontiers in Ecology and the Environment*, **7**, 471-478.
- 27 Rotjan, R. and S. Lewis, 2008: Impact of coral predators on tropical reefs. *Marine Ecology Progress Series*, **367**, 73-  
28 91.
- 29 Rozell, D.J. and Wong T.F., 2010: Effects of climate change on groundwater resources at shelter island, new york  
30 state, USA. *Hydrogeology Journal*, **18**, 1657-1665.
- 31 Russell, L., 2009: Poverty, Climate Change and Health in Pacific Island Countries, Menzies Centre for Health  
32 Policy, Sydney and Canberra, 55 pp.
- 33 Sanò, M., M. Marchand, and R. Medina, 2010: Coastal setbacks for the mediterranean: A challenge for ICZM.  
34 *Journal of Coastal Conservation*, **14(4)**, 295-301.
- 35 Santese, M., M.R. Perrone, A.S. Zakey, F. De Tomasi, and F. Giorgi, 2010: Modeling of saharan dust outbreaks  
36 over the mediterranean by RegCM3: Case studies. *Atmospheric Chemistry and Physics Discussions*, **10(1)**, 133-  
37 156.
- 38 Sax, D.F. and S.D. Gaines, 2008: Species invasions and extinction: The future of native biodiversity on islands.  
39 *Proceedings of the National Academy of Sciences*, **105**, 11490-11497.
- 40 Schipper, L. and M. Pelling, 2006: Disaster risk, climate change and international development: Scope for, and  
41 challenges to, integration. *Disasters (Special Issue on Climate Change and Disasters)*, **30(1)**, 19-38.
- 42 Schlepupner, C., 2008: Evaluation of coastal squeeze and its consequences for the caribbean island martinique. *Ocean*  
43 *& Coastal Management*, **51(5)**, 383-390.
- 44 Schwarz, A., C. Béné, G. Bennett, D. Boso, Z. Hilly, C. Paul, R. Posala, S. Sibiti, and N. Andrew, 2011:  
45 Vulnerability and resilience of remote rural communities to shocks and global changes: Empirical analysis from  
46 solomon islands. *Global Environmental Change*, **21(3)**, 1128-1140.
- 47 Sekercioglu, C.H., S.H. Schneider, J.P. Fay, and S.R. Loarie, 2008: Climate change, elevational range shifts, and  
48 bird extinctions. *Conservation Biology*, **22(1)**, 140-150.
- 49 Senapathi, D., M.A.C. Nicoll, C. Teplitsky, C.G. Jones, and K. Norris, 2011: Climate change and the risks  
50 associated with delayed breeding in a tropical wild bird population. *Proceedings of the Royal Society B:*  
51 *Biological Sciences*, **278(1722)**, 3184-3190.
- 52 Sheppard, C., D.J. Dixon, M. Gourlay, A. Sheppard, and R. Payet, 2005: Coral mortality increases wave energy  
53 reaching shores protected by reef flats: Examples from the seychelles. *Estuarine, Coastal and Shelf Science*,  
54 **64(2-3)**, 223-234.

- 1 Smit, B., I. Burton, R.J.T. Klein, and J. Wandel, 2000: An anatomy of adaptation to climate change and variability.  
2 *Climatic Change*, **45(1)**, 223-251.
- 3 Smith, R., J. Henderson, V. Chong, C. Tay, and Y. Jingwen, 2011: The development and management of beach  
4 resorts: Boracay island, the philippines. *Asia Pacific Journal of Tourism Research*, **16(2)**, 229-245.
- 5 South Pacific Sea Level and Climate Monitoring Project, 2011: SPSLCMP Sea Level Data Summary Report: Jul10–  
6 Jun11. National Tidal Centre, Australian Bureau of Meteorology., Melbourne, .
- 7 Spennemann, D.H.R., 1996: Nontraditional settlement patterns and typhoon hazard on contemporary majuro atoll,  
8 republic of marshall islands. *Environmental Management*, **20(3)**, 337-348.
- 9 Srinivasan, U.T., 2010: Economics of climate change: Risk and responsibility by world region. *Climate Policy*,  
10 **10(3)**, 298-316.
- 11 Steinberger, J.K., J. van Niel, and D. Bourg, 2009: Profiting from negawatts: Reducing absolute consumption and  
12 emissions through a performance-based energy economy. *Energy Policy*, **37(1)**, 361-370.
- 13 Stephenson, T.S., A.A. Chen, and M.A. Taylor, 2008: Toward the development of prediction models for the primary  
14 caribbean dry season. *Theoretical and Applied Climatology*, **92**, 87-101.
- 15 Stokes, M.D., J.J. Leichter, and S.J. Genovese, 2010: Long-term declines in coral cover at bonaire, netherlands  
16 antilles. *Atoll Research Bulletin*, (**582**).
- 17 Storey, D. and S. Hunter, 2010: Kiribati: An environmental 'perfect storm'. *Australian Geographer*, **41(2)**, 167-181.
- 18 Stuart, E.K., 2006: Energizing the island community: A review of policy standpoints for energy in small island  
19 states and territories. *Sustainable Development*, **14(2)**, 139-147.
- 20 Sutherland, M., P. Dare, and K. Miller, 2008: Monitoring sea-level change in the caribbean. *Geomática*, **64(4)**, 428-  
21 436.
- 22 Swart, R. and F. Raes, 2007: Making integration of adaptation and mitigation work: Mainstreaming into sustainable  
23 development policies. *Climate Policy*, **7(4)**, 288-303.
- 24 Takasaki, Y., 2011: Do the commons help augment mutual insurance among the poor? *World Development*, **39(3)**,  
25 429-438.
- 26 Tanzil, J.T.I., B.E. Brown, and A.W. Tudhope, 2009: Decline in skeletal growth of the coral *porites lutea* from the  
27 andaman sea, south thailand between 1984 and 2005. *Coral Reefs.*, **28(2)**, 519-528.
- 28 Taylor, M.A., A. Centella, J. Charlery, A. Borrajero, A. Bezanilla, J. Campbell, R. Rivero, T.S. Stephenson, F.  
29 Whyte, and R. Watson, 2007: Glimpses of the Future: A Briefing from the PRECIS Caribbean Climate Change  
30 Project. Caribbean Community Climate Change Centre, Belmopan, Belize, 101-25 pp.
- 31 Taylor, M.A., A. Centella, J. Charlery, I. Borrajero, A. Benzanilla, J. Campbell, R. Rivero, T.S. Stephenson, F.  
32 Whyte, and R. Watson, 2007: Glimpses of the Future: A Briefing from the PRECIS Caribbean Climate Change  
33 Project. Caribbean Community Climate Change Centre, Belmopan, Belize, 1-24 pp.
- 34 Taylor, M.A., F.S. Whyte, T.S. Stephenson, and J.D. Campbell, 2012: Why dry? investigating the future evolution  
35 of the caribbean low level jet to explain projected caribbean drying *International Journal of Climatology*, , DOI:  
36 10.1002/joc.3461.
- 37 Tegart, W.J.M., G.W. Sheldon, and D.C. Griffiths, 1990: Executive summary. In: *Climate change: The IPCC*  
38 *impacts assessment. contribution of working group II to the first assessment report of the intergovernmental*  
39 *panel on climate change*. [Tegart, W.J.M., G.W. Sheldon, and D.C. Griffiths(eds.)]. Australian Government  
40 Publishing Service, Canberra, Australia, pp. 1-5.
- 41 Terry, J.P. and A.C. Falkland, 2010: Responses of atoll freshwater lenses to storm-surge overwash in the northern  
42 cook islands. *Hydrogeology Journal*, **18(3)**, 749-759.
- 43 Tester, P.A., R.L. Feldman, A.W. Nau, S.R. Kibler, and R. Wayne Litaker, 2010: Ciguatera fish poisoning and sea  
44 surface temperatures in the caribbean sea and the west indies. *Toxicon*, **56(5)**, 698-710.
- 45 Thiengo, S.C., A. Maldonado, E.M. Mota, E.J.L. Torres, R. Caldeira, O.S. Carvalho, A.P.M. Oliveira, R.O. Simoes,  
46 M.A. Fernandez, and R.M. Lanfredi, 2010: The giant african snail *achatina fulica* as natural intermediate host  
47 of *angiostrongylus cantonensis* in pernambuco, northeast brazil. *Acta Tropica*, **115(3)**, 194-199.
- 48 Thomas, A. and R. Leichenko, 2011: Adaptation through insurance: Lessons from the NFIP. *International Journal*  
49 *of Climate Change Strategies and Management*, **3(3)**, 250-263.
- 50 Thomas-Hope, E. and A. Jardine-Comrie, 2007: Valuation of environmental resources for tourism in small island  
51 developing states: Implications for planning in jamaica. *International Development Planning Review*, **29(1)**, 93-  
52 112.

- 1 Thornton, P.K., P.G. Jones, P.J. Ericksen, and A.J. Challinor, 2011: Agriculture and food systems in sub-saharan  
2 africa in a 4 C world. *Philosophical Transactions of the Royal Society A: Mathematical, Physical and*  
3 *Engineering Sciences*, **369(1934)**, 117-136.
- 4 Tompkins, E.L., L. Hurlston, and W. Poortinga, 2009: Foreignness as a constraint on learning: The impact of  
5 migrants on disaster resilience in small islands. *Environmental Hazards*, **8**, 263-277.
- 6 Tompkins, E.L., M.C. Lemos, and E. Boyd, 2008: A less disastrous disaster: Managing response to climate-driven  
7 hazards in the cayman islands and NE brazil. *Global Environmental Change-Human and Policy Dimensions*,  
8 **18(4)**, 736-745.
- 9 Tompkins, E.L., W.N. Adger, E. Boyd, S. Nicholson-Cole, K. Weatherhead, and N. Arnell, 2010: Observed  
10 adaptation to climate change: UK evidence of transition to a well-adapting society. *Global Environmental*  
11 *Change*, **20(4)**, 627-635.
- 12 Tompkins, E.L., K. Brown, and R. Few, 2008: Scenario-based stakeholder engagement: A framework for  
13 incorporating climate change into coastal decision making. *Journal of Environmental Management*, **88**, 1580-  
14 1592.
- 15 Tsyban, A., J.T. Everett, and J. Titus, 1990: World oceans and coastal zones. In: *Climate change: The IPCC impacts*  
16 *assessment*. [McG. Tegart, W.J., G.W. Sheldon, and D.C. Griffiths(eds.)]. Australian Government Publishing  
17 Service, Canberra, pp. 6.1-6.28.
- 18 UNDP, 2011: Human Development Report 2011 - Sustainability and Equity: A Better Future for all, United Nations  
19 Development Programme, New York, NY, USA, .
- 20 United Nations Conference on Trade and Development (UNCTAD), 1997: The Vulnerability of Small Island  
21 Developing States in the Context of Globalization: Common Issues and Remedies. Discussion Paper Prepared  
22 by the United Nations Conference on Trade and Development, United Nations Conference on Trade and  
23 Development (UNCTAD), Geneva, .
- 24 Uno, I., K. Eguchi, K. Yumimoto, T. Takemura, A. Shimizu, M. Uematsu, Z. Liu, Z. Wang, Y. Hara, and N.  
25 Sugimoto, 2009: Asian dust transported one full circuit around the globe. *Nature Geoscience*, **2**, 557-560.
- 26 Uyarra, M.C., I.M. Cote, J.A. Gill, R.R.T. Tinch, D. Viner, and A.R. Watkinson, 2005: Island-specific preferences  
27 of tourists for environmental features: Implications of climate change for tourism-dependent states.  
28 *Environmental Conservation*, **32(1)**, 11-19.
- 29 Van Aalst, M.K., T. Cannon, and I. Burton, 2008: Community level adaptation to climate change: The potential role  
30 of participatory community risk assessment. *Global Environmental Change*, **18(1)**, 165-179.
- 31 van Alphen, K., W. van Sark, and M.P. Hekkert, 2007: Renewable energy technologies in the maldives -  
32 determining the potential. *Renewable & Sustainable Energy Reviews*, **11(8)**, 1650-1674.
- 33 van der Werf, G.R., D.C. Morton, R.S. DeFries, J.G. Olivier, P.S. Kasibhatla, R.B. Jackson, G.J. Collatz, and J.T.  
34 Randrsn, 2009: CO<sub>2</sub> emissions from forest loss. *Nature Geoscience*, **2**, 737-738.
- 35 van Ledden, M., G. Vaughn, J. Larsen, F. Wiersma, and M. Amsterdam, 2009: Extreme wave event along the  
36 guyana coastline in october 2005. *Continental Shelf Research*, **29(1)**, 352-361.
- 37 Van Nostrand, J.M. and J.G. Nevius, 2011: Parametric insurance: Using objective measures to address the impacts  
38 of natural disasters and climate change. *Environmental Claims Journal*, **23(3-4)**, 227-237.
- 39 van Vuuren D.P., J. Edmonds, M. Kainuma, K. Riahi, A. Thomson, K. Hibbard, G.C. Hurtt, T. Kram, V. Krey, J.  
40 Lamarque, T.M. Masui, M. Meinshausen, N. Nakicenovic, S.J. Smith, and S.K. Rose, 2010: The representative  
41 concentration pathways: An overview. *Climatic Change*, **109**, 5-31.
- 42 van Vuuren, D.P., M. Isaac, Z.W. Kundzewicz, N. Arnell, T. Barker, P. Criqui, F. Berkhout, H. Hilderink, J. Hinkel,  
43 A. Hof, A. Kitous, T. Kram, R. Mechler, and S. Scriciu, 2011: The use of scenarios as the basis for combined  
44 assessment of climate change mitigation and adaptation. *Global Environmental Change*, **21(2)**, 575-591.
- 45 Vassie, J.M., P.L. Woodworth, and M.W. Holt, 2004: An example of north atlantic deep-ocean swell impacting  
46 ascension and st. helena islands in the central south atlantic. *Journal of Atmospheric and Oceanic Technology*,  
47 **21(7)**, 1095-1103.
- 48 Veron, J.E.N., O. Hoegh-Guldberg, T.M. Lenton, J.M. Lough, D.Q. Obura, P. Pearce-Kelly, C.R.C. Sheppard, M.  
49 Spalding, M.G. Stafford-Smith, and A.D. Rogers, 2009: The coral reef crisis: The critical importance of <350  
50 ppm CO<sub>2</sub>. *Marine Pollution Bulletin*, **58(10)**, 1428-1436.
- 51 Warrick, O., 2009: Ethics and methods in research for community-based adaptation: Reflections from rural vanuatu.  
52 *Participatory Learning and Action*, **60**, 76-87.
- 53 Waycott, M., L.J. McKenzie, J.E. Mellors, J.C. Ellison, M.T. Sheaves, C. Collier, A.M. Schwarz, A. Webb, J.E.  
54 Johnson, and C.E. Payri, 2011: Vulnerability of mangroves, seagrasses and intertidal flats in the tropical pacific

- 1 to climate change. In: *Vulnerability of tropical pacific fisheries and aquaculture to climate change*. [Bell, D.,  
2 J.E. Johnson, and J.A. Hobday(eds.)]. Secretariat of the Pacific Community, Noumea, New Caledonia., .  
3 Waycott, M., C.M. Duarte, T.J.B. Carruthers, R.J. Orth, W.C. Dennison, S. Olyarnik, A. Calladine, J.W.  
4 Fourqurean, K.L. Heck, A.R. Hughes, G.A. Kendrick, W.J. Kenworthy, F.T. Short, and S.L. Williams, 2009:  
5 Accelerating loss of seagrasses across the globe threatens coastal ecosystems. *Proceedings of the National*  
6 *Academy of Sciences*, **106(30)**, 12377-12381.
- 7 Webb, A.P., 2006: *SOPAC Technical Report Report ER53*. Analysis of Coastal Change and Erosion – Tebunginako  
8 Village, Abaiang, Kiribati. SOPAC, Suva, Fiji, .
- 9 Webb, A.P., 2007: *SOPAC Technical Report ER 75*. Assessment of Salinity of Groundwater in Swamp Taro  
10 (*Cyrtosperma Chamissonis*) “pulaka” Pits in Tuvalu, SOPAC, Suva Fiji, .
- 11 Webb, N., S. Coulson, I. Hodkinson, W. Block, J. BalE, and A. Strathdee, 1998: The effects of experimental  
12 temperature elevation on populations of cryptostigmatic mites in high arctic soils *Pedobiologia*, **42**, 298-308.
- 13 Webb, A.P., and P.S. Kench, 2010: The dynamic response of reef islands to sea-level rise: Evidence from multi-  
14 decadal analysis of island change in the central pacific. *Global and Planetary Change*, **72(3)**, 234-246.
- 15 Weil, E. and A. Cróquer, 2009: Spatial variability in distribution and prevalence of caribbean scleractinian coral and  
16 octocoral diseases. I. community-level analysis. *Diseases of Aquatic Organisms*, **83(3)**, 195-208.
- 17 Weil, E. and C.S. Rogers, 2011: Coral reef diseases in the atlantic-caribbean. In: *Coral reefs: An ecosystem in*  
18 *transition*. [Dubinsky, Z. and N. Stambler(eds.)]. Springer Netherlands, Dordrecht; Heidelberg; London; New  
19 York, pp. 465-491-491.
- 20 Westphal, M., M. Browne, K. MacKinnon, and I. Noble, 2008: The link between international trade and the global  
21 distribution of invasive alien species. *Biological Invasions*, **10(4)**, 391-398.
- 22 White, I., T. Falkland, P. Perez, A. Dray, T. Metutera, E. Metai, and M. Overmars, 2007: Challenges in freshwater  
23 management in low coral atolls. *Journal of Cleaner Production*, **15**, 1522-1528.
- 24 White, I. and T. Falkland, 2010: Management of freshwater lenses in small pacific islands. *Hydrogeology Journal*,  
25 **18(1)**, 227-246.
- 26 White, I., T. Falkland, T. Metutera, E. Metai, M. Overmars, P. Perez, and A. Dray, 2007: Climatic and human  
27 influences on groundwater in low atolls. *Vadose Zone Journal*, **6(3)**, 581-590.
- 28 Whyte, F.S., M.A. Taylor, T.S. Stephenson, and J.D. Campbell, 2008: Features of the caribbean low level jet.  
29 *International Journal of Climatology*, **28**, 119-128.
- 30 Williams, G.J., I.S. Knapp, J.E. Maragos, and S.K. Davy, 2010: Modelling patterns of coral bleaching at a remote  
31 pacific atoll. *Marine Pollution Bulletin*, **60**, 1467-1476.
- 32 Woodroffe, C.D., 2008: Reef-island topography and the vulnerability of atolls to sea-level rise. *Global and*  
33 *Planetary Change*, **62**, 77-96.
- 34 World Tourism Organisation and United Nations Environment Programme, 2008: *Climate change and tourism:*  
35 *Responding to global challenges*. World Tourism Organization and the United Nations Environment  
36 Programme, Madrid, Spain; Paris, France, pp. 256.
- 37 Yamano, H., H. Kayanne, T. Yamaguchi, Y. Kuwhara, H. Yokoki, H. Shimazaki, and M. Chicamori, 2007: Atoll  
38 island vulnerability to flooding and inundation revealed by historical reconstruction: Fongafale island, funafuti  
39 atoll, tuvalu. *Global and Planetary Change*, **57(3-4)**, 407-416.
- 40

Table 29-1: Small islands' regions temperature and precipitation change projections for the SRES A1B scenario over the period 1980-1999 compared to 2080-2099. The table shows the minimum, median (50%) and maximum values of the mean temperature and precipitation responses from each of the 21 AR4 global models (Adapted from Table 11.1 in AR4 WG1).

Small Island Region	Season (by month)	Temperature Change (°C)			Precipitation Change (%)		
		min	median	max	min	median	max
Caribbean	DJF	1.4	2.1	3.2	-21	-6	10
	MAM	1.3	2.2	3.2	-28	-13	6
	JJA	1.3	2.0	3.2	-57	-20	8
	SON	1.6	2.0	3.4	-38	-6	19
	<b>ANNUAL</b>	1.4	<b>2.0</b>	3.2	-39	<b>-12</b>	11
Indian Ocean	DJF	1.4	2.1	3.8	-4	4	20
	MAM	1.5	2.2	3.8	0	5	20
	JJA	1.4	2.1	3.7	-3	3	20
	SON	1.4	2.0	3.6	-5	4	21
	<b>ANNUAL</b>	1.4	<b>2.1</b>	3.7	-2	<b>4</b>	20
North Pacific	DJF	1.5	2.4	3.6	-5	3	17
	MAM	1.4	2.3	3.5	-17	1	17
	JJA	1.4	2.3	3.9	1	8	25
	SON	1.6	2.4	3.9	1	6	22
	<b>ANNUAL</b>	1.5	<b>2.3</b>	3.7	0	<b>5</b>	19
South Pacific	DJF	1.4	1.8	3.2	-6	4	15
	MAM	1.4	1.9	3.2	-3	6	17
	JJA	1.4	1.8	3.1	-2	3	12
	SON	1.4	1.8	3.0	-8	2	5
	<b>ANNUAL</b>	1.4	<b>1.8</b>	3.1	-4	<b>3</b>	11

Table 29-2: Projected percentage change in key marine natural habitat or resources in 22 tropical Pacific small islands under the SRES B1 and A2 scenarios (adapted from Bell et al., 2011).

Natural Resource	2100	
	B1	A2
Mangroves	-50 to -70%	-6 to -80%
Seagrass	-5 to -35%	-10 to -50%
Coral cover	10 to 20%	<2%
Coastal fish	-20%	-20 to -50%
Skipjack tuna	+12%	-7%
Bigeye tuna	-9%	-27%



Table 29-3: Examples of syndromes affecting islands' vulnerability to climate change.

<i>Name of syndrome</i>	<i>Description</i>	<i>Example</i>	<i>Source</i>
Mass Tourism	Environmental destruction for recreational ends	Air quality, and waste problems from tourism in Boracay, Philippines	(Smith et al., 2011)
Waste Dumping	Environmental degradation through (un) controlled disposal of waste	No segregation of waste, and limited waste reduction e.g. recycling /composting in Mauritius	(Foolmaun et al., 2011)
Over-exploitation	Overuse or overexploitation of natural ecosystems	Overfishing of marine resources in Jamaica	(Carr and Heyman, 2009)
Coastal Squeeze	Environmental degradation as environmental stresses force ecosystem retreat to abut coastal infrastructure	Proximity of tourism infrastructure to the Martinique coast prevents coastal ecosystems from migrating	(Schleupner, 2008)

Table 29-4: Economic structure of small islands and areas of potential emissions reduction.

<i>Type of economy</i>	<i>Sectors with significant emissions reduction potential</i>						
	Energy supply	Transport	Buildings (commercial /residential)	Industry	Agriculture	Forestry	Waste management and sewage
Aid dependent	X	X	X	X	?	?	X
Services dependent	√	?	√	X	?	X	√
Natural resource exporting	?	X	√	?	√	√	?
Diversified with manufacturing	√	?	√	√	?	?	?

## Notes:

X = low potential for emissions reduction due to excessive cost or limited effectiveness

? = possible area for emissions reduction, although may depend on capacities within the islands

√ = rich area for exploring emissions reduction

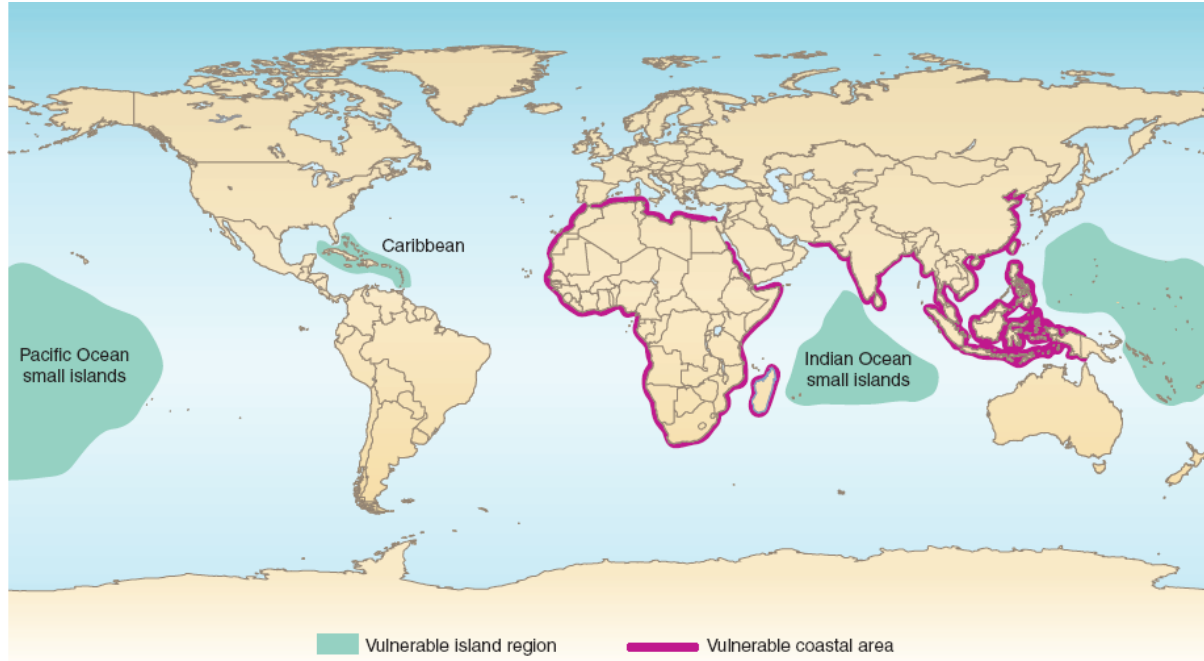


Figure 29-1: Small island regions vulnerable to coastal flooding caused by future relative or climate-induced sea-level rise. At highest risk are coastal zones with dense populations, low elevations, appreciable rates of subsidence, and/or inadequate adaptive capacity (Nicholls and Cazenave, 2010).

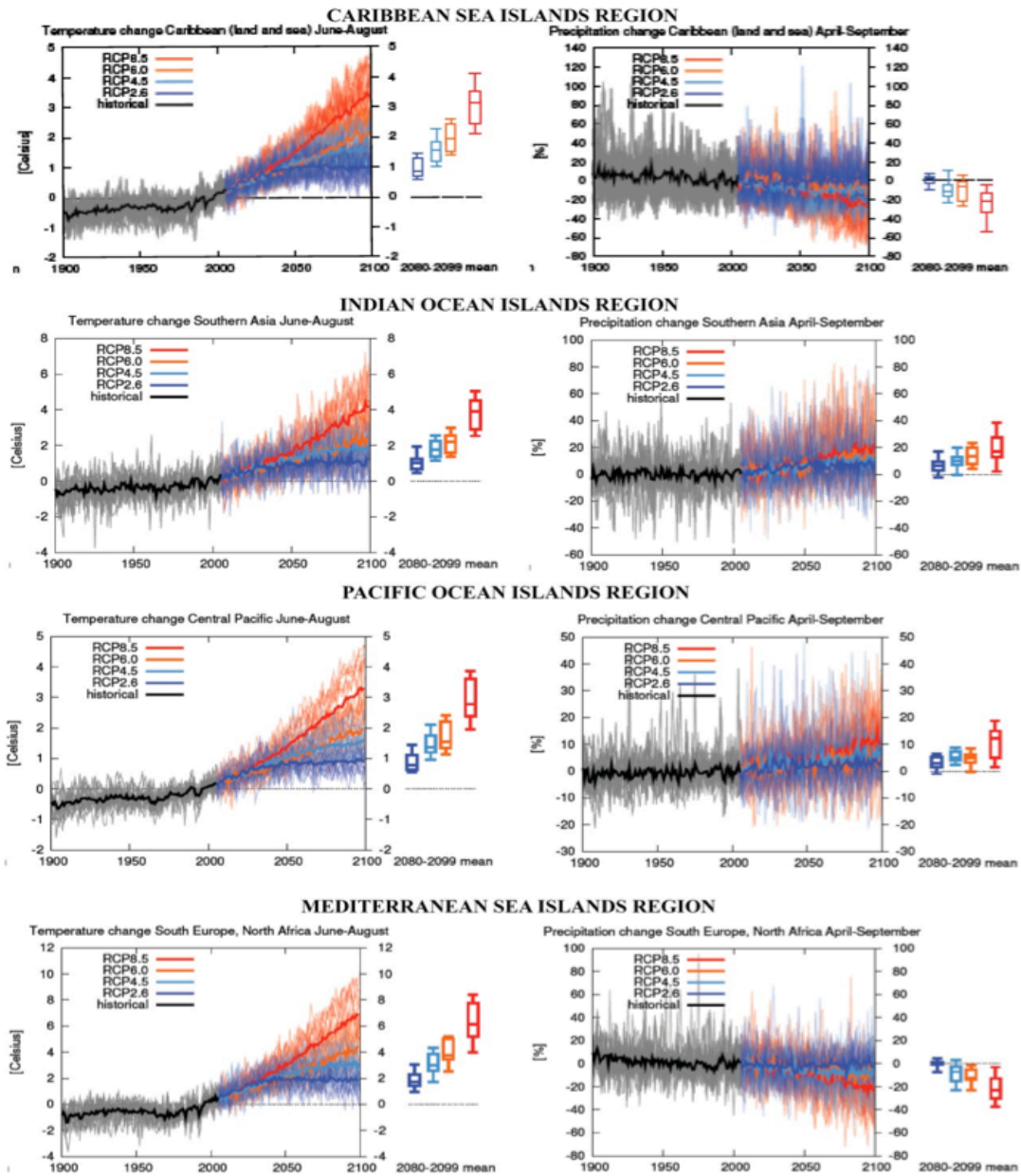


Figure 29-2: RCP Scenario projections to the year 2100 for the four main small island regions (Adapted from AR5 WG1, Annex 1).

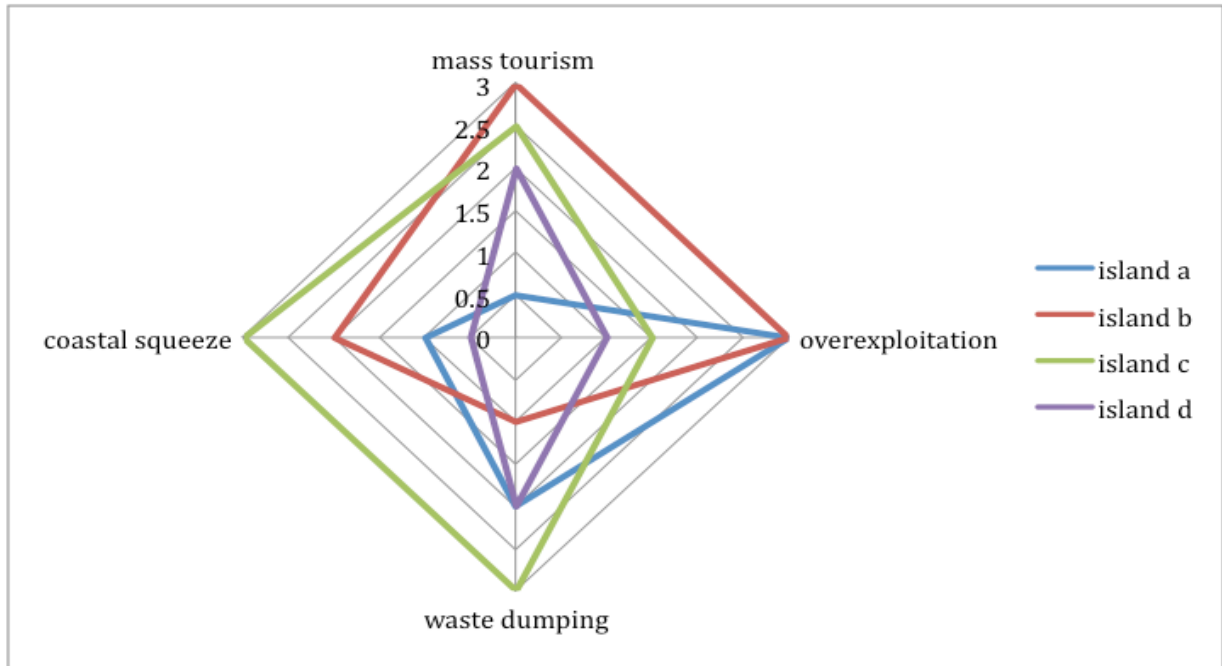


Figure 29-3: Multiple pressures on islands exacerbating island vulnerability to climate change.